

## Original Article

## Surgical Outcomes in a Lung Cancer–Screening Program Using Low Dose Computed Tomography



M. Mesa-Guzmán<sup>a,\*</sup>, J. González<sup>b</sup>, A.B. Alcaide<sup>b</sup>, J. Bertó<sup>b</sup>, J.P. de-Torres<sup>b</sup>, A. Campo<sup>b</sup>, L.M. Seijo<sup>c,j</sup>, M.M. Ocón<sup>b</sup>, J.C. Pueyo<sup>d</sup>, G. Bastarrika<sup>d</sup>, M.D. Lozano<sup>e,h,i</sup>, R. Pío<sup>f,g,h,i</sup>, L.M. Montuenga<sup>f,h,i</sup>, M. García-Granero<sup>g</sup>, J. Zulueta<sup>b,h,i</sup>

<sup>a</sup> Departamento de Cirugía Torácica, Clínica Universidad de Navarra, Pamplona, Spain

<sup>b</sup> Departamento de Neumología, Clínica Universidad de Navarra, Pamplona, Spain

<sup>c</sup> Departamento de Neumología, Clínica Universidad de Navarra, Madrid, Spain

<sup>d</sup> Departamento de Radiología, Clínica Universidad de Navarra, Pamplona, Spain

<sup>e</sup> Departamento de Anatomía Patológica, Clínica Universidad de Navarra, Pamplona, Spain

<sup>f</sup> Centro de Investigación de Medicina Aplicada – CIMA, Universidad de Navarra, Pamplona, Spain

<sup>g</sup> Departamento de Bioquímica y Genética, Universidad de Navarra, Pamplona, Spain

<sup>h</sup> Centro de Investigación Biomédica en Red de Cáncer (CIBERONC), Madrid, Spain

<sup>i</sup> Instituto de Investigación Sanitaria de Navarra (IdiSNA), Pamplona, Spain

<sup>j</sup> Centro de Investigación Biomédica en Red de Enfermedades Respiratorias (CIBERES), Madrid, Spain

## ARTICLE INFO

## Article history:

Received 25 January 2020

Accepted 21 March 2020

## Keywords:

Lung cancer

Screening

Surgery

Survival

Low-dose CT

P-IELCAP

## ABSTRACT

**Objective:** Lung cancer (LC) is the leading cause of death from cancer worldwide. More than 27,000 LCs are diagnosed annually in Spain, and most are unresectable. Early detection and treatment reduce LC mortality. This study describes surgical outcomes in a longstanding LC screening cohort in Spain.

**Methods:** We conducted a retrospective study of surgical outcomes in a LC screening (LCS) program using low dose computed tomography (LDCT) since the year 2000. A descriptive analysis of clinical and radiological parameters, presence or absence of a preoperative diagnosis, pathological staging, morbidity, mortality, and survival was performed.

**Results:** Ninety-seven (2.5%) LC were diagnosed in 3825 screened. Twenty individuals with LC had no surgery due to advanced stage or small cell histology. Eighty-seven surgical procedures were carried out for suspected or biopsy proven LC, detected by LDCT. Most operated patients were male (57[85%]) aged 64 ± 9.1 years. Nine patients underwent a second operation for a metachronous primary lung cancer. Mean tumor size was 15.2 ± 7.6 mm. Eight nodules were benign (9.2%). Lobectomy was performed in 56 cases (83.6%). Adenocarcinoma ( $n = 39$ ; 58.2%) was the most frequent histological type followed by squamous cell carcinoma ( $n = 17$ ; 25.4%). Fifty-nine (88%) tumors were in Stage I. Thirteen patients (15.4%) had 16 complications. The estimated survival rates at 5 and 10 years for stage I were 93% (95% CI: 79%–98%) and 83% (95% CI: 65%–92%), respectively.

**Conclusion:** Lung cancer screening was associated with excellent surgical outcomes with 5 and 10-year survival rates exceeding 90 and 80%, respectively.

© 2020 SEPAR. Published by Elsevier España, S.L.U. All rights reserved.

**Abbreviations:** LC, lung cancer; LCS, lung cancer screening; LDCT, low dose computed tomography; I-ELCAP, International Early Lung Cancer Action Program; NLST, National Lung Cancer Screening Trial; NELSON, Nederlands-Leuven Longkanker Screenings Onderzoek; P-ELCAP, Pamplona Early Lung Cancer Action Program; EBUS, endobronchial ultrasound; EUS, endoscopic ultrasound; COPD, chronic obstructive pulmonary disease; MLND, mediastinal lymph node dissection; MLNS, mediastinal lymph node sampling; SBRT, Stereotactic Body Radiation Therapy; FNAC, fine needle aspiration cytology; VATS, video-assisted thoracoscopic surgery; RATS, robotic-assisted thoracic surgery; CI, confidence interval; SD, standard deviation.

\* Corresponding author.

E-mail address: [mmesag@unav.es](mailto:mmesag@unav.es) (M. Mesa-Guzmán).

## Resultados quirúrgicos de un programa de cribado de cáncer de pulmón utilizando tomografía computarizada de baja dosis

### R E S U M E N

#### Palabras clave:

Cáncer de pulmón  
Cribado  
Cirugía  
Supervivencia  
Tomografía computarizada de baja dosis  
P-IELCAP

**Objetivo:** El cáncer de pulmón (CP) es la principal causa de muerte por cáncer en todo el mundo. En España se diagnostican anualmente más de 27.000 CP y la mayoría son irsecables. La detección y el tratamiento tempranos reducen la mortalidad por CP. Este estudio describe los resultados quirúrgicos en una cohorte de cribado de CP de larga duración en España.

**Métodos:** Llevamos a cabo un estudio retrospectivo de los resultados quirúrgicos de un programa de cribado de CP (CCP) usando tomografía computarizada de baja dosis (LDCT, por sus siglas en inglés) en marcha desde el año 2000. Se realizó un análisis descriptivo de los parámetros clínicos y radiológicos, presencia o ausencia de un diagnóstico preoperatorio, estadificación patológica, morbilidad, mortalidad y supervivencia.

**Resultados:** Se diagnosticaron 97 (2,5%) CP entre 3.825 sujetos cribados. Veinte personas con CP no se sometieron a cirugía debido a un estado avanzado de la enfermedad o a una histología de células pequeñas. Se llevaron a cabo 87 procedimientos quirúrgicos por sospecha de CP o CP demostrado mediante biopsia, detectados en la LDCT. La mayoría de los pacientes operados fueron varones (57 [85%]) de 64 años  $\pm$  9,1 años. Nueve pacientes se sometieron a una segunda operación por un cáncer de pulmón primario metacrónico. El tamaño medio del tumor fue de  $15,2 \pm 7,6$  mm. Ocho nódulos fueron benignos (9,2%). Se realizó lobectomía en 56 casos (83,6%). El adenocarcinoma (n=39; 58,2%) fue el tipo histológico más frecuente seguido por el carcinoma de células escamosas (n=17; 25,4%); 59 (88%) tumores se encontraban en estadio I. Trece pacientes (15,4%) tuvieron 16 complicaciones. Las tasas de supervivencia estimadas a los 5 y 10 años para el estadio I fueron del 93% (IC 95%: 79 al 98%) y del 83% (IC 95%: 65 al 92%), respectivamente.

**Conclusión:** El CCP se asoció con excelentes resultados quirúrgicos y con tasas de supervivencia a los 5 y 10 años superiores al 90 y al 80%, respectivamente.

© 2020 SEPAR. Publicado por Elsevier España, S.L.U. Todos los derechos reservados.

## Introduction

Lung cancer (LC) is the leading cause of cancer-related deaths worldwide, with 1.8 million lung cancer deaths each year.<sup>1</sup> Overall survival has not changed significantly in decades despite improvements in surgical treatment, chemotherapy, and radiotherapy.<sup>2</sup> The poor survival rates are mainly a result of advanced stage at diagnosis.

Lung cancer screening (LCS) with the use of low dose computed tomography (LDCT) is effective in detecting LC in early stages and reducing mortality.<sup>3–6</sup> The International Early Lung Cancer Action Program (I-ELCAP), showed in 2006 that 85% of LC cases diagnosed by LDCT were in stage I with an estimated survival of 88% at 10 years.<sup>7</sup>

In 2011 the National Lung Screening Trial (NLST), a randomized controlled trial, showed that LCS with LDCT reduces mortality in a high-risk population by 20% compared to screening with chest X-ray.<sup>8</sup> The United States Preventive Services Task Force recommends screening with LDCT for individuals meeting NLST inclusion criteria since 2013.<sup>9</sup>

Implementation of LCS guidelines in the United States is ongoing. Widespread screening in Europe<sup>10</sup> was precluded until the result of the Dutch-Belgian NELSON study were published. This publication has now finally been published<sup>11</sup> reported that LCS can significantly reduce deaths from lung cancer at 10 years by 24% in men and up to 33% in women compared to control.

Despite such promising results, screening skeptics continue to argue that LCS may cause harm by leading to invasive procedures in asymptomatic individuals with false positive screening findings.<sup>12</sup> Our group has published several papers analyzing different aspects related to this lung cancer screening cohort.<sup>13–16</sup> The work presented here is an analysis from a surgical point of view of the longest running lung cancer screening program in Europe, at the Clínica Universidad de Navarra, a program that is part of the I-ELCAP consortium since its inception in 1999.<sup>3,15</sup>

## Materials and Methods

This is a retrospective descriptive analysis of a prospectively recruited cohort. Study subjects enrolled in the Pamplona International Program for Early Detection of Lung Cancer with LDCT (P-ELCAP). Patients undergoing surgery based on screening findings are included in this study. Recruitment began in September of 2000 and is ongoing. Patient follow up is based on the I-ELCAP protocol, details of which are available online at [www.ielcap.org](http://www.ielcap.org). Inclusion criteria at our center include age  $\geq$  40, and a smoking history of  $\geq$  10 pack-years. Subjects must be asymptomatic. Those with a history of cancer diagnosed within the previous 5 years are excluded. Baseline LDCT and spirometry are performed in all cases, and periodic follow up with LDCT is recommended thereafter. Subjects with abnormal LDCT findings are managed according to the I-ELCAP protocol.<sup>17</sup> Briefly, for positive results on the baseline LDCT (noncalcified nodules  $\geq$  5 mm) additional diagnostic studies are recommended depending on the size and characteristics of a given nodule, and may include PET-CT scanning, antibiotic treatment with follow up LDCT at 1–3 months, bronchoscopy, transthoracic fine needle aspiration, or surgical biopsy. Subjects with a negative LDCT (without pulmonary nodules or with non-calcified nodules  $<$  5 mm) are scheduled for an annual visit. Annual LDCT is considered abnormal when a new nodule of any size is found or when a previously identified nodule grows, prompting ancillary studies. Prior to pulmonary resection, the mediastinum was further assessed, endobronchial ultrasound (EBUS), through endoscopic ultrasound (EUS) or mediastinoscopy. In all cases, a multidisciplinary team made up of pathologists, oncologists, pulmonologists, radiologists and thoracic surgeons decided whether surgical or oncological interventions were required.

For the purpose of the current study, the following parameters were considered: demographics, preoperative tests, surgical approach, type of lung resection, immediate and late post-surgical complications, anatomopathological results, stages, and survival.

Respiratory health status was determined by smoking status and the presence or absence of chronic obstructive pulmonary disease (COPD), defined as postbronchodilator FEV1/FVC < 70%, the presence of emphysema on LDCT, or both.

Staging of LC and definition of a metachronous tumor were defined according to the 8th edition of the international TNM classification.<sup>18</sup> Mediastinal nodal dissection (MLND) was performed according to the European Society of Thoracic Surgeons guidelines,<sup>19</sup> i.e., at least three mediastinal nodal stations, including the subcarinal lymph node, were excised. Mediastinal lymph node sampling (MLNS) was defined just as the removal of one or more lymph nodes, guided by preoperative or intraoperative findings at the surgeon's discretion.

A false positive of the screening process was considered when a patient underwent surgery after all pre-surgical diagnostic tests (including LDCTs) could not rule out lung cancer, and the pathology of the resected lesion was consistent with a benign diagnosis.

### Data Analysis

Quantitative data are presented as mean and standard deviation (SD). Categorical data were described using absolute and relative frequencies.

Lung cancer prevalence and incidence rates were calculated according to whether the diagnosis was based on the results of the baseline evaluation or on one of the follow-up screening rounds, respectively. Operative mortality included patients who died within 30 days. Medical records were reviewed to obtain mortality data on patients with lung cancer, and a Kaplan–Meier survival curve was constructed. All statistical analyses were performed using Stata/IC 12.1 (StataCorp. 2011. Stata Statistical Software: Release 12. College Station, TX: StataCorp LP).

### Ethics Approval

The University of Navarra's ethics committee approved the study protocol and all subjects signed an informed consent prior to enrollment in LCS.

### Result

Between September 2000 to December 2019, 97 LC (2.5%) were diagnosed in 3825 participants screened. Twenty patients had no surgery due to advanced stage or small cell histology and were referred to chemo-radiotherapy or SBRT. Eighty-seven surgeries were performed in 75 patients for suspected LC. When a preoperative biopsy was not feasible, we used wedge resection and frozen section as diagnostic tools. In case of lung cancer, the resection was performed during the same procedure, except in three patients, who had a wedge resection followed by a second surgery to complete the resection, due to an uncertain intraoperative diagnosis, once the definitive pathology results were known. Only 14 patients had a non-surgical preoperative diagnosis of LC obtained by CT-guided fine needle aspiration cytology (FNAC) (7), bronchoscopy (4), EBUS (1), and EUS (2) (Table 1).

Nine patients underwent a second operation for a metachronous primary lung cancer. One patient had a synchronous tumor resected in the same lobe. Eight (9.2%) patients were false positive of the screening process and all of them had diagnostic wedge resections (Table 2). One individual had 2 surgeries for a LC and a benign lesion.

To maintain data independence, only the therapeutic surgeries and the first surgery of the metachronous cases ( $n = 67$ ) were taken into consideration for descriptive and statistical analysis in LC patients.

Fifty-seven (85%) patients were male with a mean age of  $67 \pm 9.1$  years. Mean tumor size was  $15.2 \pm 7.6$ . Seven patients (10.5%) had

**Table 1**

Preoperative Diagnosis Technique.

Surgical Patients	Cases (N = 87)
Preoperative pathological diagnosis obtained by:	17 (19.5%)
CT guided FNAC	7
Bronchoscopy	4
EBUS (Endobronchial ultrasound)	1
EUS (Endoscopic ultrasound)	2
Surgical wedge resection <sup>a</sup>	3

<sup>a</sup> Biopsy without curative resection due to absence of definitive intraoperative diagnosis.

**Table 2**

Confirmed Surgical Benign Diagnosis.

Benign Lesions/Screening Process False Positives	Cases (N = 87)
<i>Histopathology, n (%)</i>	8 (9.2%)
Pulmonary fibrosis: N (%)	3 (37.5%)
Lymph node: N (%)	2 (25%)
Sclerosing haemangioma: N (%)	1 (12.5%)
Atypical adenomatous hyperplasia: N (%)	1 (12.5%)
Chronic inflammatory process	1 (12.5%)

**Table 3**

Patient Characteristics.

Patients Characteristics	N = 67
<i>Males, n (%)</i>	57 (85%)
<i>Females, n (%)</i>	10 (15%)
<i>Age, Mean (SD)</i>	34 (9.1)
<i>BMI, Mean (SD)</i>	26.9 (4.7)
<i>Pack/years, Mean (SD)</i>	53 (24)
<i>FVC, Mean (SD)</i>	3.9 (0.9)
<i>FEV1, Mean (SD)</i>	2.6 (31.3)
<i>FEV1/FVC, Mean (SD)</i>	67 (9.4)
<i>Health status, n (%)</i>	
No COPD nor emphysema	11 (16.4%)
COPD (only)	7 (10.5%)
Emphysema (only)	21 (31.3%)
COPD and emphysema	28 (41.8%)

COPD, 21 (31.3%) had emphysema, 28 (41.8%) had both, and 11 (16.4%) had neither of those key respiratory comorbidities (Table 3).

Surgical approaches included 44 posterolateral (65.7%), 4 anterolateral (6%), and 3 axillary thoracotomies (4.5%), 1 robotic-assisted thoracic surgery (RATS) (1.5%), and 15 video-assisted thoracoscopic surgeries (VATS) (22.4%).

Surgical lobectomy was performed in 56 cases (83.6%). Sublobar resections included; 3 anatomical segmentectomies (4.5%) for tumors measuring less than 1 cm and clinical stage IA in which margins were confirmed intraoperatively to be >1 cm, and 7 (10.5%) wedge resections in patients with limited lung function. One pneumonectomy (1.5%) was performed for a central tumor. Thirty-seven (55.2%) patients underwent MLND and 30 (44.8%) had MLNS. Adenocarcinoma ( $n = 39$ , 58.2%) was the most frequent histological type followed by squamous cell carcinoma ( $n = 17$ , 25.7%) (Table 4).

Sixteen complications were reported in 13 patients, including; persistent air leak (5), atrial fibrillation (2), and acute urinary retention (4), re-intervention due to bleeding (3), pneumonia (1), and empyema (1). There were no complications in the false positives of the screening process patients. One patient (1.2%) died from post-operative acute respiratory distress syndrome following a second pulmonary resection surgery due to a confirmed contralateral Stage II metachronous tumor.

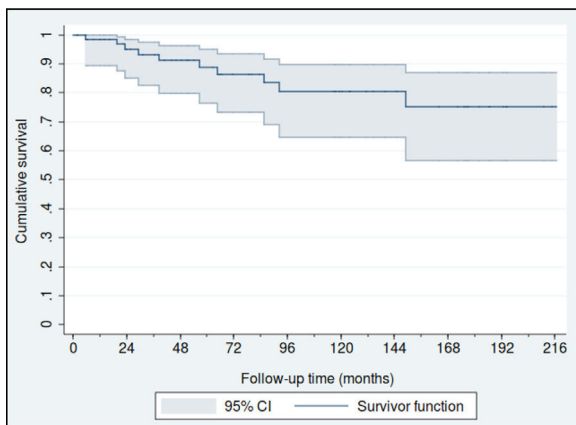
Of the 67 patients, 40 (59.7%) were diagnosed in the baseline screening of which 87.5% were in stage I. Twenty-seven (40.3%)

**Table 4**  
Surgical Lung Cancer Patients' Characteristics.

	N = 67
<b>Method of resection, n (%)</b>	
Posterolateral thoracotomy	44 (65.7%)
Anterolateral thoracotomy	4 (6.0%)
Axillary thoracotomy	3 (4.5%)
Video-assisted thoracoscopic surgery	15 (22.4%)
Robotic-assisted thoracic surgery	1 (1.5%)
<b>Type of resection, n (%)</b>	
Sublobar	
Segmentectomy	3 (4.5%)
Wedge resection	7 (10.4%)
Lobectomy	56 (83.6%)
Pneumonectomy	1 (1.5%)
<b>Lymph node resection, n (%)</b>	
Mediastinal lymph node dissection	37 (55.2%)
Mediastinal lymph node sampling	30 (44.8%)
<b>Histopathology, n (%)</b>	
Adenocarcinoma	39 (58.2%)
Squamous	17 (25.4%)
Large cell	8 (11.9%)
Small cell	1 (1.5%)
Typical carcinoid	1 (1.5%)
Atypical carcinoid	1 (1.5%)

**Table 5**  
Pathological Staging of Surgical Patients From Baseline and Annual LDCT.

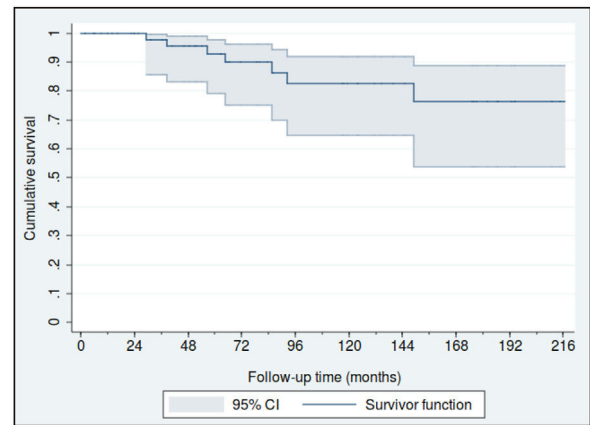
Surgical Lung Cancer Patients	Baseline LDCT (%)	Annual LDCT (%)	Total
<b>Stage</b>			
I	35 (87.5%)	24 (88.9%)	59 (88%)
II	2 (5%)	2 (7.4%)	4 (6%)
III	3 (7.5%)	1 (3.7%)	4 (6%)
Total	40 (59.7%)	27 (40.3%)	67 (100%)



**Fig. 1.** Kaplan–Meier overall survival curve.

patients were diagnosed in annual screenings, 88.9% of which were in stage I (Table 5).

Fifty-nine patients (88.1%) were diagnosed in Stage I, 4 in Stage II (6%) and another 4 in stage III (6%). The estimated overall survival rates at 5 and 10 years were 88% (95% CI: 77%–95%) and 80% (95% CI: 65%–90%), respectively (Fig. 1), and the 5 and 10 year survival rates for stage I patients were 93% (95% CI: 79%–98%) and 83% (95% CI: 65%–92%), respectively (Fig. 2).



**Fig. 2.** Kaplan–Meier survival curve for all patients diagnosed as pathologic stage I.

## Discussion

Our study confirms previous findings regarding favorable surgical outcomes in the LCS setting, with overall five and 10-year survival rates of 88% and 80%, respectively. The majority of subjects in this cohort underwent lobectomies via thoracotomy, a surgical approach that may become obsolete as sublobar resections and minimal invasive techniques become more prevalent in the LCS setting. Nevertheless, the surgical treatment of lung cancer in early stages and the extent of lung resections, with its implications for survival, still requires extensive research. In our series, a lobectomy was considered the “gold standard” of pulmonary resection for patients with adequate lung function and a confirmed diagnosis of malignancy.

Most retrospective studies have shown that VATS segmentectomy may be a valid procedure lung cancer patients in clinical stage I,<sup>20–23</sup> with lower complication rates and shorter hospital stays, and no differences in terms of overall survival. Two randomized controlled trials in progress will attempt to answer these questions (CALGB 140503 and JCOG0802/WJOG4607L).<sup>24,25</sup>

Only 22.4% of the surgeries in our study were VATS, mainly due to the slow implementation of VATS in our center. It has been shown that, as compared to open classical thoracotomy, VATS is associated with a significant reduction in perioperative morbidity and mortality.<sup>26</sup> In a randomized trial, Bendixen et al. observed that when compared to antero-lateral thoracotomy, VATS is associated with less postoperative pain and better quality of life during the first year after surgery.<sup>27</sup> Preliminary results of the VIOLET trial,<sup>28</sup> a randomized multicenter trial in the United Kingdom led by Dr. Eric Lim comparing the performance and morbidity of VATS with open thoracotomy, showed that patients who received VATS had a significant reduction in overall in-hospital complications and stayed in hospital one day less compared to patients who received open surgery. That notwithstanding, oncologic outcomes were similar. Therefore, it appears that minimal invasive approaches may well become the surgery of choice for LC resections and even moreso in the context of LCS.

In our series, 55.2% of the subjects underwent systematic lymph node dissection. Controversy persists regarding the optimal extent of lymph node dissection in early stage LC. European Thoracic Surgery Society guidelines recommended a systematic dissection of nodes at all stages in 2006 to ensure complete resection and adequate staging.<sup>19</sup> Lobe specific nodal dissection is considered acceptable for peripheral T1 lesions if hilar and interlobar nodes are negative at intra operative frozen section. A similar recommendation was proposed in 2010 by the British Thoracic Society.<sup>29</sup> Subsequently, in a randomized controlled trial comparing medi-



astinal lymph node dissection (MLND) vs. sampling after negative side-specific hilar and mediastinal lymph node sampling, Darling et al. demonstrated that MLND did not improve survival nor did it decrease the incidence of local or regional recurrence of patients with early-stage non small cell LC.<sup>30</sup>

In our cohort, an overall positive effect on survival rates was observed in the MLND group (log-rank-test  $P = .04$ ). However, when we split the data set according to early (I) and more advanced stages (II and III), the difference between MLND and MLNS only held true for the former. There is inconsistency among published reports in early stage NSCLC, which could be related to tumor size.<sup>31,32</sup> Lymphadenectomy and the extent of lung resection in LCS early stage disease should benefit from further prospective studies and larger sample sizes.

Ongoing studies, like IELCART (Initiative for Early Lung Cancer Research on Treatment)<sup>33</sup> in which our institution participates, aim to advance knowledge regarding the optimal surgical treatment of patients with early stage LC. Key variables include; the type of resection, standardization of margin measurements, extent of lymphadenectomy, and alternative therapeutic approaches (SBRT or watchful waiting), as well as the impact on quality of life, recurrence rates, and long-term survival.

Interestingly, after the diagnosis and surgical treatment of a first LC we found a significant number of patients with a second metachronic primary tumor that met the Martini-Melamed and the IASLC criteria.<sup>18</sup> This raises an important issue. Patients with lung cancer are at a very high risk of developing additional lung cancers. In our cohort, 9 patients had more than one metachronous cancer. Since most patients with lung cancer also have co-existing lung disease, such as COPD and emphysema,<sup>34</sup> a conservative lung-sparing surgical approach may be important since additional resections may be in store for a given LCS patient. In addition, this increased risk for subsequent lung cancers underlines the need for continuing lung cancer screening in patients who undergo resection.<sup>35</sup>

On the other hand, one of the main obstacles of LCS is the very nature of an early detection program, in which the suspicious lesions are almost always small. They may not be anatomically located in peripheral or accessible areas and/or have a partially solid consistency, which would make it difficult, or even impossible, to obtain a preoperative diagnosis via transthoracic or endoscopic needle aspiration. Therefore, it is not unusual for surgery to be both diagnostic and therapeutic in this setting.

Our series demonstrated certain limitations to obtain a preoperative diagnosis with only 16% of surgical patients. Those indeterminate cases, which require diagnostic surgery, demand a biopsy of the suspicious lesion in order to allow an adequate intraoperative diagnosis and by consequence, the definition of the extent of the curative pulmonary resection. The reason why most nodules are undiagnosed prior to surgery is likely the small size and location. This also entails difficulties for intraoperative diagnosis due to the limitations for the surgeon to see and feel the lesions in the context of minimal invasive surgery.

Therefore, identifying and locating these lesions has become a veritable challenge, which has created a surge in different preoperative marking alternatives. This is why preoperative marking of lesions is a tool which every LCS Program must count on.<sup>36,37</sup>

Having a high proportion of undiagnosed patients making it to the operating room, together with the false-positive rate described, suggests that proper risk assessment, compliance with a correct diagnostic algorithm, and a consensus decision by an expert multidisciplinary committee are key in LCS. Unnecessary invasive procedures must be limited in order for LCS to succeed.

The results in this cohort, with 9.2% of false positives of the screening process that underwent surgery, coincide with the results of I-ELCAP.

Several strategies have been suggested to decrease it. Firstly, a better selection of the inclusion criteria, which would lead to a more precise definition of high-risk candidates, should be considered. Standardized and structured reporting systems such as Lung-RADS<sup>38</sup> or the I-ELCAP management system<sup>17</sup> should be used. Refined diagnostic algorithms determined under consensus and scientific evidence should be adapted, and prediction tools for risk analysis should be established.<sup>39,40</sup> Finally, well validated radiological techniques, such as the volumetric study of indeterminate pulmonary nodules,<sup>41</sup> artificial intelligence and radiomic lung nodules prediction models,<sup>42,43</sup> should all be encouraged. These, together with the management by an expert multidisciplinary team, have demonstrated their effectiveness in minimizing surgical intervention for benign disease, minimizing the number of missed curable LC. Even so, false positives would be difficult to avoid completely. The evidence of surgical procedures for benign disease in LCS with LDCT varies from 0% to 33%, with an average of 18%.<sup>44</sup> Wilson and colleagues evaluated 3642 participants in the PLUSS<sup>45</sup> study using an internal protocol. Eighty-two (2.3%) underwent surgical procedures, 28 of which (34%) had benign disease. The study investigators cited “an apparent generalized bias toward aggressive intervention” for indeterminate pulmonary nodules. The DLCTS (Danish Lung Cancer Screening Trial) group reported 12% of false-positive surgeries.<sup>36</sup> Our results show that following validated management protocols, such as that of IELCAP, can minimize the number of individuals who undergo surgery for a benign lesion. Albeit, of those who unfortunately still underwent surgery, none showed any consequential complications.

We agree with current European guidelines suggesting that LCS should guarantee comprehensive quality of care and be led by an expert multidisciplinary team that provides high quality, timely, continuous and comprehensive information on the benefits and risks of screening. Informed decision-making eliminates misperceptions and reduces the psychological burden related to diagnostic and therapeutic interventions. The multidisciplinary team should include surgeons with experience in minimally invasive procedures and should be equipped with technical and/or technological tools that allow for intra-operative localization of small nodules. Furthermore, we must not forget that every LCS program must include smoking cessation and should emphasize the importance of adherence to the program with a commitment to annual screening even in the face of prior negative results, a limitation already described by programs like ours.<sup>15,46,47</sup>

One potential limitation of this study is that it is based on data from a single center; therefore, our population, resources, and staffing characteristics may limit the generalizability of our results. However, we believe that surgery for lung cancer is quite standardized across Centers and that similar results will probably be achieved by others.

In summary, our results show that lung cancer screening is effective in detecting lung cancer at early stages, and that the majority of patients achieve long term survival after surgical resection. Ongoing research trials will help determine what the optimal surgical approach is for these patients.

#### Funding Source

The authors received no specific funding for this work.

#### Conflict of Interests

The authors declare that they have no conflict of interests.

## Appendix A. Supplementary data

Supplementary data associated with this article can be found, in the online version, at [doi:10.1016/j.arbres.2020.03.026](https://doi.org/10.1016/j.arbres.2020.03.026).

## References

1. Ferlay J, Soerjomataram I, Dikshit R, et al. Cancer incidence and mortality worldwide: Sources, methods and major patterns in GLOBOCAN 2012. *Int J Cancer*. 2015;136:E359–86, <http://dx.doi.org/10.1002/ijc.29210>.
2. Siegel RL, Miller KD, Jemal A, Siegel RL, Miller KDJ. Cancer statistics, 2015. *CA Cancer J Clin*. 2015;65:5–29, <http://dx.doi.org/10.3322/caac.21254>.
3. Henschke CI, McCauley DI, Yankelevitz DF, et al. Early lung cancer action project: overall design and findings from baseline screening. *Lancet*. 1999;354:99–105, [http://dx.doi.org/10.1016/S0140-6736\(99\)06093-6](http://dx.doi.org/10.1016/S0140-6736(99)06093-6).
4. Diederich S, Thomas M, Semik M, et al. Screening for early lung cancer with low-dose spiral computed tomography: results of annual follow-up examinations in asymptomatic smokers. *Eur Radiol*. 2004;14:691–702, <http://dx.doi.org/10.1007/s00330-003-2200-5>.
5. Sone S, Li F, Yang ZG, et al. Results of three-year mass screening programme for lung cancer using mobile low-dose spiral computed tomography scanner. *Br J Cancer*. 2001;84:25–32, <http://dx.doi.org/10.1054/bjoc.2000.1531>.
6. Sobue T, Moriyama N, Kaneko M, et al. Screening for lung cancer with low-dose helical computed tomography: anti-lung cancer association project. *J Clin Oncol*. 2002;20:911–20, <http://dx.doi.org/10.1200/JCO.2002.20.4911>.
7. International Early Lung Cancer Action Program Investigators, Henschke CI, Yankelevitz DF, et al. Survival of patients with stage I lung cancer detected on CT screening. *N Engl J Med*. 2006;355:1763–71, <https://dx.doi.org/10.1056/NEJMoa060476>.
8. NLST Team, Aberle DR, Adams AM BC, Black WC, Clapp JD, Fagerstrom RM, et al. Reduced lung-cancer mortality with low-dose computed tomographic screening – the national lung screening trial research team. *N Engl J Med*. 2011;365:395–409, <https://dx.doi.org/10.1056/NEJMoa1102873.Reduced>.
9. Humphrey LL, Deffebach M, Pappas M, et al. Screening for lung cancer with low-dose computed tomography: a systematic review to update the US Preventive services task force recommendation. *Ann Intern Med*. 2013;159:411–20, <http://dx.doi.org/10.7326/0003-4819-159-6-201309170-00690>.
10. Oudkerk M, Devaraj A, Vliegenthart R, et al. European position statement on lung cancer screening. *Lancet Oncol*. 2017;18:e754–66, [http://dx.doi.org/10.1016/S1470-2045\(17\)30861-6](http://dx.doi.org/10.1016/S1470-2045(17)30861-6).
11. de Koning HJ, van der Aalst CM, de Jong PA, et al. Reduced lung-cancer mortality with volume CT screening in a randomized trial. *N Engl J Med*. 2020;382:503–13, <http://dx.doi.org/10.1056/NEJMoa1911793>.
12. Ruano-Ravina A, Pérez Ríos M, Fernández-Villar A. Cribado de cáncer de pulmón con tomografía computarizada de baja dosis después del National Lung Screening Trial. El debate continúa abierto. *Arch Bronconeumol*. 2013, <http://dx.doi.org/10.1016/j.arbres.2012.10.003>.
13. Bastarrika G, García-Velloso MJ, Lozano MD, et al. Early lung cancer detection using spiral computed tomography and positron emission tomography. *Am J Respir Crit Care Med*. 2005;171:1378–83, <http://dx.doi.org/10.1164/rccm.200411-14790C>.
14. de-Torres JP, Marín JM, Casanova C, et al. Identification of COPD patients at high risk for lung cancer mortality using the COPD-LUCSS-DLCO. *Chest*. 2016;149:936–42, <http://dx.doi.org/10.1378/chest.15-1868>.
15. Sanchez-Salcedo P, Berto J, De-Torres JP, et al. Cribado de cáncer de pulmón: catorce años de experiencia del Programa Internacional de Detección Precoz de Cáncer de Pulmón con TBDR de Pamplona (P-IELCAP). *Arch Bronconeumol*. 2015;51:169–76, <http://dx.doi.org/10.1016/j.arbr.2015.02.015>.
16. Sanchez-Salcedo P, Wilson DO, De-Torres JP, et al. Improving selection criteria for lung cancer screening: the potential role of emphysema. *Am J Respir Crit Care Med*. 2015;191:924–31, <http://dx.doi.org/10.1164/rccm.201410-18480C>.
17. Henschke CI. International early lung cancer action program protocol. Cornell University, <https://dx.doi.org/10.1097/01.JTO.0000283043.57906.f3>.
18. Rami-Porta R (International A for the S of LC). *Staging Manual in Thoracic Oncology – IASLC*.
19. Lardiniois D, De Leyn P, Van Schil P, et al. ESTS guidelines for intraoperative lymph node staging in non-small cell lung cancer. *Eur J Cardio-thoracic Surg*. 2006;30:787–92, <http://dx.doi.org/10.1016/j.ejcts.2006.08.008>.
20. Ghaly G, Kamel M, Nasar A, et al. Video-assisted thoracoscopic surgery is a safe and effective alternative to thoracotomy for anatomical segmentectomy in patients with clinical stage I non-small cell lung cancer. *Ann Thorac Surg*. 2016;101:465–72, <http://dx.doi.org/10.1016/j.athoracsur.2015.06.112>.
21. Lex JR, Naidu B. In patients with resectable non-small-cell lung cancer, is video-assisted thoracoscopic segmentectomy an appropriate alternative to video-assisted thoracoscopic lobectomy? *Interact Cardiovasc Thorac Surg*. 2016;23:826–31, <http://dx.doi.org/10.1093/icvts/ivw202>.
22. Shapiro M, Weiser TS, Wisnivesky JP, Chin C, Arustamyan M, Swanson SJ. Thoracoscopic segmentectomy compares favorably with thoracoscopic lobectomy for patients with small stage I lung cancer. *J Thorac Cardiovasc Surg*. 2009;137:1388–93, <http://dx.doi.org/10.1016/j.jtcvs.2009.02.009>.
23. Witte B, Stenz C, Vahl CF, Huertgen M. Comparative intention-to-treat analysis of the video-assisted thoracoscopic surgery approach to pulmonary segmentectomy for lung carcinoma. *Interact Cardiovasc Thorac Surg*. 2015;21:276–83, <http://dx.doi.org/10.1093/icvts/ivv143>.
24. Altorki NK, Wang X, Wigle D, et al. Perioperative mortality and morbidity after sublobar versus lobar resection for early-stage non-small-cell lung cancer: post-hoc analysis of an international, randomised, phase 3 trial (CALGB/Alliance 140503). *Lancet Respir Med*. 2018;6:915–24, [http://dx.doi.org/10.1016/S2213-2600\(18\)30411-9](http://dx.doi.org/10.1016/S2213-2600(18)30411-9).
25. Nakamura K, Saji H, Nakajima R, et al. A Phase III randomized trial of lobectomy versus limited resection for small-sized peripheral non-small cell lung cancer (JCOG0802/WJOG4607L). *Jpn J Clin Oncol*. 2009;40:271–4, <http://dx.doi.org/10.1093/jjco/hyp156>.
26. Flores R, Bauer T, Aye R, et al. Balancing curability and unnecessary surgery in the context of computed tomography screening for lung cancer. *J Thorac Cardiovasc Surg*. 2014;147:1619–26, <http://dx.doi.org/10.1016/j.jtcvs.2013.11.001>.
27. Bendixen M, Jørgensen OD, Kronborg C, Andersen C, Licht PB. Post-operative pain and quality of life after lobectomy via video-assisted thoracoscopic surgery or anterolateral thoracotomy for early stage lung cancer: a randomised controlled trial. *Lancet Oncol*. 2016;17:836–44, [http://dx.doi.org/10.1016/S1470-2045\(16\)00173-X](http://dx.doi.org/10.1016/S1470-2045(16)00173-X).
28. Lim E, Batchelor T, Shackcloth M, et al. Study protocol for Video assisted thoracoscopic lobectomy versus conventional Open Lobectomy for lung cancer, a UK multicentre randomised controlled trial with an internal pilot (the VIOLET study). *BMJ Open*. 2019;9:e029507, <http://dx.doi.org/10.1136/bmjopen-2019-029507>.
29. Lim E, Baldwin D, Beckles M, et al. Guidelines on the radical management of patients with lung cancer. *Thorax*. 2010;65 Suppl. III:i11–27, <http://dx.doi.org/10.1136/thx.2010.145938>.
30. Darling GE, Allen MS, Decker PA, et al. Randomized trial of mediastinal lymph node sampling versus complete lymphadenectomy during pulmonary resection in the patient with N0 or N1 (less than hilar) non-small cell carcinoma: results of the American College of Surgery Oncology Group Z0030 Trial. *J Thorac Cardiovasc Surg*. 2011;141:662–70, <http://dx.doi.org/10.1016/j.jtcvs.2010.11.008>.
31. Shen-Tu Y, Mao F, Pan Y, et al. Lymph node dissection and survival in patients with early stage nonsmall cell lung cancer. *Med (United States)*. 2017;96, <http://dx.doi.org/10.1097/MD.00000000000008356>.
32. David EA, Cooke DT, Chen Y, Nijar K, Canter RJ, Cress RD. Does lymph node count influence survival in surgically resected non-small cell lung cancer? *Ann Thorac Surg*. 2017;103:226–35, <http://dx.doi.org/10.1016/j.athoracsur.2016.05.018>.
33. Flores R, Taioli E, Yankelevitz DF, et al. Initiative for early lung cancer research on treatment: development of study design and pilot implementation. *J Thorac Oncol*. 2018;13:946–57, <http://dx.doi.org/10.1016/j.jtho.2018.03.009>.
34. de-Torres JP, Wilson DO, Sanchez-Salcedo P, et al. Lung cancer in COPD patients: development and validation of the COPD Lung Cancer Screening Score (COPD-LUCSS). *Am J Respir Crit Care Med*. 2015, <http://dx.doi.org/10.1164/rccm.201407-12100C>.
35. Flores RM. Lung cancer survivors need lung cancer screening. *J Thorac Cardiovasc Surg*. 2015;149:53–4, <http://dx.doi.org/10.1016/j.jtcvs.2014.09.115>.
36. Petersen RH, Hansen HJ, Dirksen A, Pedersen JH. Lung cancer screening and video-assisted thoracic surgery. *J Thorac Oncol*. 2012;7:1026–31, <http://dx.doi.org/10.1097/JTO.0b013e31824fe942>.
37. Zaman M, Bilal H, Woo CY, Tang A. In patients undergoing video-assisted thoracoscopic surgery excision, what is the best way to locate a subcentimetre solitary pulmonary nodule in order to achieve successful excision? *Interact Cardiovasc Thorac Surg*. 2012;15:266–72, <http://dx.doi.org/10.1093/icvts/ivs068>.
38. Pinsky PF, Gierada DS, Black W, et al. Performance of lung-RADS in the national lung screening trial: a retrospective assessment. *Ann Intern Med*. 2015, <http://dx.doi.org/10.7326/M14-2086>.
39. Swensen SJ, Silverstein MD, Ilstrup DM, Schleck CD, Edell ES. The probability of malignancy in solitary pulmonary nodules. Application to small radiologically indeterminate nodules. *Arch Intern Med*. 1997;157:849–55, <http://www.ncbi.nlm.nih.gov/pubmed/9129544> (accessed 27.07.19).
40. Winkler Wille MM, van Riel SJ, Saghir Z, et al. Predictive accuracy of the pancan lung cancer risk prediction model-external validation based on CT from the danish lung cancer screening trial. *Eur Radiol*. 2015, <http://dx.doi.org/10.1007/s00330-015-3689-0>.
41. Mehta HJ, Ravenel JG, Shaftman SR, et al. The utility of nodule volume in the context of malignancy prediction for small pulmonary nodules. *Chest*. 2014, <http://dx.doi.org/10.1378/chest.13-0708>.
42. Weikert T, Akinci D'Antonoli T, Bremerich J, Stieltjes B, Sommer G, Sauter AW. Evaluation of an AI-powered lung nodule algorithm for detection and 3D segmentation of primary lung tumors. *Contrast Media Mol Imaging*. 2019;2019:1–10, <http://dx.doi.org/10.1155/2019/1545747>.
43. Choi W, Oh JH, Riyahi S, et al. Radiomics analysis of pulmonary nodules in low-dose CT for early detection of lung cancer. *Med Phys*. 2018;45:1537–49, <http://dx.doi.org/10.1002/mp.12820>.
44. Pastorino U. Lung cancer screening. *Br J Cancer*. 2010, <http://dx.doi.org/10.1038/sj.bjc.6605660>.
45. Wilson DO, Weissfeld JL, Fuhrman CR, et al. The Pittsburgh Lung Screening Study (PLUSS). *Am J Respir Crit Care Med*. 2008, <http://dx.doi.org/10.1164/rccm.200802-336oc>.
46. Wender R, Fontham ETH, Barrera E, et al. American Cancer Society lung cancer screening guidelines. *CA Cancer J Clin*. 2013;63:106–17, <http://dx.doi.org/10.3322/caac.21172>.
47. Montes U, Seijo LM, Campo A, Alcáide AB, Bastarrika G, Zulueta JJ. Factors determining early adherence to a lung cancer screening protocol. *Eur Respir J*. 2007;30:532–7, <http://dx.doi.org/10.1183/09031936.00143206>.