

## Review article

## Bioengineered Lungs: A Challenge and An Opportunity



Ramon Farré<sup>a,b,c,\*</sup>, Jordi Otero<sup>a,b</sup>, Isaac Almendros<sup>a,b,c</sup>, Daniel Navajas<sup>a,b,d</sup>

<sup>a</sup> Unitat Biofísica i Bioenginyeria, Facultat de Medicina i Ciències de la Salut, Universitat de Barcelona, Barcelona, Spain

<sup>b</sup> CIBER de Enfermedades Respiratorias, Madrid, Spain

<sup>c</sup> Institut Investigacions Biomèdiques August Pi Sunyer, Barcelona, Spain

<sup>d</sup> Institut de Bioenginyeria de Catalunya, The Barcelona Institute of Science and Technology, Barcelona, Spain

### ARTICLE INFO

#### Article history:

Received 13 August 2017

Accepted 15 September 2017

Available online 1 November 2017

#### Keywords:

Tissue engineering  
Regenerative medicine  
Lung transplantation  
Lung repair  
Lung regeneration

### ABSTRACT

Lung biofabrication is a new tissue engineering and regenerative development aimed at providing organs for potential use in transplantation. Lung biofabrication is based on seeding cells into an acellular organ scaffold and on culturing them in an especial purpose bioreactor. The acellular lung scaffold is obtained by decellularizing a non-transplantable donor lung by means of conventional procedures based on application of physical, enzymatic and detergent agents. To avoid immune recipient's rejection of the transplanted bioengineered lung, autologous bone marrow/adipose tissue-derived mesenchymal stem cells, lung progenitor cells or induced pluripotent stem cells are used for biofabricating the bioengineered lung. The bioreactor applies circulatory perfusion and mechanical ventilation with physiological parameters to the lung during biofabrication. These physical stimuli to the organ are translated into the stem cell local microenvironment – e.g. shear stress and cyclic stretch – so that cells sense the physiological conditions in normally functioning mature lungs. After seminal proof of concept in a rodent model was published in 2010, the hypothesis that lungs can be biofabricated is accepted and intense research efforts are being devoted to the topic. The current experimental evidence obtained so far in animal tests and in *ex vivo* human bioengineered lungs suggests that the date of first clinical tests, although not immediate, is coming. Lung bioengineering is a disrupting concept that poses a challenge for improving our basic science knowledge and is also an opportunity for facilitating lung transplantation in future clinical translation.

© 2017 SEPAR. Published by Elsevier España, S.L.U. All rights reserved.

## Pulmones biofabricados: un desafío y una oportunidad

### RESUMEN

La biofabricación de pulmones es un nuevo desarrollo en ingeniería de tejidos y medicina regenerativa destinada a proporcionar órganos que se podrían usar para trasplante. Se basa en la siembra de células en un andamio acelular del órgano y su cultivo en un biorreactor específico. El andamio acelular se obtiene desceldularizando un pulmón no trasplantable por medio de procedimientos convencionales basados en agentes físicos, enzimáticos y detergentes. Para evitar el rechazo inmunitario del receptor del pulmón una vez trasplantado, en la biofabricación se usan células madre autólogas mesenquimales derivadas de médula ósea/tejido adiposo, células progenitoras de pulmón o células madre pluripotentes inducidas. El biorreactor aplica perfusión circulatoria y ventilación mecánica con parámetros fisiológicos al pulmón durante el proceso. Estos estímulos físicos al órgano se traducen en el microambiente local de la célula madre –por ejemplo, tensión de cizallamiento y estiramiento cíclico– para que las células perciban las condiciones fisiológicas típicas en el pulmón maduro con funcionamiento normal. Tras la publicación en 2010 de la prueba de concepto en un modelo de roedor, se ha aceptado la hipótesis de que los pulmones pueden ser biofabricados y se están dedicando grandes esfuerzos de investigación a este tema. Las pruebas experimentales obtenidas hasta ahora en ensayos con animales y *ex vivo* en pulmones humanos

#### Palabras clave:

Ingeniería tisular  
Medicina regenerativa  
Trasplante de pulmón  
Reparación pulmonar  
Regeneración pulmonar

\* Corresponding author.

E-mail address: [rfarre@ub.edu](mailto:rfarre@ub.edu) (R. Farré).

biofabricados indican que la fecha de las primeras pruebas clínicas, aunque no inmediata, se va acercando. La bioingeniería pulmonar es un concepto disruptivo que nos desafía a mejorar nuestros conocimientos científicos básicos y da una oportunidad para facilitar el trasplante de pulmón en una futura traslación clínica.

© 2017 SEPAR. Publicado por Elsevier España, S.L.U. Todos los derechos reservados.

## Introduction

It goes without saying that there is a considerable need of lungs for transplantation, as indicated by the progressively increasing waiting lists of patients for lung transplant worldwide. One of the causes limiting the availability of suitable lungs is that a high number of donor lungs are not acceptable according to current quality control criteria. To solve this problem, research efforts are currently devoted to improve organ preservation procedures and donor management to rescue lungs that otherwise would be not suitable for transplantation.<sup>1,2</sup> These investigations are expected to result in increasing the number of lungs for transplantation.

This review is focused on a novel alternative procedure for obtaining organs for transplantation: lung biofabrication. This approach, which is still in its first experimental steps, has raised considerable expectancy and research efforts in recent years. Lung biofabrication is based on building a new lung by seeding an acellular organ scaffold with progenitor cells from the patient that would be the recipient of the regenerated organ. Such an “autologous” lung would avoid the difficulty of conventional allogeneic transplanted lungs to deal with immune rejection from the recipient, which is the main cause why lung transplantation has a success rate (~50% survival after 5–6 years) lower than in other organ transplant.<sup>3</sup> The following text is aimed at presenting the principles and methods of lung biofabrication, the current state of the art of the topic and its potential for future clinical translation.

## The Bioengineered Lung Approach

A new possible way to increase the availability of organs for transplantation is currently facilitated by recent progress in stem cell biology and in tissue engineering and regenerative medicine. Indeed, the hypothesis that tissues and organs can be biofabricated is currently accepted and, after proofs of concept have been published in the last years, intense research worldwide is focused on the topic. Although the terms “bioengineered” or “biofabrication” suggest that organs are built artificially, it should be mentioned that the current approach is mainly based on using natural components such as cells and extracellular matrix (ECM) scaffolds. In fact, the rationale is to replicate the natural process of organ development. Namely, an organ is built by precisely placing newly divided cells into a 3D structure where cells differentiate in an environment providing the chemical (e.g. nutrients, growth factors, cytokines, chemokines) and physical (e.g. temperature, oxygen pressure, stiffness) cues required by the cells.

Hence, organ/tissue biofabrication is based on the suitable combination of three core elements: cells, scaffolds and bioreactors, as illustrated by Fig. 1. Briefly, a donor lung which is not acceptable for transplantation is decellularized to eliminate the entire cell components from the lung. The resulting acellular lung scaffold, which maintains the 3D structural complexity of the native organ, is recellularized with new cells. The process of new organ biofabrication is carried out placing the recellularized scaffold into a bioreactor aimed at providing physico-chemical stimuli for optimal cell homing, proliferation and differentiation (Fig. 1).

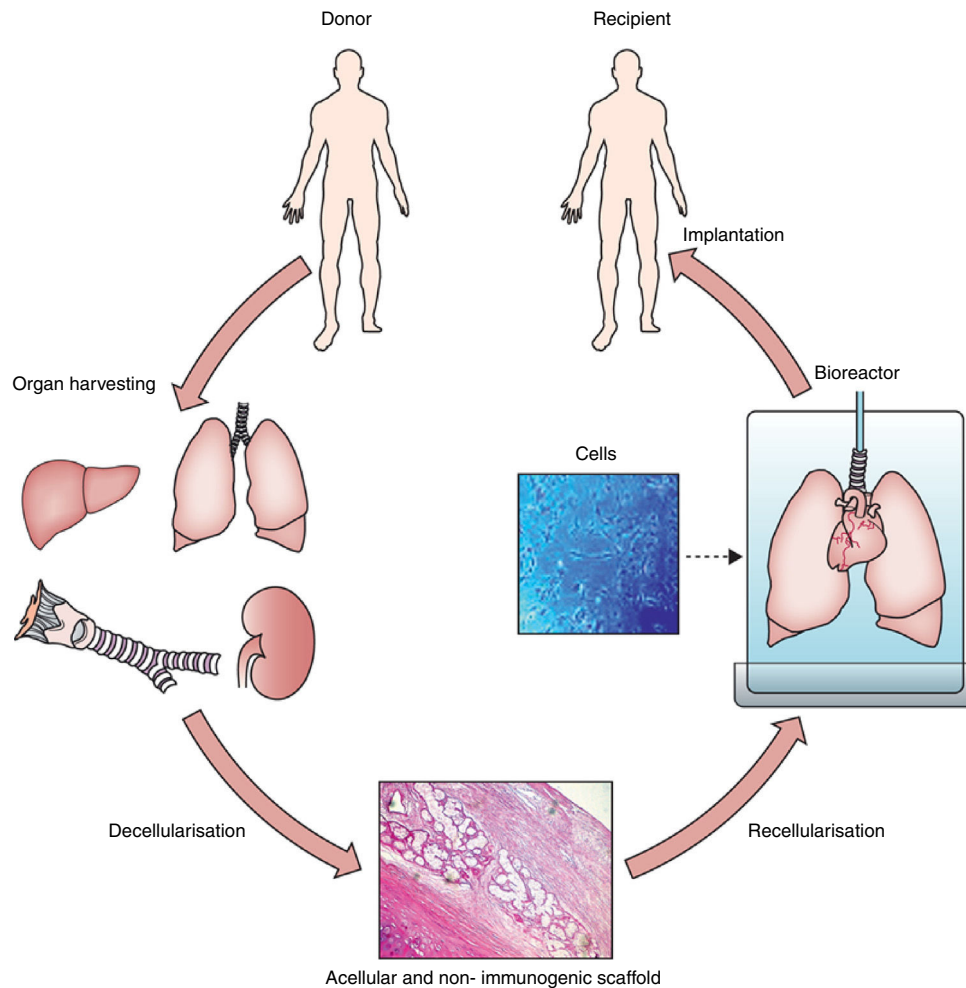
## Cells Employed in Lung Biofabrication

The optimal cell types for organ biofabrication are still an open question. An obvious option could be to employ differentiated cells corresponding to the organ, for instance bronchial and alveolar epithelial cells for lung biofabrication. Although the simplest approach from a biological perspective, this option would not be feasible in routine applications since, as these differentiated cells virtually do not proliferate, a great number of donor organs would be required to biofabricate one single *de novo* organ. Taking into account the high proliferative and differentiation capacities of stem/progenitor cells, using these cells for repopulating acellular scaffolds is the preferred current approach.

The ideal option is to use autologous stem/progenitor cells to avoid immunoreaction of the bioengineered organ by the receptor. Adult stem cells, such as bone marrow- or adipose tissue-derived mesenchymal stem cells (MSCs) have the advantage of being easily obtained but suffer from the drawback that MSCs are not totipotent and thus cannot differentiate into all the cell phenotypes in a given organ (up to 60 in the lung).<sup>4</sup> The most promising option is to bioengineer organs with induced pluripotent stem cells (iPSCs). These cells, obtained by reprogramming adult cells into an embryonic-like stage, have full differentiation capacity and, if the donor and recipient are the same patient, iPSCs are not immunogenic. However, these cells are relatively new, with their long term fate unknown, and hence some open questions about potential clinical use are still open. In the specific case of lung biofabrication, almost all types of stem cells have been employed to advance our understanding of the mechanisms involved. In rodent lung biofabrication, seminal studies employed both adult differentiated epithelial/endothelial cells and embryonic stem cells. In more recent experimental works using human lung scaffolds, both bone marrow- and adipose tissue-derived MSCs, and human iPSC-derived pulmonary progenitor cells have been used.

## Scaffolds for Lung Bioengineering

In case of bioengineering tissues that are relatively simple from a structural viewpoint (e.g. bone repair, skin, heart valves, vessels) the scaffold can consist on artificial 3D substrates made by natural (e.g. collagen, chitosan) or artificial polymers (e.g. polyglycolic acid (PGA), polylactic acid (PLA)) using different techniques (e.g. solvent casting, fiber bonding, electrospinning).<sup>5,6</sup> Other current techniques to build 3D constructs composed of ECM and cells (e.g. using cell sheets<sup>7</sup> or bioprinters)<sup>8</sup> can be used for bioengineering structurally simple tissues/organs. Nevertheless, none of the currently available techniques, including the most advanced 3D printers, can provide the resolution required to mimic the structural details of a complex organ such as heart, lung, liver or kidney. For instance, the adult lung is composed of ~300 millions of alveoli, each with a diameter of ~300 μm. This airway tree is paralleled with a similarly complex circulatory tree since each alveolus is accompanied by blood capillaries with a typical diameter of ~8 μm. The alveolar-capillary membrane separating air and blood is extremely thin (~3 μm), presenting an effective gas exchange surface of 70 m<sup>2</sup>. And all this structure is packed in a total volume



**Fig. 1.** General process of lung bioengineering. A donor lung is decellularized and the organ scaffold is seeded with cells and placed into a bioreactor for lung biofabrication. See text for detailed explanation.

Source: Reproduced from Ref. 32, with permission of the copyright owner of The Lancet.

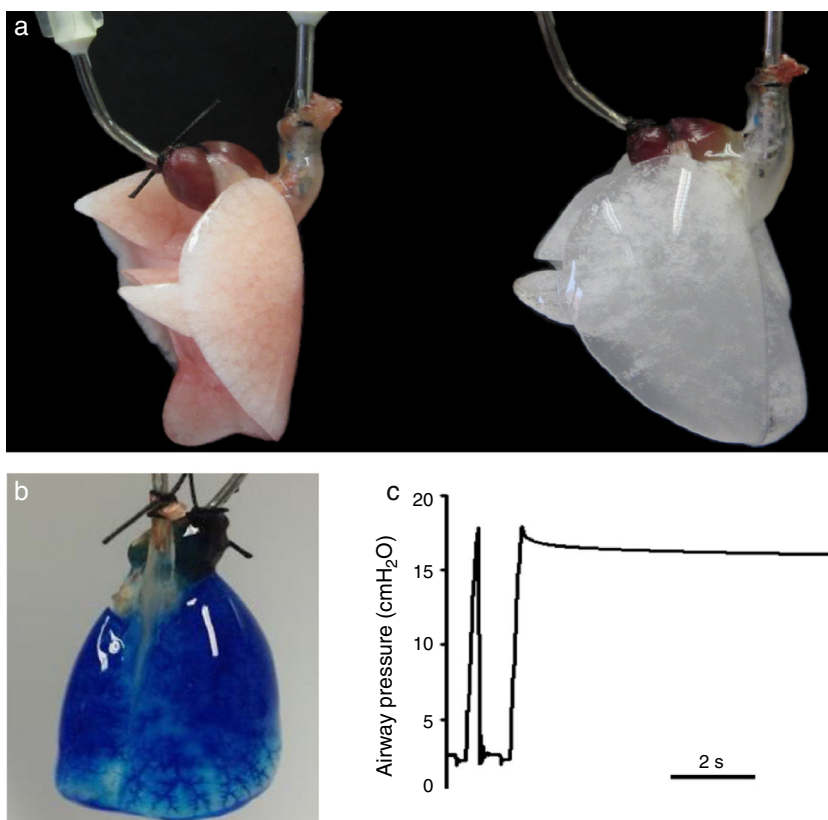
of  $\sim 3$  L. Given that so far there is no way to artificially fabricate such a micron-scale resolution scaffold, the current procedure for bioengineering complex organs such as the lung is to use the natural scaffold of a decellularized natural organ.

Lung decellularization is carried out by combining different steps: physical challenges (osmotic shock, sonication, freezing–thawing) to break cell membranes, enzymatic agents (trypsin, endo- and exo-nucleases) for disrupting cell components and detergents (ionic, non-ionic or zwitterionic) for washing the cell debris.<sup>9,10</sup> The ideal decellularization process would require a difficult balance since it should be sufficiently strong to eliminate all cell components and smooth enough to leave all ECM components intact. Although which is the ideal lung decellularization protocol is unknown, several procedures providing suitable acellular scaffolds have been described. Fig. 2A shows an example of a rat lung before and after decellularization. The acellular lung exhibits the characteristic white-translucent aspect of most decellularized organs. Fig. 2B illustrates that the vascular circuit of a decellularized lung remains intact, which is also reflected by the fact that pulmonary vascular resistance after decellularization is similar that in the native lung.<sup>11,12</sup> Moreover, the acellular lung can be ventilated normally and after application of a post-inspiratory pause the lung remains pressurized without air leaks, indicating that the airway tree remains functional (Fig. 2C), with mechanical properties (resistance and compliance) similar in native and acellular lungs.<sup>13–15</sup>

Acellular scaffolds, only composed by ECM components and freed from donor DNA, would have no major immunogenic potential for the receptor. However, whether molecular components remaining in the acellular scaffold after decellularization may elicit positive or negative immune response in the host is currently a subject of research.<sup>16</sup> Importantly, in addition to providing an almost perfect physical 3D structure to rebuild the lung, the acellular scaffold also provides the cells with optimal physico-chemical cues. For instance, in the case of lung biofabrication cells seeded on the bronchi, alveoli or endothelial walls will sense the corresponding native composition and mechanical properties which are expected to be optimal for cell differentiation into the specific bronchial, epithelial or endothelial phenotypes, respectively.

#### Bioreactors for Lung Biofabrication

As any conventional bioreactor for cell culture, the one used for organ biofabrication should ensure biological safety, control of temperature and of  $O_2$  and  $CO_2$  partial pressures, provide growth media and nutrients and allow waste elimination. However, the setting devised for organ bioengineering should also provide the cell-seeded scaffold with perfusion of media through the scaffold vasculature to ensure whole organ normoxia, normocapnia, distribution of nutrients and collection of metabolic waste products. A fundamental additional feature of a bioreactor for organ



**Fig. 2.** (a) Rat lung before (left) and after (right) decellularization. (b) Decellularized rat lung a short time after starting perfusion with blue dye through the pulmonary artery. The perfusate has almost distributed along the lung, and is getting the microvessels at the basal area. (c) Tracheal pressure in a decellularized rat lung subjected to mechanical ventilation. The image shows a data section showing one ventilation cycle followed by a post-inspiratory pause. See text for explanations. Figures from results of the authors' lab.

bioengineering is that it must provide the physical stimuli corresponding to the organ physiology. For instance, electrical stimuli in case that muscle cells are involved (e.g. skeletal muscle, heart), mechanical compression/traction in musculoskeletal constructs (e.g. cartilage, tendon, bone, muscle) or cyclic stretch in organs involving mechanical pumping (e.g. heart, lung).<sup>17–21</sup> Mechanical<sup>22</sup> and oxygenation<sup>23</sup> stimuli are important since it has been shown that they can contribute to the suitable differentiation of cells and thus to modulate the maturation of the organ within the bioreactor.<sup>24,25</sup>

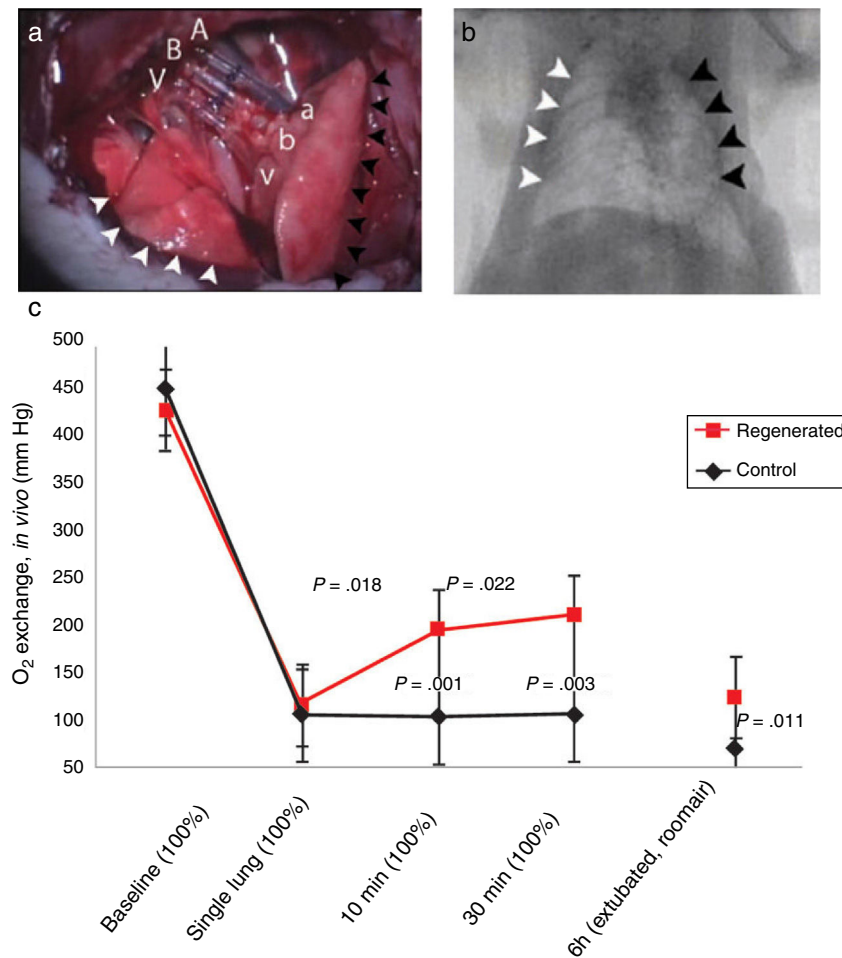
In the particular case of lung bioreactors the organ should be subjected to controlled perfusion, ventilation and gas exchange. In fact, the bioreactor should be similar to the classical setting for *ex vivo* lung experiments or to the devices for preserving lungs for transplantation. Perfusion of media through the pulmonary artery can be constant or pulsatile. In the first case the cells lining the vessel wall are subjected to constant shear stress whereas in the second case, closer to the physiological situation, shear stress is pulsatile and cells also experience cyclic stretch. Ventilation can be provided by positive pressure at the airway opening or by negative pressure around the pleura, in both cases with a level of positive end-expiratory pressure ensuring a physiological lung volume. Adjusting the tidal volume and ventilation frequency modulates the cyclic stretch experienced by cells in the airway and alveoli. The partial pressures of O<sub>2</sub> and CO<sub>2</sub> in the air and in the media within the bioreactor should be controlled. However, determining which are the best modes of perfusion (constant vs pulsatile, pressure vs flow control) and ventilation (positive vs negative pressure) for optimizing lung biofabrication is still an open question.

## Status of Lung Biofabrication

### Proof of Concept

Seminal works published in 2010 by Petersen et al.<sup>26</sup> and Ott et al.<sup>27</sup> provided proof of concept that biofabricating a functional lung by culturing a cell-seeded acellular scaffold in a bioreactor is feasible. In both independent studies the authors used decellularized rodent lungs and adult endothelial and epithelial cells for seeding the vascular and airway trees of the organ scaffold, respectively. After several days of maturation in a bioreactor providing lung perfusion and ventilation, the biofabricated lungs were orthotopically transplanted, showing *in vivo* participation in gas exchange for a few hours (Fig. 3). Interestingly, just one year later one of these teams reported data obtained along 14 days after transplantation of bioengineered lungs in rats.<sup>28</sup> Fig. 4A illustrates that, after 24 h of transplantation, bioengineered lungs exhibited a compliance, and thus inflation capacity, similar to the contralateral native lung, although their performance considerably decreased 14 days after transplantation (Fig. 4B). Remarkably, these authors found that the engineered grafts provided gas exchange *in vivo* for 7 days.<sup>28</sup>

Also in 2010, Cortiella et al.<sup>29</sup> published a relevant paper pointing out that stem cells, instead of adult differentiated cells, could be used for lung biofabrication. They seeded murine embryonic stem cells into acellular lung scaffolds and observed that, during their differentiation, these cells produced *de novo* extracellular matrix components. These authors also detected a tendency to site-specific stem cell differentiation. Indeed, cells homing on the acellular trachea and bronchi walls expressed epithelial cell markers and



**Fig. 3.** Orthotopic transplantation of a bioengineered rodent lung. (a) Photograph showing the implanted regenerated left lung. Recipient left pulmonary artery (A), left main bronchus (B) and left pulmonary vein (V) are connected to regenerated left lung pulmonary artery (a), bronchus (b) and pulmonary vein (v). White arrowheads, the recipient's right lung (infracardiac and right lower lobe); black arrowheads, the regenerated left lung construct. (b) Radiograph: white arrowheads, recipient's right lung; black arrowheads, regenerated left lung construct. (c) Blood gas analyses showing decrease in arterial oxygen tension (PaO<sub>2</sub>) after left pneumonectomy and partial recovery after orthotopic transplantation of a regenerated left lung construct. Baseline, single lung, 10 min and 30 min measurements were obtained with the rat intubated and ventilated at volume control ventilation; 6 h measurements were obtained with the rat extubated and breathing room air without support of a ventilator. Upper  $P$  values compare single lung ventilation to 5 min, and 30 min time points after transplantation. Lower  $P$  values compare pneumonectomy to transplantation at 5 min, 30 min and 6 h time points after operation. Data are mean and SD.

Source: Reproduced from Ref. 27, with permission of the copyright owner of Nature Medicine.

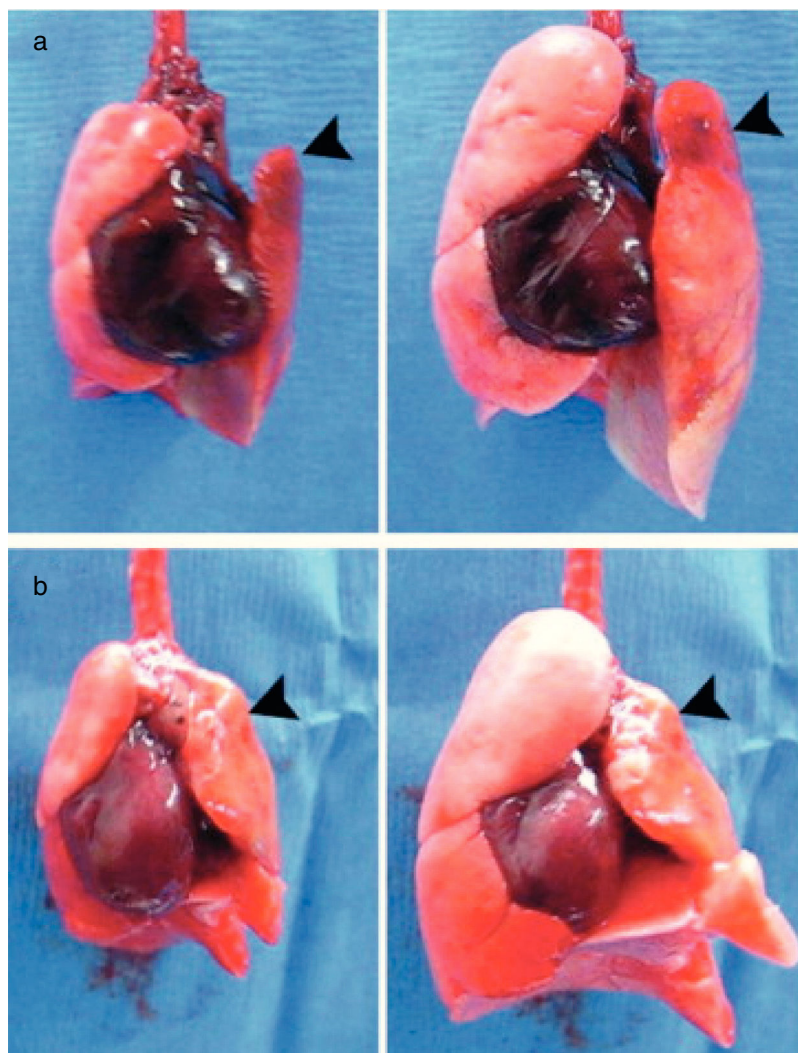
some of them exhibited cilia. Moreover, formation of very simple capillary-like networks suggested differentiation into endothelial phenotype. This work highlighted the concept that acellular lung scaffolds maintain signaling cues able to direct the fate of stem cells to lung phenotypes.

#### Recent Methodological Progress

In the years following the 2010 breakthroughs,<sup>26,27,29</sup> the topic raised clinical interest<sup>30–32</sup> and researchers have focused into the many key questions open by these works. Some studies have focused on characterizing the lung scaffold and on the decellularization process. On the one hand, the local viscoelastic properties of the different sections in the lung scaffold have been mapped, showing four-fold differences within different compartments (e.g. pleura, alveolar septum, tunica media and intima in lung vessels)<sup>33,34</sup> that could be relevant for local stem cell differentiation. On the other hand, how the properties of the acellular scaffold depend on the decellularization process has been investigated. For instance, comparing pressure vs controlled perfusion of

decellularizing media, decellularization via tracheal vs pulmonary artery, or studying the effects of different detergents and of pH.<sup>11,35</sup> Moreover, different procedures that can be relevant for future standardization and clinical application have also been addressed. For instance, the effects of freezing-thawing<sup>14</sup> and sterilizing the lung scaffold,<sup>15</sup> or how the acellular lung can be affected if the donor has a disease affecting the lung ECM.<sup>36–39</sup> Also, a device for automatic decellularization of human-sized lungs has been described.<sup>40</sup>

Some other technically-oriented research in recent years has focused on optimizing the bioreactor for lung biofabrication. It has been suggested that negative pressure ventilation could be preferable for improving cell survival and secretion clearance in the epithelium, improving oxygenation and reducing lung injury.<sup>26</sup> However, whether positive or negative pressure ventilation is better remains to be fully elucidated. Recent research has been focused on developing clinical-scale bioreactors<sup>41</sup> able to apply realistic oscillatory perfusion through the pulmonary artery and negative pressure ventilation mimicking thoracic cage expansion to large (human and porcine) lungs under biofabrication. For instance, a



**Fig. 4.** Examples of bioartificial rat lung explants after transplantation. (a) Isolated heart and lung en bloc resection of a bioartificial lung transplant recipient, ventilated through trachea, on inflation (left) and deflation (right) 24 h after transplantation. Black arrow marks the transplanted bioartificial left lung. (b) Isolated heart and lung en bloc resection 14 days after transplantation, inflated (left), and deflated (right), black arrowhead marking the transplanted bioartificial left lung. Source: Reproduced from Ref. 28, with permission of the copyright owner of Annals of Thoracic Surgery.

novel bioreactor sealing the lung compartment by a silicone membrane mimicking the pleura and allowing application of negative pressure.<sup>42</sup>

#### Recent Advances in Re-cellularizing Biofabricated Lungs

Significant advances in our knowledge of how different types of cells improve the biological structure and function of the bioengineered lung have been reported in the last few years. In view of future clinical application, the interest has been focused on autologous cells: either stem/progenitor cells directly collected or iPSCs obtained by reprogramming differentiated cells. Although MSCs offer a relatively limited differentiation capacity, their use in lung biofabrication has not been discarded. In fact, it was reported that bone marrow-derived MSCs seeded in acellular lungs transiently expressed lung precursor markers in different regions rich in fibronectin, collagen types I and IV and laminin.<sup>43</sup> Moreover, after culturing human adipose tissue-derived and human bone marrow-derived MSCs on rat lung scaffolds, pro-surfactant protein C and Club-like cells were observed.<sup>44</sup>

Positive results have been recently obtained when using iPSCs for lung biofabrication. These cells can be optimally differentiated

into type I epithelial cells.<sup>45</sup> When iPSC-derived alveolar epithelial type II cells were used, diffuse repopulation of alveolar lung structures and epithelial lung cell markers were observed.<sup>46</sup> Moreover, Gilpin et al.<sup>47</sup> used human iPSCs-derived endothelial cells and iPSCs-derived epithelial progenitor cells seeded via pulmonary artery and trachea, respectively, and found mature lung phenotypes identified by expression of different specific markers. Furthermore, Ren et al.<sup>48</sup> obtained interesting results when addressing the issue of vascular endothelization. By seeding decellularized lungs with human endothelial and perivascular cells derived from iPSCs they found that the vascular resistance and barrier function of the new endothelium was optimized *in vitro*, and 3 days after transplantation of the lung graft in rats the vessels remained patent.

Interestingly, the focus has also been placed on progenitor cells from the lung, as these cells could be particularly suitable for differentiating into lung phenotypes. Nichols et al.<sup>49</sup> have recently reported that bioengineering pediatric lung scaffolds employing immortalized primary lung-derived vascular, epithelial and tracheal/bronchial cells, resulted in lungs with normal static compliance and with whole organ distribution of alveolar epithelial cells (types I and II), alveolar–capillary junctions and increased collagen I content. Gilpin et al.<sup>50</sup> have bioengineered lungs seeding

cells from a proliferative basal epithelial stem cell population from human lungs on human lung scaffolds and observed extensive recellularization with organized tissue architecture and morphology, and rudimentary gas exchange capacity. In another recent work of the same team,<sup>51</sup> the authors seeded porcine lung scaffolds with human airway epithelial progenitor cells derived from rejected donor lungs and banked human umbilical vein endothelial cells, observing mature endothelial lining. When the bioengineered lungs were transplanted into porcine recipients the grafts exhibited gas exchange.<sup>51</sup>

### Future Perspectives

Lung biofabrication is both a challenge to find a scientific solution and an opportunity for clinical application. Although this multidisciplinary approach is still in its infancy, the preclinical studies published so far strongly support the notion that lungs can be biofabricated. However, considerable experimental work – particularly concerning cell selection and differentiation – is still pending until first trials in humans could be proposed. From a scientific viewpoint, it is interesting to note that much of the knowledge achieved in the research for lung biofabrication – namely, how progenitor cells interact with the ECM environment and differentiate into lung phenotypes – is also of great interest to better understand the process of lung repair in acute lung injury and acute distress syndrome and thus to discover therapies for these severe respiratory diseases.

When developing a new therapeutic approach it is important that, in addition to basic scientific advancements, practical translational issues – e.g. legal regulatory framework, technological/industrial challenges – are addressed.<sup>52–54</sup> The regulatory issues concerning organ biofabrication are not easy.<sup>55,56</sup> Indeed, given its novelty and interdisciplinary nature, biofabricated organs are difficult to classify according to the classical categories of medical devices or cell products, and hence the legal framework is progressively being developed by both USA and European regulatory bodies. From the industrial perspective, translating organ bioengineering from the current preclinical stage to clinical application will face several main challenges, including how to strictly control the starting materials (cells and scaffolds), how to guarantee the reliability and reproducibility of the production process, how to scale production to a relevant size and how to logistically organize distribution of medical-grade living products from production factories to clinical end-users.<sup>57</sup>

From a clinical translational viewpoint, it is likely that future trials on lung biofabrication will be carried out in a way slightly different from the one in experimental studies so far. Indeed, instead trying to directly replace whole lungs, it will be possible to start testing transplantation of one single bioengineered lung lobe. First tests could also be performed not directly transplanting the bioengineered construct but using it extracorporeally as a transient therapy, similarly as conventional extracorporeal membrane oxygenation. Importantly, the field of lung biofabrication should learn from previous disruptive methodologies in medicine that generated some deception after excessive initial expectations. A wise balance between skepticism and enthusiasm will certainly result in a progressive and solid advance in the goal of helping to increase the availability of lungs for transplantation.

### Conflict of Interests

The authors declare that they have no conflict of interest.

### Acknowledgements

This work was supported in part by the Spanish Ministry of Economy and Competitiveness (Instituto de Salud Carlos III; FIS-PI14/00004, FIS-PI14/00280). This work was partially funded by the CERCA Program of Generalitat de Catalunya.

### References

1. Popov AF, Sabashnikov A, Patil NP, Zerriouh M, Mohite PN, Zych B, et al. Ex vivo lung perfusion – state of the art in lung donor pool expansion. *Med Sci Monit Basic Res.* 2015;21:9–14.
2. Schmack B, Weymann A, Mohite P, Garcia Saez D, Zych B, Sabashnikov A, et al. Contemporary review of the organ care system in lung transplantation: potential advantages of a portable ex-vivo lung perfusion system. *Expert Rev Med Devices.* 2016;13:1035–41.
3. Cypel M, Levvey B, Van Raemdonck D, Erasmus M, Dark J, Love R, et al. International Society for Heart and Lung Transplantation Donation After Circulatory Death Registry Report. *J Heart Lung Transplant.* 2015;34:1278–82.
4. Franks TJ, Colby TV, Travis WD, Tuder RM, Reynolds HY, Brody AR, et al. Resident cellular components of the human lung: current knowledge and goals for research on cell phenotyping and function. *Proc Am Thorac Soc.* 2008;5:763–6.
5. Carletti E, Motta A, Migliaresi C. Scaffolds for tissue engineering and 3D cell culture. *Methods Mol Biol.* 2011;695:17–39.
6. O'Brien FJ. Biomaterials & scaffolds for tissue engineering. *Mater Today.* 2011;14:88–95.
7. Tang Z, Okano T. Recent development of temperature-responsive surfaces and their application for cell sheet engineering. *Regen Biomater.* 2014;1:91–102.
8. Mir TA, Nakamura M. Three-dimensional bioprinting: toward the era of manufacturing human organs as spare parts for healthcare and medicine. *Tissue Eng B.* 2017;23:45–256.
9. Badyal SF, Taylor D, Uygun K. Whole-organ tissue engineering: decellularization and recellularization of three-dimensional matrix scaffolds. *Annu Rev Biomed Eng.* 2011;13:27–53.
10. Keane TJ, Swinehart IT, Badyal SF. Methods of tissue decellularization used for preparation of biologic scaffolds and in vivo relevance. *Methods.* 2015;84:25–34.
11. Palma RK, Campillo N, Uriarte JJ, Oliveira LFF, Navajas D, Farré R. Pressure- and flow-controlled media perfusion differently modify vascular mechanics in lung decellularization. *J Mech Behav Biomed Mater.* 2015;49:69–79.
12. Palma RK, Nonaka PN, Campillo N, Uriarte JJ, Urbano JJ, Navajas D, et al. Behavior of vascular resistance undergoing various pressure insufflation and perfusion on decellularized lungs. *J Biomech.* 2016;49:1230–2.
13. Nonaka PN, Uriarte JJ, Campillo N, Melo E, Navajas D, Farré R, et al. Mechanical properties of mouse lungs along organ decellularization by sodium dodecyl sulfate. *Respir Physiol Neurobiol.* 2014;200:1–5.
14. Nonaka PN, Campillo C, Uriarte JJ, Garreta E, Melo E, de-Oliveira LVF, et al. Effects of freezing/thawing on the mechanical properties of decellularized lungs. *J Biomed Mater Res A.* 2014;102:413–9.
15. Uriarte JJ, Nonaka PN, Campillo N, da Palma RK, Melo E, Oliveira LV, et al. Mechanical properties of acellular mouse lungs after sterilization by gamma irradiation. *J Mech Behav Biomed Mater.* 2014;40:168–77.
16. Dziki JL, Huleihel L, Scarritt ME, Badyal SF. Extracellular matrix bioscaffolds as immunomodulatory biomaterials. *Tissue Eng A.* 2017. <http://dx.doi.org/10.1089/ten.TEA.2016.0538>, in press.
17. Thirivikraman G, Madras G, Basu B. Intermittent electrical stimuli for guidance of human mesenchymal stem cell lineage commitment towards neural-like cells on electroconductive substrates. *Biomaterials.* 2014;35:6219–35.
18. Ito A, Yamamoto Y, Sato M, Ikeda K, Yamamoto M, Fujita H, et al. Induction of functional tissue-engineered skeletal muscle constructs by defined electrical stimulation. *Sci Rep.* 2014;4:4781.
19. Ribeiro C, Pärssinen J, Sencadas V, Correia V, Miettinen S, Hytönen VP, et al. Dynamic piezoelectric stimulation enhances osteogenic differentiation of human adipose stem cells. *J Biomed Mater Res A.* 2015;103:2172–5.
20. Zhang Y, Chen S, Pei M. Biomechanical signals guiding stem cell cartilage engineering: from molecular adaption to tissue functionality. *Eur Cell Mater.* 2016;31:59–78.
21. Guo T, Yu L, Lim CG, Goodley AS, Xiao X, Placone JK, et al. Effect of dynamic culture and periodic compression on human mesenchymal stem cell proliferation and chondrogenesis. *Ann Biomed Eng.* 2016;44:2103–13.
22. Engler AJ, Sen S, Sweeney HL, Discher DE. Matrix elasticity directs stem cell lineage specification. *Cell.* 2006;126:677–89.
23. Garreta E, Melo E, Navajas D, Farré R. Low oxygen tension enhances the generation of lung progenitor cells from mouse embryonic and induced pluripotent stem cells. *Physiol Rep.* 2014;2.
24. Schilders KA, Eenjes E, van Riet S, Poot AA, Stamatis D, Truckenmüller R, et al. Regeneration of the lung: lung stem cells and the development of lung mimicking devices. *Respir Res.* 2016;17:44.
25. Nonaka PN, Uriarte JJ, Campillo N, Oliveira VR, Navajas D, Farré R. Lung bioengineering: physical stimuli and stem/progenitor cell biology interplay towards biofabricating a functional organ. *Respir Res.* 2016;17:161.
26. Petersen TH, Calle EA, Zhao L, Lee EJ, Gui L, Raredon MB, et al. Tissue-engineered lungs for in vivo implantation. *Science.* 2010;329:538–41.

27. Ott HC, Clippinger B, Conrad C, Schuetz C, Pomerantseva I, Ikonomidou L, et al. Regeneration and orthotopic transplantation of a bioartificial lung. *Nat Med*. 2010;16:927–33.
28. Song JJ, Kim SS, Liu Z, Madsen JC, Mathisen DJ, Vacanti JP, et al. Enhanced in vivo function of bioartificial lungs in rats. *Ann Thorac Surg*. 2011;92:998–1006.
29. Cortiella J, Niles J, Cantu A, Brettler A, Pham A, Vargas G, et al. Influence of acellular natural lung matrix on murine embryonic stem. Cell differentiation and tissue formation. *Tissue Eng A*. 2010;16:2565–80.
30. Chapman HA. Toward lung regeneration. *N Engl J Med*. 2011;364:19–20.
31. Soto-Gutierrez A, Wertheim JA, Ott HC, Gilbert TW. Perspectives on whole-organ assembly: moving toward transplantation on demand. *J Clin Invest*. 2012;122:3817–23.
32. Badylak SF, Weiss DJ, Caplan A, Macchiarini P. Engineered whole organs and complex tissues. *Lancet*. 2012;379:943–52.
33. Luque T, Melo E, Garreta E, Cortiella J, Nichols J, Farré R, et al. Local micromechanical properties of decellularized lung scaffolds measured with atomic force microscopy. *Acta Biomater*. 2013;9:6852–9.
34. Melo E, Garreta E, Luque T, Cortiella J, Navajas D, et al. Effects of the decellularization method on the local stiffness of acellular lungs. *Tissue Eng C*. 2014;20:412–22.
35. Tsuchiya T, Balestrini JL, Mendez J, Calle EA, Zhao L, Niklason LE. Influence of pH on extracellular matrix preservation during lung decellularization. *Tissue Eng C Methods*. 2014;20:1028–36.
36. Sokocevic D, Bonenfant NR, Wagner DE, Borg ZD, Lathrop MJ, Lam YW, et al. The effect of age and emphysematous and fibrotic injury on the re-cellularization of de-cellularized lungs. *Biomaterials*. 2013;34:3256–69.
37. Wagner DE, Bonenfant NR, Parsons CS, Sokocevic D, Brooks EM, Borg ZD, et al. Comparative decellularization and recellularization of normal versus emphysematous human lungs. *Biomaterials*. 2014;35:3281–97.
38. Melo E, Cardenes N, Garreta E, Luque T, Rojas M, Navajas D, et al. Inhomogeneity of local stiffness in the extracellular matrix scaffold of fibrotic mouse lungs. *J Mech Behav Biomed Mater*. 2014;37:186–95.
39. Uriarte JJ, Nonaka PN, Campillo N, Mendizabal Y, Sarri E, Egea G, et al. Early impairment of lung mechanics in a murine model of Marfan syndrome. *PLoS One*. 2016;11:e0152124.
40. Price AP, Godin LM, Domek A, Cotter T, D’Cunha J, Taylor DA, et al. Automated decellularization of intact human-sized lungs for tissue eng. *Tissue Eng C*. 2014;21:94–103.
41. Charest JM, Okamoto T, Kitano K, Yasuda A, Gilpin SE, Mathisen DJ, et al. Design and validation of a clinical-scale bioreactor for long-term isolated lung culture. *Biomaterials*. 2015;52:79–87.
42. Raredon MS, Rocco KA, Gheorghie CP, Sivarapatna A, Ghaedi M, Balestrini JL, et al. Biomimetic culture reactor for whole-lung engineering. *Biores Open Access*. 2016;5:72–83.
43. Daly AB, Wallis JM, Borg ZD, Bonvillain RW, Deng B, Ballif BA, et al. Initial binding and recellularization of decellularized mouse lung scaffolds with bone marrow-derived mesenchymal stromal cells. *Tissue Eng A*. 2012;18:1–16.
44. Mendez JJ, Ghaedi M, Steinbacher D, Niklason LE. Epithelial cell differentiation of human mesenchymal stromal cells in decellularized lung scaffolds. *Tissue Eng A*. 2014;20:1735–46.
45. Ghaedi M, Mendez JJ, Bove PF, Sivarapatna A, Raredon MS, Niklason LE. Alveolar epithelial differentiation of human induced pluripotent stem cells in a rotating bioreactor. *Biomaterials*. 2014;35:699–710.
46. Ghaedi M, Calle EA, Mendez JJ, Gard AL, Balestrini J, Booth A, et al. Human iPSC cell-derived alveolar epithelium repopulates lung extracellular matrix. *J Clin Invest*. 2013;123:4950–62.
47. Gilpin SE, Ren X, Okamoto T, Guyette JP, Mou H, Rajagopal J, et al. Enhanced lung epithelial specification of human induced pluripotent stem cells on decellularized lung matrix. *Ann Thorac Surg*. 2014;98:1721–9.
48. Ren X, Moser PT, Gilpin SE, Okamoto T, Wu T, Tapias LF, et al. Engineering pulmonary vasculature in decellularized rat and human lungs. *Nat Biotechnol*. 2015;33:1097–102.
49. Nichols JE, La Francesca S, Vega SP, Niles JA, Argueta LB, Riddle M, et al. Giving new life to old lungs: methods to produce and assess whole human paediatric bioengineered lungs. *J Tissue Eng Regen Med*. 2017;11:2136–52.
50. Gilpin SE, Charest JM, Ren X, Tapias LF, Wu T, Evangelista-Leite D, et al. Regenerative potential of human airway stem cells in lung epithelial engineering. *Biomaterials*. 2016;108:111–9.
51. Zhou H, Kitano K, Ren X, Rajab TK, Wu M, Gilpin SE, et al. Bioengineering human lung grafts on porcine matrix. *Ann Surg*. 2016. <http://dx.doi.org/10.1097/SLA.0000000000002129>, in press.
52. Mironov V, Trusk T, Kasyanov V, Little S, Swaja R, Markwald R. Biofabrication: a 21st century manufacturing paradigm. *Biofabrication*. 2009;1:022001.
53. Hunsberger J, Neubert J, Wertheim JA, Allickson J, Atala A. Bioengineering priorities on a path to ending organ shortage. *Curr Stem Cell Rep*. 2016;2:118–27.
54. Ronfard V, Vertès AA, May MH, Dupraz A, van Dyke ME, Bayon Y. Evaluating the past present, and future of regenerative medicine: a global view. *Tissue Eng B Rev*. 2017;23:199–210.
55. Pirnay JP, Vanderkelen A, De Vos D, Draye JP, Rose T, Ceulemans C, et al. Business oriented EU human cell and tissue product legislation will adversely impact Member States’ health care systems. *Cell Tissue Bank*. 2013;14:525–60.
56. Scarratt ME, Pashos NC, Bunnell BA. A review of cellularization strategies for tissue engineering of whole organs. *Front Bioeng Biotechnol*. 2015;3:43.
57. Berthiaume F, Maguire TJ, Yarmush ML. Tissue engineering and regenerative medicine: history, progress, and challenges. *Annu Rev Chem Biomol Eng*. 2011;2:403–30.