

## Original Article

## Clinical Characteristics and Prognosis of Pulmonary Embolism Caused by Economy Class Syndrome<sup>☆</sup>



María Abellás,<sup>a</sup> Ana Menéndez,<sup>b</sup> Raquel Morillo,<sup>c</sup> Luis Jara-Palomares,<sup>d</sup> Deisy Barrios,<sup>c</sup> Rosa Nieto,<sup>c</sup> Esther Barbero,<sup>c</sup> Jesús Corres,<sup>e</sup> Pedro Ruiz-Artacho,<sup>f</sup> David Jiménez<sup>c,\*</sup>

<sup>a</sup> Servicio de Cardiología, Hospital Ramón y Cajal, IRYCIS, Madrid, Spain

<sup>b</sup> Medicina Familiar y Comunitaria, Hospital Ramón y Cajal, IRYCIS, Madrid, Spain

<sup>c</sup> Servicio de Neumología, Hospital Ramón y Cajal, Universidad de Alcalá, IRYCIS, Madrid, Spain

<sup>d</sup> Unidad Médico-Quirúrgica de Enfermedades Respiratorias, Servicio de Neumología, Hospital Universitario Virgen del Rocío, CIBERES, Sevilla, Spain

<sup>e</sup> Servicio de Urgencias, Hospital Ramón y Cajal, IRYCIS, Madrid, Spain

<sup>f</sup> Servicio de Urgencias, Hospital Clínico San Carlos, IdISSC, Madrid, Spain

## ARTICLE INFO

## Article history:

Received 5 December 2016

Accepted 18 February 2017

Available online 24 July 2017

## Keywords:

Pulmonary embolism

Economy-class syndrome

Prognosis

## ABSTRACT

**Objective:** Clinical presentation and short-term prognosis of patients with travel-associated acute pulmonary embolism (PE) (i.e., economy class syndrome [ECS]) is not well understood.

**Methods:** In this retrospective cohort study of patients with acute PE identified from a single center registry, we assessed the clinical presentation and the association between ECS and the outcomes of all-cause mortality, PE-related mortality, nonfatal venous thromboembolism and nonfatal major bleeding rates through 30 days after initiation of PE treatment.

**Results:** Of the 2333 patients with acute symptomatic PE, 124 (5.3%; 95% confidence interval, 4.4%–6.3%) had ECS. Patients with ECS were younger and had fewer comorbid diseases (recent bleeding, chronic obstructive pulmonary disease, congestive heart failure), but they presented with more signs of clinical severity (syncope [48% vs 14%;  $P<.001$ ], tachycardia [37% vs 21%;  $P<.001$ ], right ventricular dysfunction [31% vs 19%;  $P<.01$ ] and myocardial injury [57% vs 28%;  $P<.001$ ]) compared to those without ECS. Regression analyses showed a significantly lower risk of all-cause mortality for patients with ECS compared to patients without ECS (1.6% vs 9.6%;  $P<.01$ ). We did not detect a difference in PE-related mortality at 30 days between those with and those without ECS (0.8% vs 3.1%;  $P=.18$ ).

**Conclusions:** PE patients with ECS are younger and have fewer comorbid diseases compared to those without ECS. Though they present with more signs of clinical severity, their short-term prognosis is excellent.

© 2017 SEPAR. Published by Elsevier España, S.L.U. All rights reserved.

### Características clínicas y pronóstico de la tromboembolia pulmonar secundaria al síndrome de clase turista

## RESUMEN

**Objetivo:** No se conocen suficientemente las características clínicas y el pronóstico de los pacientes con tromboembolia de pulmón (TEP) aguda sintomática asociada a los viajes prolongados (síndrome de clase turista [SCT]).

**Métodos:** Se analizaron retrospectivamente las características basales de los pacientes con TEP aguda y se estratificaron según el factor de riesgo desencadenante. Se determinaron la mortalidad por todas las causas, la mortalidad por la propia TEP, las recurrencias trombóticas no fatales y los sangrados mayores no fatales durante los primeros 30 días de seguimiento.

## Palabras clave:

Tromboembolia de pulmón

Síndrome de clase turista

Pronóstico

<sup>☆</sup> Please cite this article as: Abellás M, Menéndez A, Morillo R, Jara-Palomares L, Barrios D, Nieto R, et al. Características clínicas y pronóstico de la tromboembolia pulmonar secundaria al síndrome de clase turista. Arch Bronconeumol. 2017;53:495–500.

\* Corresponding author.

E-mail address: [djimenez.hrc@gmail.com](mailto:djimenez.hrc@gmail.com) (D. Jiménez).

**Resultados:** De los 2.333 pacientes incluidos, un total de 124 (5,3%; intervalo de confianza del 95%: 4,4–6,3) fueron diagnosticados de TEP secundaria a SCT. Estos pacientes fueron más jóvenes, presentaron menos frecuentemente comorbilidad y más frecuentemente síncope (48% vs 14%;  $p<0,001$ ), taquicardia (37% vs 21%;  $p<0,001$ ), disfunción de ventrículo derecho (VD) (31% vs 19%;  $p<0,01$ ) y daño miocárdico (57% vs 28%;  $p<0,001$ ) que los demás pacientes con TEP. La mortalidad por todas las causas a 30 días fue significativamente menor para los pacientes con TEP secundaria a SCT (1,6% vs 9,6%;  $p<0,01$ ). La mortalidad a 30 días por TEP no fue diferente entre los dos grupos de pacientes (0,8% vs 3,1%;  $p=0,18$ ).

**Conclusiones:** Los pacientes con TEP y SCT son más jóvenes y tienen menos comorbilidad que los demás pacientes con TEP. Aunque se presentan más frecuentemente con disfunción de VD y daño miocárdico, el pronóstico a corto plazo es excelente.

© 2017 SEPAR. Publicado por Elsevier España, S.L.U. Todos los derechos reservados.

## Introduction

Pulmonary embolism (PE) is a disease with a wide spectrum of clinical manifestations, prognoses, and treatments.<sup>1</sup> Depending on the patient's hemodynamic status and right ventricular function at the time of diagnosis, the disease is classified as *high risk* PE (formerly called massive PE), which is characterized by the presence of arterial hypotension or shock, *intermediate risk* PE (formerly submassive PE) that occurs in normotensive patients with right ventricular dysfunction and myocardial damage, or *low risk* PE, in which the patient is hemodynamically stable and right ventricular function is normal.<sup>2–4</sup>

However, the short-term prognosis of patients with acute symptomatic PE depends not only on the severity of the presentation of the PE, but also on the patient's baseline characteristics and the factor that triggered the thrombotic event. For example, patients with PE associated with cancer have a significantly poorer prognosis than patients with PE due to medical immobilization,<sup>5</sup> while patients with PE due to major surgery have the best short-term prognosis.<sup>6</sup> Several studies have shown that prolonged air travel (economy class syndrome [ECS]) is a risk factor for acute symptomatic PE.<sup>7–9</sup> However, the clinical presentation and the short-term prognosis of patients with ECS is still poorly defined.

The aim of this study was to analyze the baseline characteristics of a cohort of patients with acute symptomatic PE, stratified according to the causative risk factor (ECS vs others). We also compared the short-term prognosis of patients with PE due to ECS with that of patients with idiopathic PE, or PE caused by cancer, immobilization, or surgery.

## Method

### Design

We conducted an observational, retrospective study to examine the baseline characteristics and short-term prognosis of a cohort of patients with stable and unstable acute symptomatic PE.

### Patients and Selection Criteria

All patients with a diagnosis of symptomatic acute PE from the emergency department of the Hospital Ramon y Cajal (Madrid, Spain) between January 2003 and June 2016 were included consecutively. The diagnosis of PE was confirmed by computed tomography (CT) angiography findings of a partial or complete intraluminal defect surrounded by contrast medium or complete occlusion of a pulmonary artery in 2 consecutive CT slices.<sup>10</sup> PE was diagnosed by ventilation/perfusion scintigraphy in patients with a high probability of PE according to PLOPED criteria<sup>11</sup> (at least 1 segmental perfusion defect or 2 subsegmental defects with normal ventilation), or with clinical suspicion of PE, an inconclusive scintigraphy and diagnostic ultrasound of the lower limbs showing

incomplete compressibility of the venous lumen as a sign of deep vein thrombosis (DVT).<sup>12</sup>

### Interventions

Patients received low molecular weight heparin (LMWH) at weight-adjusted doses every 12 h for at least 5 days. Vitamin K antagonists were started along with LMWH between day 1 and day 3 of treatment, and LMWH was suspended when the international normalized ratio (INR) was stable and greater than 2.0. INR levels were monitored in accordance with the local practices of the center.

Recanalization treatment (thrombolytics, fragmentation or embolectomy) was used in hemodynamically unstable patients at the discretion of the treating physician. In general, mechanical fragmentation and embolectomy were reserved for unstable patients with contraindications for thrombolysis. A vena cava filter was inserted in patients with contraindication for anticoagulation (active bleeding or high risk of bleeding).

### Definitions According to Causative Factor

Study patients were classified into one or more of the following groups: ECS, in patients who had made a journey of more than 4 h duration in the month before the diagnosis of PE, irrespective of the mode of transport. Cancer, active or in treatment, in the year prior to the diagnosis of PE. Surgery in the month prior to the diagnosis of PE. Immobilization, in non-surgical patients bedridden for 4 or more days in the month prior to the diagnosis of PE. Pregnancy, postpartum period, use of oral contraceptives in the month prior to the diagnosis of PE. Idiopathic, in the absence of any of the above-mentioned triggers.

### Study Episodes

The primary endpoint was defined as all-cause mortality in the month prior to diagnosis. Secondary endpoints were death due to the PE itself, objectively confirmed non-fatal thromboembolic relapse, and non-fatal major bleeding in the month following diagnosis.

Diagnostic criteria of non-fatal thrombotic recurrence were the presence of a new intraluminal defect on CT angiogram, or a new ventilation/perfusion defect on lung scintigraphy; new non-compressible venous segment or increase in the diameter of the thrombus by at least 4 mm on lower limb ultrasonography.<sup>13</sup>

Non-fatal major bleeding was defined as bleeding requiring transfusion of at least 2 units of packed red blood cells, bleeding requiring surgery, or brain, retroperitoneal, or joint bleeding.<sup>14</sup>

### Statistical Analysis

Continuous variables were expressed as mean±standard deviation or median (interquartile range), as appropriate, and were

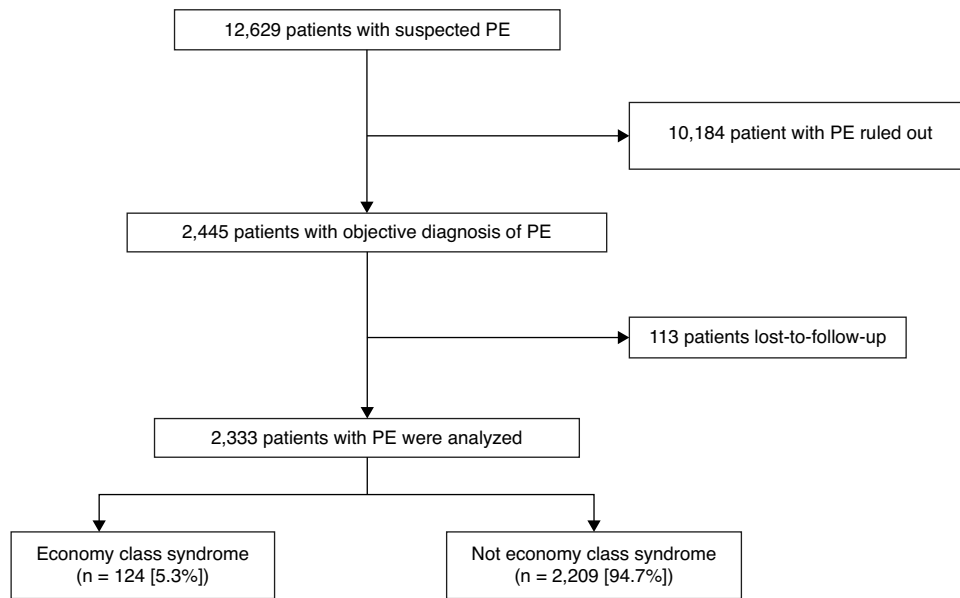


Fig. 1. Study patient flow chart. PE: pulmonary embolism.

**Table 1**  
Baseline Characteristics and Treatment of Study Subjects.<sup>a</sup>

	All n=2333 <sup>b</sup>	Idiopathic n=982	ECS n=124	Cancer n=462	Immobilization n=477	Surgery n=200
<i>Clinical characteristics, n (%)</i>						
Age, years, median (25–75 percentiles)	74 (59–81)	75 (63–82)	54 (44–67)	72 (61–78)	79 (68–86)	68 (52–77)
Age >80 years	624 (27%)	285 (29%)	1 (0.8%)	79 (17%)	210 (44%)	35 (18%)
Male sex	1089 (47%)	510 (52%)	42 (34%)	252 (55%)	178 (37%)	88 (44%)
<i>Comorbidity, n (%)</i>						
History of severe bleeding <sup>c</sup>	74 (3.2%)	19 (1.9%)	0 (0%)	11 (2.4%)	42 (8.8%)	10 (5.0%)
COPD	180 (7.7%)	80 (8.1%)	0 (0%)	32 (6.9%)	53 (11%)	8 (4.0%)
Heart failure	134 (5.7%)	62 (6.3%)	1 (0.8%)	13 (2.8%)	48 (10%)	5 (2.5%)
<i>Signs and symptoms at diagnosis</i>						
Syncope	372 (16%)	156 (16%)	60 (48%)	56 (12%)	74 (16%)	20 (10%)
Chest pain	1019 (44%)	450 (46%)	52 (42%)	174 (38%)	158 (33%)	93 (47%)
Dyspnea	1681 (72%)	706 (72%)	78 (63%)	329 (71%)	363 (76%)	147 (74%)
DVT symptoms	545 (23%)	239 (24%)	24 (19%)	108 (23%)	92 (19%)	34 (17%)
Heart rate ≥110/min	498 (21%)	206 (21%)	46 (37%)	93 (20%)	115 (24%)	42 (21%)
Hemoglobin saturation (SaO <sub>2</sub> ) <90%	643 (28%)	290 (30%)	28 (23%)	207 (45%)	167 (35%)	53 (27%)
SBP <90 mmHg	94 (4.0%)	31 (3.2%)	4 (3.2%)	24 (5.2%)	30 (6.3%)	8 (4.0%)
<i>Simplified PESI (18)</i>						
Low risk	693 (30%)	356 (36%)	56 (45%)	0 (0%)	97 (20%)	69 (34%)
High risk	1640 (70%)	626 (64%)	68 (55%)	462 (100%)	380 (80%)	131 (66%)
<i>Clinical laboratory tests</i>						
Hemoglobin, g/dl, median (percentiles 25–75)	13.3 (12.0–14.5)	13.9 (12.7–15.0)	13.6 (12.6–14.5)	12.4 (10.8–13.6)	12.9 (11.9–13.9)	12.3 (10.7–13.5)
Creatinine >2 mg/dl (n=2306)	89 (3.8%)	49 (5.0%)	2 (1.6%)	12 (2.6%)	28 (5.9%)	4 (2.0%)
<i>Ultrasound and biomarkers, n (%)</i>						
Concomitant diseases (n=1784)	1010 (57%)	422 (43%)	43 (35%)	218 (47%)	207 (43%)	72 (36%)
Right ventricular dysfunction (n=1275)	458 (36%)	228 (23%)	38 (31%)	58 (13%)	89 (19%)	32 (16%)
BNP >200 pg/dl (n=917)	446 (49%)	221 (23%)	18 (15%)	70 (15%)	110 (23%)	31 (16%)
<i>Treatment, n (%)</i>						
Thrombolysis	103 (4.4%)	51 (5.2%)	12 (9.7%)	9 (1.9%)	19 (4.0%)	10 (5%)
Inferior vena cava filter	52 (2.2%)	21 (2.1%)	1 (0.8%)	10 (2.2%)	16 (3.4%)	7 (3.5%)

BNP, brain natriuretic peptide; cTnI, cardiac troponin I; COPD, chronic obstructive pulmonary disease; DVT, deep vein thrombosis; ECS, economy class syndrome; PESI, Pulmonary Embolism Severity Index; SBP, systolic blood pressure.

<sup>a</sup> Some patients presented several risk factors simultaneously.

<sup>b</sup> Since patients with PE due to hormone replacement therapy, use of oral contraceptives, pregnancy, postpartum, or hereditary thrombophilia were not included in the analysis, the sum of patients of the columns is not 2333.

<sup>c</sup> In the previous month.

**Table 2**  
Mortality and Non-Fatal Adverse Events During the First 30 Days of Follow-Up.<sup>a</sup>

	All n=2333	Idiopathic n=982	ECS n=124	Cancer n=462	Immobilization n=477	Surgery n=200
All-cause death	213 (9.1%)	54 (5.5%)	2 (1.6%)	92 (19.9%)	65 (13.6%)	8 (4.0%)
Death due to PE	76 (3.3%)	19 (1.9%)	1 (0.8%)	24 (5.2%)	30 (6.3%)	3 (1.5%)
Non-fatal recurrence	25 (1.1%)	9 (0.9%)	0 (0%)	7 (1.5%)	5 (1.0%)	6 (3.0%)
Non-fatal bleeding	54 (2.3%)	23 (2.3%)	1 (0.8%)	11 (2.4%)	11 (2.3%)	5 (2.5%)

<sup>a</sup> Some patients presented several risk factors simultaneously.

compared with the Student *t* test or the Mann–Whitney *U* test for asymmetric data. Categorical variables were represented as percentages and compared using the Chi-square test or Fisher's exact test, if necessary.

Accumulated incidence curves were estimated using the Kaplan–Meier method and compared using the log rank test.<sup>15,16</sup> A multivariate logistic regression model was constructed to evaluate the possible association between ECS and mortality.<sup>17</sup> A maximum model of 14 variables selected on the basis of the published experience and expert opinion was developed. Variables were: (a) age; (b) sex; (c) chronic obstructive pulmonary disease (COPD); (d) congestive heart failure (CHF); (e) heart rate; (f) systolic blood pressure; (g) dyspnea; (h) chest pain; (i) syncope; (j) ECS; (k) cancer; (l) recent surgery; (m) immobilization, and (n) simplified Pulmonary Embolism Severity Index (PESI) scale.<sup>18</sup> The analysis was constructed on the basis of the maximum model and by backward elimination of variables. Confounding variables (i.e., the coefficient of the variable evaluated was modified by more than 10% when the confounding variable was eliminated from the model) of the effect of ECS on the primary endpoint were maintained in the model. Odds ratios (OR) and corresponding 95% confidence intervals (CI) were calculated.

SPSS software (version 19.0, SPSS Inc., Chicago, Illinois, USA) was used for the statistical analysis. Results with a 2-tailed value of *P*<.05 were considered statistically significant.

## Results

### Patients

During the study period, 12 629 patients with suspected acute symptomatic PE were evaluated and diagnosis was confirmed in 2445 (19.4%). Of these, 113 were lost to follow-up, so the final sample consisted of 2333 patients (1089 men and 1244 women), 95% of the population evaluated (Fig. 1). No statistically significant differences were found between the baseline variables of the patients who were included and those who were excluded. Approximately 70% of patients (1659/2333) were diagnosed by chest CT angiogram, 744 (32%) by high probability ventilation/perfusion scintigraphy, while 76 (3%) had negative chest studies and DVT confirmed by ultrasound of the lower limbs. Some patients had several simultaneous positive diagnostic tests.

Study patient characteristics are shown in Table 1. The number of patients treated with inferior vena cava filters was low (2.2%; 52 of 2333 patients). Four percent (103 of 2333 patients) were treated with thrombolytics. Fewer patients in the ECS group were men (34% versus 47%; *P*<.01), and ECS patients were younger (55.8±14.2 vs 69.6±16.5; *P*<.001) and had less COPD (0% vs 8.1%; *P*<.001), heart failure (0.8% vs 6.0%; *P*<.01), cancer (4.8% vs 21%; *P*<.001), and history of recent hemorrhage (0% vs 3.4%; *P*=.03). A higher proportion of patients with ECS was classified as low risk according to the simplified PESI scale (45% vs 29%; *P*<.001). PE was more severe in patients with ECS, who presented more frequently with syncope (48% versus 14%; *P*<.001), tachycardia (37% vs 21%; *P*<.001), right ventricular dysfunction (31% vs 19%; *P*<.01), and myocardial damage (57% vs

**Table 3**  
Univariate Analysis for All-Cause Mortality in PE Patients.

Predictive Variable	Unadjusted OR (95% CI)	<i>P</i>
Age >80 years	1.82 (1.36–2.44)	<.001
Male sex	1.17 (0.88–1.55)	.28
COPD	2.15 (1.41–3.28)	<.001
CHF	2.59 (1.64–4.07)	<.001
HR ≥ 110/min	1.55 (1.13–2.12)	<.01
SBP <100 mmHg	2.90 (1.99–4.23)	<.001
Dyspnea	1.81 (1.27–2.60)	<.01
Chest pain	0.52 (0.39–0.71)	<.001
Syncope	0.58 (0.37–0.92)	.02
ECS	0.16 (0.04–0.63)	<.01
Cancer <sup>a</sup>	3.60 (2.68–4.82)	<.001
Recent surgery <sup>b</sup>	0.39 (0.19–0.81)	.01
Immobilization <sup>c</sup>	1.82 (1.33–2.49)	<.001
High risk on simplified PESI <sup>18</sup>	7.25 (4.11–12.80)	<.001

CHF, congestive heart failure; COPD, chronic obstructive pulmonary disease; ECS, economy class syndrome; HR, heart rate; OR, odds ratio; PESI, Pulmonary Embolism Severity Index; SBP, systolic blood pressure.

<sup>a</sup> Active or in treatment in the last year.

<sup>b</sup> In the previous month.

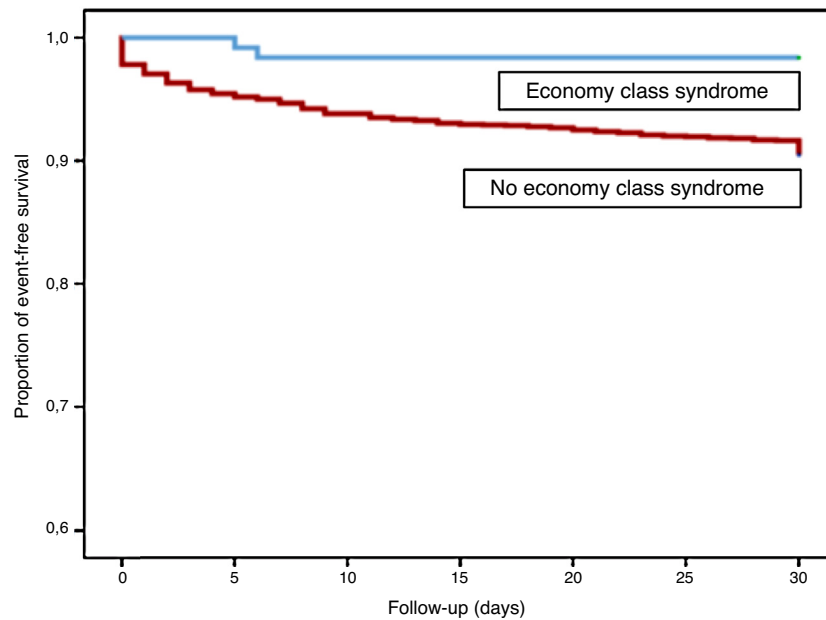
<sup>c</sup> Non-surgical patients bedridden for 4 or more days in the month prior to the diagnosis of PE.

28%; *P*<.001) than patients with idiopathic PE or PE due to other etiologies. More patients with ECS had residual DVT (45% vs 57%; *P*=.02). With regard to treatment, more patients with ECS received thrombolytic treatment (9.8% vs 4.1%; *P*<.01).

Of the 2333 patients, 213 (9.1%; 95% CI: 8.0–10.4) died during the first 30 days of follow-up (Table 2). Seventy-six patients (36%) died due to their PE, 59 (28%) due to cancer, 25 (12%) due to infection, 10 (4.7%) due to heart failure, 8 (3.8%) due to bleeding, and 35 (16%) due to other causes. Seventy-five patients presented a secondary event: 21 had an objectively confirmed thrombotic recurrence, 50 patients had non-fatal major bleeding, and 4 presented simultaneous bleeding and recurrence.

Patients with ECS had a significantly lower risk of all-cause death than patients with idiopathic PE or PE from other causes (log rank test, *P*<.01; Fig. 2). Mortality due to the PE itself in the first month of follow-up was similar in ECS and non-ECS patients (log rank test, *P*=.11). None of the ECS patients had thromboembolic recurrence, and only 1 (0.8%) had non-fatal major bleeding in the first 30 days of follow-up.

In the univariate analysis, age >80 years (OR: 1.82; 95% CI: 1.36–2.44; *P*<.001), some comorbidities, including COPD (OR: 2.15; 95% CI: 1.41–3.28; *P*<.001), heart failure (OR: 2.59; 95% CI: 1.64–4.07; *P*<.001), cancer (OR: 3.60; 95% CI: 2.68–4.82; *P*<.001), together with medical immobilization (OR: 1.82; 95% CI: 1.33–2.49; *P*<.001), clinical presentation [tachycardia (OR: 1.55; 95% CI: 1.13–2.12; *P*<.01) and hypotension (OR: 2.90; 95% CI: 1.99–4.23; *P*<.001)], and high risk on the simplified PESI scale (OR: 7.25; 95% CI: 4.11–12.80; *P*<.001) significantly increased the risk of all-cause death in the 30 days after PE diagnosis (Table 3). In contrast, a history of recent surgery (OR: 0.39; 95% CI: 0.19–0.81; *P*<.01) and ECS (OR: 0.16; 95% CI: 0.04–0.63; *P*<.01) were associated with a statistically significant reduction in the risk of death. In the multivariate analysis, ECS was independently associated with all-cause death



No. at risk				
ECS	124	122	122	122
No ECS	2.209	2.072	2.043	1.998

Log rank test,  $p < 0.01$

Fig. 2. Survival curve for the primary endpoint. Log rank test,  $P < .01$ .

**Table 4**  
Multivariate Analysis for All-Cause Mortality in PE Patients.

Predictive Variable	Adjusted OR (95% CI)	P
Age >80 years	1.42 (1.01–2.00)	.04
HR $\geq 110$ /min	1.31 (0.93–1.85)	.12
SBP <100 mmHg	2.13 (1.43–3.17)	<.001
ECS	0.22 (0.05–0.94)	.04
Cancer <sup>a</sup>	3.42 (2.43–4.83)	<.001
Recent surgery <sup>b</sup>	0.33 (0.16–0.70)	<.01
Immobilization <sup>c</sup>	1.87 (1.33–2.63)	<.001
High risk on simplified PESI <sup>18</sup>	3.08 (1.63–5.81)	<.01

ECS, economy class syndrome; HR, heart rate; OR, odds ratio; PESI, Pulmonary Embolism Severity Index; SBP, systolic blood pressures.

<sup>a</sup> Active or in treatment in the last year.

<sup>b</sup> In the previous month.

<sup>c</sup> Non-surgical patients bedridden for 4 or more days in the month prior to the diagnosis of PE.

during the first 30 days of follow-up (OR: 0.22; 95% CI: 0.05–0.94,  $P=.04$ ) (Table 4). ECS was not independently associated with death due to the PE itself during the first 30 days of follow-up (OR: 0.37; 95% CI: 0.05–2.77;  $P<.33$ ).

## Discussion

This study analyzed the clinical presentation and short-term prognosis of ECS in a large series of patients with acute symptomatic PE. Our results indicate that PE in patients with ECS more frequently causes right ventricular dysfunction and myocardial damage than idiopathic PE or PE triggered by other causes. However, the short-term prognosis of these patients is excellent.

We found that, while patients with PE caused by ECS are younger and have less comorbidity (e.g., COPD, heart failure) than patients with idiopathic PE or PE due to other causes, its form of presentation is more severe, and it began more frequently with syncope, tachycardia, and hypotension, all factors for poor prognosis in the

acute phase of the PE.<sup>19–22</sup> Interestingly, right ventricular dysfunction and myocardial necrosis were significantly more frequent in these patients. These results are similar to those of a previous study that evaluated the form of presentation of patients with ECS.<sup>23</sup> The reasons why these patients present this way remain unclear, but some mechanisms may be responsible. Hypoxia in the aircraft cabin increases pulmonary arterial pressure and could worsen right ventricular function.<sup>24</sup> Residual DVT was less frequent in patients with ECS than in patients with idiopathic PE or PE triggered by other causes, perhaps because in these patients the entire clot formed in the lower limbs breaks free, causing PE with a larger clot burden.

Despite their more severe PE, the short-term prognosis of these patients is excellent, and significantly better than that of patients with PE due to cancer or immobilization. This can be explained by the fact that while early death (in the initial days) among patients with PE is a result of right ventricular failure, late mortality is the result of patient comorbidity.<sup>25</sup>

What is the clinical significance of this study? Clinical practice guidelines advise against the use of fibrinolytic treatment in patients with intermediate risk PE. The PEITHO study analyzed the efficacy and safety of treatment with tenecteplase in normotensive patients with right ventricular dysfunction and myocardial damage. Although fibrinolytics significantly reduced the hemodynamic collapse of these patients, mortality was not affected, and severe bleeds were significantly more frequent in those who received fibrinolysis.<sup>26</sup> Our results support this recommendation in the subgroup of patients with PE due to ECS. Although this presentation is more serious (e.g., intermediate-high risk PE), prognosis is excellent when conventional anticoagulation is administered.

Our study has some limitations. Firstly, as this is an analysis of a historical cohort composed of patients from a single hospital, it is subject to the biases inherent to this type of study and results are not generalizable. However, it represents an unselected population of PE patients seen in routine clinical practice in our setting, so it may be considered an ideal series for evaluating the form of

presentation and prognosis of patients with ECS. Secondly, we could not measure the clot burden of our patients, so we cannot establish an association between the degree of pulmonary artery obstruction and the presence or absence of right ventricular dysfunction.

In conclusion, our results show that patients with PE caused by ECS have less comorbidity than patients with idiopathic PE or PE due to other causes. Although these patients more frequently present with high-intermediate risk PE, their short-term prognosis is excellent with conventional anticoagulation. Well-designed studies are needed to understand why these patients more often present right ventricular dysfunction and myocardial damage in the acute phase of the PE.

### Conflict of Interest

The authors state that they have no conflict of interest.

### References

- Goldhaber SZ, Visani L, de Rosa M. Acute pulmonary embolism: clinical outcomes in the International Cooperative Pulmonary Embolism Registry. *Lancet*. 1999;353:1386–9.
- Jiménez D, Aujesky D, Yusen RD. Risk stratification of normotensive patients with acute pulmonary embolism. *Br J Haematol*. 2010;151:415–24.
- Konstantinides SV, Torbicki A, Agnelli G, Danchin N, Fitzmaurice D, Galiè N, et al. Authors/Task Force Members. 2014 ESC Guidelines on the diagnosis and management of acute pulmonary embolism: The Task Force for the Diagnosis and Management of Acute Pulmonary Embolism of the European Society of Cardiology (ESC) Endorsed by the European Respiratory Society (ERS). *Eur Heart J*. 2014;35:3033–73.
- Kearon C, Akl EA, Ornelas J, Blaivas A, Jimenez D, Bounameaux H, et al. Antithrombotic therapy for VTE disease: CHEST guideline and Expert Panel Report. *Chest*. 2016;149:315–52.
- Prandoni P, Lensing AW, Piccioli A, Bernardi E, Simioni P, Girolami B, et al. Recurrent venous thromboembolism and bleeding complications during anticoagulant treatment in patients with cancer and venous thromboembolism. *Blood*. 2002;100:3484–8.
- Monreal M, Kakkar AK, Caprini JA, Barba R, Uresandi F, Valle R, et al. The outcome after treatment of venous thromboembolism is different in surgical and acutely ill medical patients. Findings from the RIETE registry. *J Thromb Haemost*. 2004;2:1892–8.
- Perez-Rodriguez E, Jimenez D, Díaz G, Pérez-Walton I, Luque M, Guillén C, et al. Incidence of air travel-related pulmonary embolism at the Madrid-Barajas airport. *Arch Intern Med*. 2003;163:2766–70.
- Lapostolle F, Surget V, Borrow SW, Desmaizières M, Sordelet D, Lapandry C, et al. Severe pulmonary embolism associated with air travel. *N Engl J Med*. 2001;345:779–83.
- Cruickshank JM, Gorlin R, Jennett B. Thromboembolism and air travel. *Lancet*. 1988;2:1501.
- Remy-Jardin M, Remy J, Watinne L, Giraud F. Central pulmonary thromboembolism: diagnosis with spiral volumetric CT with the single-breath-hold-technique-comparison with pulmonary angiography. *Radiology*. 1992;185:381–7.
- PIOPED investigators. Value of ventilation/perfusion scan in acute pulmonary embolism: results of the prospective investigation of the pulmonary embolism diagnosis (PIOPED). *JAMA*. 1990;263:2753–9.
- Kearon C, Ginsberg JS, Hirsh J. The role of venous ultrasonography in the diagnosis of suspected deep venous thrombosis and pulmonary embolism. *Ann Intern Med*. 1998;129:1044–9.
- Prandoni P, Cogo A, Bernardi E, Villalta S, Polistena P, Simioni P, et al. A simple approach for detection of recurrent proximal vein thrombosis. *Circulation*. 1993;88:1730–5.
- The van Gogh Investigators. Idraparinux versus standard therapy for venous thromboembolic disease. *N Engl J Med*. 2007;357:1094–104.
- Kalbfleisch JD, Prentice RL. The statistical analysis of failure time data. New York: John Wiley; 1980.
- Kaplan EL, Meier P. Nonparametric estimation from incomplete observations. *J Am Stat Assoc*. 1958;53:457–81.
- Nuñez E, Steyerberg EW, Nuñez J. Estrategias para la elaboración de modelos estadísticos de regresión. *Rev Esp Cardiol*. 2011;64:501–7.
- Jiménez D, Aujesky D, Moores L, Gómez V, Lobo JL, Uresandi F, et al. Simplification of the pulmonary embolism severity index for prognostication in patients with acute symptomatic pulmonary embolism. *Arch Intern Med*. 2010;170:1383–9.
- Lankeit M, Friesen D, Schäfer K, Hasenfuß G, Konstantinides S, Dellas C. A simple score for rapid risk assessment of non-high-risk pulmonary embolism. *Clin Res Cardiol*. 2013;102:73–80.
- Aujesky D, Obrosky DS, Stone RA, Auble TE, Perrier A, Cornuz J, et al. Derivation and validation of a prognostic model for pulmonary embolism. *Am J Respir Crit Care Med*. 2005;172:1041–6.
- Bova C, Sanchez O, Prandoni P, Lankeit M, Konstantinides S, Vanni S, et al. Identification of intermediate-risk patients with acute symptomatic pulmonary embolism. *Eur Respir J*. 2014;44:694–703.
- Jimenez D, Kopečna D, Tapson V, Briese B, Schreiber D, Lobo JL, et al. Derivation and validation of multimarker prognostication for normotensive patients with acute symptomatic pulmonary embolism. *Am J Respir Crit Care Med*. 2014;189:718–26.
- Lehmann R, Suess C, Leus M, Luxembourg B, Miesbach W, Lindhoff-Last E, et al. Incidence, clinical characteristics, and long-term prognosis of travel-associated pulmonary embolism. *Eur Heart J*. 2009;30:233–41.
- Turner BE, Hodkinson PD, Timperley AC, Smith TG. Pulmonary artery pressure response to simulated air travel in a hypobaric chamber. *Aerosp Med Hum Perform*. 2015;86:529–34.
- Klok FA, Zondag W, van Kralingen KW, van Dijk AP, Tamsma JT, Heyning FH, et al. Patient outcomes after acute pulmonary embolism. A pooled survival analysis of different adverse events. *Am J Respir Crit Care Med*. 2010;181:501–6.
- Meyer G, Vicaut E, Danays T, Agnelli G, Becattini C, Beyer-Westendorf J, et al. Fibrinolysis for patients with intermediate-risk pulmonary embolism. *N Engl J Med*. 2014;370:1402–11.