



Review

Is Chronic Obstructive Pulmonary Disease Caused by Wood Smoke a Different Phenotype or a Different Entity? ☆



Carlos A. Torres-Duque,^{a,*} María Carmen García-Rodríguez,^b Mauricio González-García^a

^a Fundación Neumológica Colombiana, Universidad de La Sabana, Bogotá, Colombia

^b Fundación Neumológica Colombiana, Bogotá, Colombia

ARTICLE INFO

Article history:

Received 9 November 2015

Accepted 4 April 2016

Available online 6 July 2016

Keywords:

Chronic obstructive pulmonary disease

Wood smoke

Phenotype

Biomass

ABSTRACT

Around 40% of the world's population continue using solid fuel, including wood, for cooking or heating their homes. Chronic exposure to wood smoke is a risk factor for developing chronic obstructive pulmonary disease (COPD). In some regions of the world, this can be a more important cause of COPD than exposure to tobacco smoke from cigarettes.

Significant differences between COPD associated with wood smoke (W-COPD) and that caused by smoking (S-COPD) have led some authors to suggest that W-COPD should be considered a new COPD phenotype. We present a review of the differences between W-COPD and S-COPD. On the premise that wood smoke and tobacco smoke are not the same and the physiopathological mechanisms they induce may differ, we have analyzed whether W-COPD can be considered as another COPD phenotype or a distinct nosological entity.

© 2016 SEPAR. Published by Elsevier España, S.L.U. All rights reserved.

Enfermedad pulmonar obstructiva crónica por humo de leña: ¿un fenotipo diferente o una entidad distinta?

RESUMEN

Alrededor del 40% de la población mundial sigue utilizando combustibles sólidos, entre ellos la leña, para cocinar o calentar sus hogares. La exposición crónica al humo de leña es un factor de riesgo para el desarrollo de enfermedad pulmonar obstructiva crónica (EPOC). En algunas zonas del mundo este factor puede ser más importante que la exposición al humo de tabaco, generalmente inhalado como humo de cigarrillo, como causa de EPOC.

Se han descrito diferencias significativas entre la EPOC relacionada con humo de leña (EPOC-L) y la EPOC causada por humo de tabaco (EPOC-T) que han llevado a plantear por algunos autores que la EPOC-L pueda ser considerada un nuevo fenotipo de la EPOC. Presentamos una revisión de las diferencias entre la EPOC-L y la EPOC-T. Basados en que el humo de la leña y el humo del tabaco no son iguales, y que podrían inducir mecanismos fisiopatológicos en algún punto diferentes, hacemos un análisis acerca de si la EPOC-L debe considerarse un fenotipo diferente de la EPOC o una entidad nosológica distinta.

© 2016 SEPAR. Publicado por Elsevier España, S.L.U. Todos los derechos reservados.

Palabras clave:

Enfermedad pulmonar obstructiva crónica

Humo de leña

Fenotipo

Biomasa

☆ Please cite this article as: Torres-Duque CA, García-Rodríguez MC, González-García M. Enfermedad pulmonar obstructiva crónica por humo de leña: ¿un fenotipo diferente o una entidad distinta?. Arch Bronconeumol. 2016;52:425–431.

* Corresponding author.

E-mail address: ctorres@neumologica.org (C.A. Torres-Duque).

Introduction

A phenotype is a set of observable characteristics in an individual resulting from the interaction between their genotype and the environment.^{1,2} These characteristics are not only physical traits but also biochemical and functional characteristics. Genotype refers to an individual's genetic make-up (combination of genes). The manner in which the information contained in the genes (genotype) translates to observable characteristics (phenotype) depends on different factors, the most important of which are how dominant the gene is and how it interacts with the environment.^{1,2}

In the clinical setting, the concept of phenotype has been used to identify groups of patients who share attributes that distinguish them from others, making up clinical subgroups.³ A good example of this idea of phenotype is chronic obstructive pulmonary disease (COPD), a disease in which the underlying genes are unknown (with the exception of alpha-1 antitrypsin deficiency). Since phenotype differentiation has clinical implications, the term “clinical phenotype” has been proposed, which is defined as “a single or combination of disease attributes that describe differences between individuals with COPD as they relate to clinically meaningful outcomes (symptoms, exacerbations, response to therapy, rate of disease progression, or death).”⁴

The term COPD came into use around 50 years ago⁵ and initially included 2 entities, chronic bronchitis and emphysema, which shared a common risk factor (smoking) and a common functional change (persistent airflow obstruction).^{6,7} The most pure cases of these 2 entities had sufficiently different clinical characteristics to enable them to be separated into the 2 classic COPD phenotypes: chronic bronchitis or “blue bloater” and emphysema or “pink puffer”. However, it was not known then that different phenotypes would eventually determine different therapeutic interventions and outcomes, so little importance was given to the separation of the phenotypes, and use of the generic term COPD expanded.

The concept of clinical phenotypes in COPD is now being revisited, thanks to long-term follow-up of patient cohorts and technological advances.^{3,4,8,9} Although the implications of separation by phenotypes are still debated, they have been included in some clinical guidelines.¹⁰ The most widely accepted phenotypes are: emphysema, chronic bronchitis, frequent exacerbator, and asthma-COPD overlap syndrome.^{3,4,8–10}

The growing wealth of data on the differences between biomass smoke-related COPD, particularly wood smoke, and tobacco smoke-related COPD^{11,12} has led experts to propose biomass COPD as an additional phenotype.^{13,14} This proposal is controversial, and warrants a review of the existing information on these differences and the applicability of the term phenotype in the presence of risk factors that could be considered different.

In this review, we discuss the differences between wood smoke-related COPD (W-COPD) and tobacco smoke-related COPD (T-COPD). We have used the general term T-COPD, although a more accurate name would be cigarette smoke COPD, as this smoke contains an additional number of chemical products apart from those derived from burning tobacco.^{15,16} Since the role of these chemicals cannot be clearly separated from the role of tobacco in the pathogenesis of COPD, we will use the generic term T-COPD.

For this review, we searched the Medline, LILACS and Cochrane databases, using the terms biomass, biomass fuels, wood, wood smoke, indoor air pollution, respiratory diseases, chronic bronchitis and chronic obstructive pulmonary disease, and the connectors AND/OR.

Exposure to Wood Smoke as a Risk Factor for Chronic Obstructive Pulmonary Disease

Around 40% of the world’s population, particularly in developing countries, still use solid fuel, whether coal or biomass (wood, vegetable remains and dung), to cook or heat their homes.^{17,18} In some countries, these fuels are the main source of energy for over 70% of the rural population.^{17,18} In countries where migration from rural areas to cities is high, the population of urban dwellers over the age of 40 years frequently has a significant history of exposure to biomass combustibles. One example is Colombia, where 39% of the population over 40 years of age living in the 5 main cities had cooked with wood for more than 10 years before relocating.¹⁹ In 2010, indoor air pollution from solid fuels was the

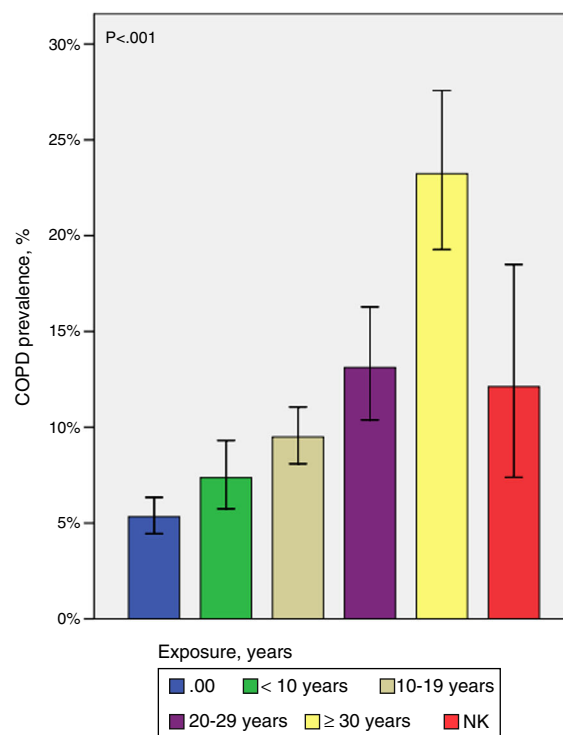


Fig. 1. Prevalence of COPD by years of exposure to wood smoke.⁴⁰ The prevalence of COPD in individuals exposed to wood smoke increases significantly as the duration of exposure lengthens. NK: not known (individuals exposed to wood smoke who did not report years of exposure).

third risk factor for death throughout the world (3.5 million deaths a year).²⁰

A growing number of studies support the hypothesis that exposure to solid fuels, including wood, is a risk factor for respiratory diseases, including acute respiratory disease in children, COPD, chronic bronchitis, airflow obstruction, bronchial hyperreactivity, asthma, tuberculosis and lung cancer.^{21–39} Our group has documented the association between exposure to wood smoke for over 10 years and asthma in the population >40 years of age.³⁹

Three systematic reviews and meta-analyses confirm that individuals chronically exposed to solid fuels at home have a higher risk of developing COPD.^{36–38} In the case of wood smoke, the risk of COPD increases significantly with the length of exposure (Fig. 1)⁴⁰ and with simultaneous exposure to tobacco smoke.^{40,41} Although the risk is consistently greater in women, a populational study ($n=5539$) showed that, after adjusting for age, smoking, educational level and occupational exposure, men exposed to wood smoke for more than 10 years had a higher risk of COPD (odds ratio [OR] women: 1.84; OR men: 1.53).⁴⁰ Exposure to wood smoke has also been described as a risk factor for COPD in developed countries.³³

Air pollution in the home due to burning solid fuels is thought to be the main worldwide risk factor for COPD,^{42,43} although the prevalence of biomass-related COPD has not been precisely defined. The PREPOCOL study found a prevalence of 6.7% for W-COPD compared to 7.8% for T-COPD.⁴⁰

Some populational studies, however, found no association between exposure to biomass fuels and COPD.^{44,45} Most of the cohorts evaluated in these studies lived near sea level, where cooking is usually done outdoors or with better ventilation. In contrast, many of the studies which document this association were performed in areas situated at high or intermediary altitudes, where, due to low temperatures, cooking is done all year round inside poorly ventilated homes as it occurs in winter in regions that have seasons.

Although exposure to wood smoke has been associated with respiratory diseases other than COPD,^{24,46–48} this review focuses on the differences between W-COPD and T-COPD.

Differences Between Chronic Obstructive Pulmonary Disease due to Wood Smoke and Chronic Obstructive Pulmonary Disease due to Tobacco Smoke

Although the risk of COPD has been proven for all types of solid fuels, studies which best characterize COPD due to this type of exposure have focused on COPD caused by inhalation of wood smoke.^{11–14,24,32,34,47,49} Several studies show that W-COPD has both significant differences and similarities with T-COPD.^{13,40,47,49–62} The main differences are described below and summarized in Table 1.

Demographic Differences

W-COPD is more common in women, who are more often involved in the task of preparing food.¹¹ Women with W-COPD are consistently reported to be shorter in height, with a higher body mass index (BMI) than women with T-COPD.^{40,47,49–51,54–56} Since most women with W-COPD are of a rural origin, and most of those with T-COPD are from urban conglomerations, differences in height and BMI may be due to ethnic and environmental reasons that require investigation. Moreover, women with W-COPD are older, suggesting that patients with this type of exposure need more time to develop the disease or are diagnosed later.^{40,49–51,55,56}

Clinical Differences

Although several studies have shown that the frequency of respiratory symptoms (cough, expectoration, and dyspnea) and chronic bronchitis is high in subjects exposed to biomass smoke,^{36,38} studies comparing W-COPD and T-COPD do not consistently find significant differences. Some studies show that W-COPD symptoms are more frequent or have more impact^{13,49,62} but others do not.^{51,53,56} With regard to the physical examination, González-García et al.⁴⁹ found more frequent rhonchus and wheezing in W-COPD. Functional and tomographic findings, described below, document greater bronchial compromise, backing up studies which show more frequent cough, expectoration, rhonchus and wheezing in W-COPD.

Differences in Quality of Life

A study of 138 women with COPD showed that, among women with the same degree of obstruction, those with W-COPD had a poorer health status (poorer quality of life and worse dyspnea) than those with T-COPD, with no differences in comorbidities (Fig. 2).⁶² Furthermore, Camp et al., using the Saint George's Hospital Questionnaire, found worse symptoms and more compromised activity indices in women with W-COPD.¹³

Differences in Lung Function

Compared with T-COPD, obstruction in W-COPD is milder, both overall and after adjusting for age,^{13,40,47,49–51,56} and the decline in forced expiratory volume in 1 second (FEV₁) is smaller and more homogeneous than in T-COPD.⁵⁰ Some studies show that carbon dioxide arterial pressure (PaCO₂) is higher (lower ventilation) and oxygen arterial pressure (PaO₂) and oxygen arterial saturation (SaO₂) are lower in W-COPD than in T-COPD.^{13,49,50,56} The lower oxygenation rates observed in W-COPD may be explained in part by

Table 1
Differences Between W-COPD and T-COPD.

Characteristics	W-COPD	T-COPD
<i>Demographic data</i> ^{40,47,49–51,54–56}		
Sex	Predominantly women	Predominantly men
Age	Highest	Lowest
Height	Lowest	Highest
BMI	Highest	Lowest
<i>Clinical characteristics</i> ^{38,49}		
Cough and expectoration	Very common	Common
Chronic bronchitis	Common	Common
Rhonchus and wheezing	Common	Less common
<i>Lung function tests</i> ^{13,40,47,49–51,54–56}		
PaCO ₂	Higher (some studies)	Less high
PaO ₂ and SaO ₂	Lower	Less low
Obstruction (FEV ₁ –FEV ₁ /FVC)	Mild	More severe
Reduced FEV ₁	Lowest	Highest
Bronchial hyperreactivity	Highest	Lowest
DL _{CO} and DL _{CO} /VA	Normal or mildly reduced	More reduced
<i>Radiography–tomography</i> ^{13,47,49,51,54,59}		
Emphysema	Uncommon and mild	Common and more severe
Bronchial thickening	Common	Less common
Bronchiectasis	Common	Uncommon
Atelectasis	Common	Uncommon
<i>Histology</i>		
Emphysema	Mild	More severe
Anthracosis	Common	Less common
Airway fibrosis	Common	Less common
Thickening of arteriole intima	Common	Less common
<i>Outcomes and clinical phenotypes</i> ^{13,51,56,61,62}		
Pulmonary hypertension	More common	Less common
Quality of life	Similar or symptoms and activities more compromised	Similar or symptoms and activities less compromised
Survival	Similar after adjusting for age Less after adjusting for age	Similar
Exacerbator phenotype	Similar	Similar
Asthma-COPD overlap phenotype	More common	Less common
Emphysema phenotype	Uncommon	More common

BMI: body mass index; DL_{CO}: carbon monoxide diffusing capacity; FEV₁: forced expiratory volume in 1 s; FVC: forced vital capacity; PaCO₂: carbon dioxide arterial pressure; PaO₂: oxygen arterial pressure; SaO₂: oxygen saturation; VA: alveolar volume.

hypoventilation. It remains to be determined whether this behavior is related with a higher BMI in these patients, most of whom are women over 50 years of age.

Normal or mildly altered diffusing capacity (DL_{CO}) and DL_{CO}/alveolar volume (DL_{CO}/VA) ratio are consistently observed in W-COPD compared to T-COPD, in which these parameters are significantly reduced.^{49,54} This finding correlates with the lower grade of emphysema found on computed tomography (CT) in patients with W-COPD,^{13,54,59} and occurs at all levels of COPD severity (Fig. 3A and B).⁴⁹ Mildly reduced DL_{CO} with normal DL_{CO}/VA in women with W-COPD has been described in cases with significantly compromised small airways with little emphysema (pseudophysiological emphysema).⁶³ Compromised diffusion correlates better with reduced FEV₁ in women with T-COPD than in those with

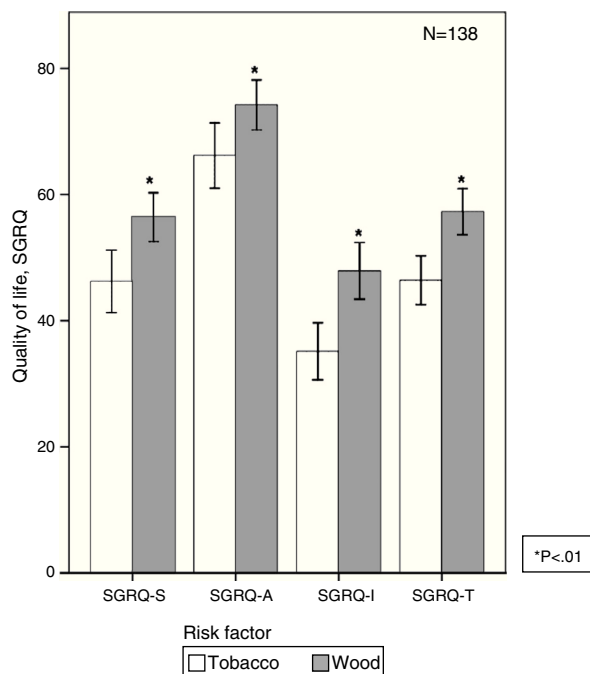


Fig. 2. Quality of life in COPD by wood smoke or tobacco smoke exposure.⁶² In W-COPD, overall quality of life scores (SGRQ) and all individual domain scores are poorer. SGRQ: Saint George's Hospital Respiratory Questionnaire.

W-COPD, underpinning the greater contribution of emphysema to airflow obstruction in T-COPD (Fig. 4).⁴⁹

Women with W-COPD have greater bronchial hyperreactivity than women with T-COPD (Fig. 5).⁵⁵ Further research is needed to determine if this correlates with the higher frequency of the asthma-COPD overlap phenotype observed in biomass-related COPD.⁵ Taking into account the predominant role that inhaled corticosteroids may have in patients with asthma-COPD overlap syndrome,^{9,10} these medications can be presumed to have a different impact on W-COPD than on T-COPD.

Differences in Exercise Tolerance

Some studies which included the 6-minute walking test found no significant differences in distances walked between patients

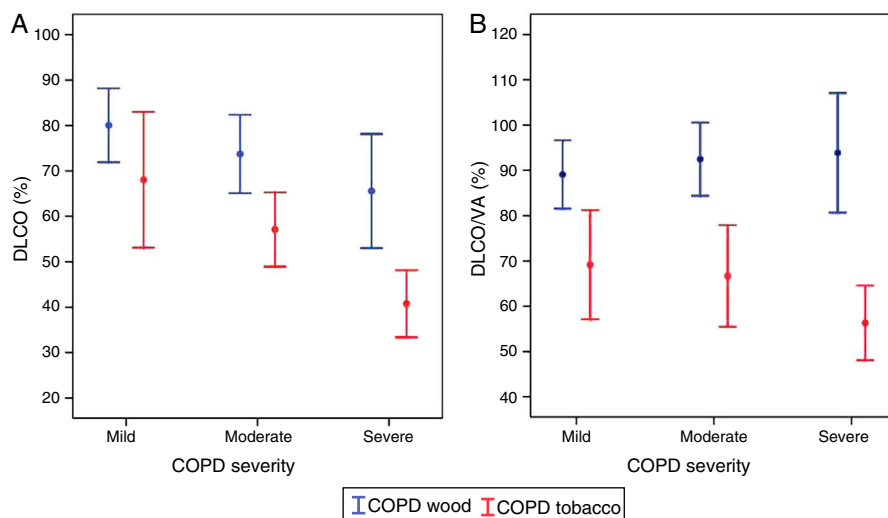


Fig. 3. (A) DL_{CO} (%) by exposure and degree of obstruction.⁴⁹ (B) DL_{CO}/VA (%) by exposure and degree of obstruction.⁴⁹ In T-COPD, DL_{CO} and DL_{CO}/VA are more heavily compromised. DL_{CO}/VA is normal in W-COPD at all levels of severity. DL_{CO}: carbon monoxide diffusing capacity; VA: alveolar volume.

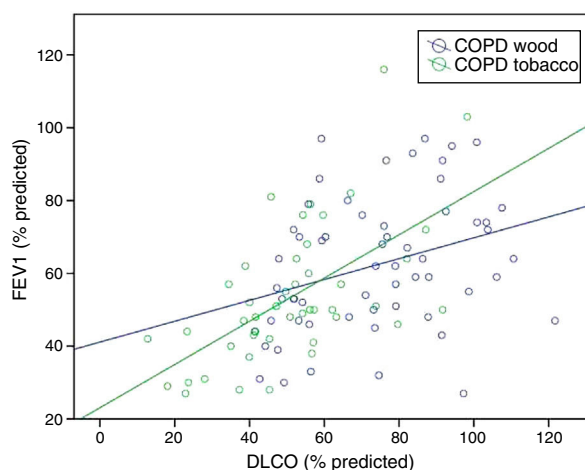


Fig. 4. Correlation between FEV₁ (%) and DL_{CO} by exposure.⁴⁹ Greater correlation is observed between FEV₁ and DL_{CO} in T-COPD ($P<.001$, $r=0.599$) than in W-COPD ($P=.014$, $r=0.320$). DL_{CO}: carbon monoxide diffusing capacity; FEV₁: forced expiratory volume in 1 s.

with W-COPD and T-COPD.^{13,56,62} Camp et al.¹³ reported lower arterial oxygen saturation measured by pulse oximetry (SpO₂) at the end of the test in women with W-COPD, but this was not reported in other studies.

Tomography and Histological Differences

Patients with W-COPD have consistently less emphysema and more airway changes (bronchial thickening and fibrosis, bronchiectasis, and atelectasis) than patients with T-COPD on both chest radiographs and histological studies.^{13,51,52,54,59} These morphological differences can be related with a less compromised DL_{CO} and probably with the findings of greater bronchial hyperreactivity⁵⁵ and more frequent asthma phenotype in W-COPD.⁵¹

Differences in Pulmonary Hypertension

A recent study found that pulmonary hypertension on echocardiography was more common in patients with W-COPD than in those with T-COPD.⁶⁰ In a previous study, our group, on the basis of radiographical evaluations, suggested the same in patients with

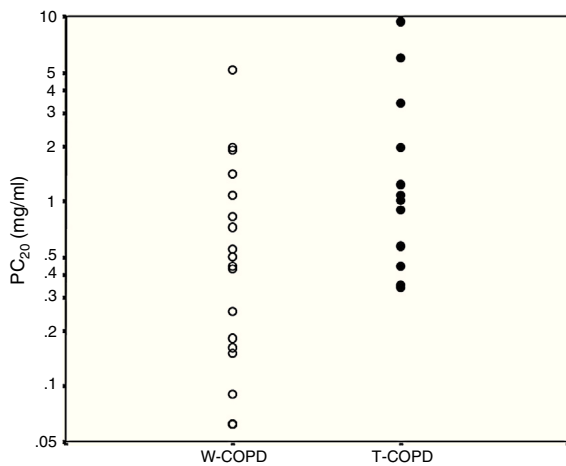


Fig. 5. Bronchial hyperreactivity evaluated by PC₂₀ by exposure.⁵⁵ White circles: W-COPD; black circles: T-COPD. PC₂₀ geometric mean: W-COPD versus T-COPD: 0.39 (0.06–5.13) versus 1.24 (0.34–9.39), $P=0.028$. PC₂₀: methacholine concentration causing $\geq 20\%$ reduction in FEV₁.

severe COPD,⁴⁹ and Sandoval et al.⁶¹ showed a high rate of PH among individuals exposed to wood smoke compared to those with T-COPD. The origin of PH in W-COPD patients does not appear to be related solely with hypoxic pulmonary vasoconstriction, but also to direct effects caused by the inhaled substances or indirect inflammatory-mediated effects.⁶⁴

Differences in the Incidence of Bronchial Anthracofibrosis

The incidence of bronchial anthracofibrosis and its severity in individuals exposed to wood smoke or tobacco smoke has not been evaluated in prospective studies, and no differences are known. However, anthracofibrosis is commonly encountered in the airway of subjects exposed to wood smoke, sometimes accompanied by bronchial stenosis.^{65–67} A significant proportion of these patients show documented airway obstruction⁶⁵ possibly aggravated by their central airway stenosis. It is currently impossible to ascertain if bronchial anthracofibrosis is yet another feature of W-COPD that appears more commonly and in a more severe form than in T-COPD, or if it is a specific entity accompanied by obstruction.

Differences in Meaningful Clinical Outcomes

After adjusting for age, sex, and disease severity, no differences were found in survival between W-COPD and T-COPD.^{56,57} Nor were differences identified in exacerbation rates between the 2 groups,⁵¹ but it should be noted that no prospective data are available on this aspect.

Differences in the Distribution of Clinical Phenotypes

Golpe et al.⁵¹ evaluated the frequency of clinical phenotypes defined by the Spanish COPD guidelines¹⁰ in patients with COPD caused by biomass or tobacco smoke. Similarly to the findings discussed above, they found a greater frequency of emphysema phenotype in T-COPD. The asthma-COPD overlap phenotype was more common in biomass COPD, but the difference disappeared after adjusting for sex. No difference was found in the frequencies of chronic bronchitis or exacerbator phenotypes.⁵¹

Possible Reasons for Differences Between Chronic Obstructive Pulmonary Disease due to Wood Smoke and Chronic Obstructive Pulmonary Disease due to Tobacco Smoke

It is reasonable to expect that the greater airway inflammatory involvement and the lower rate of emphysema in W-COPD compared to T-COPD have an etiological, pathogenic and physiopathological basis. However, very little data are available to explain the reasons for these differences.

The composition of wood smoke, which contains hundreds of chemical compounds and particulates) is just as complex^{23,68} as that of cigarette smoke.^{15,16} Wood combustion is generally incomplete, generating greater concentrations of certain substances such as CO, benzene, and polycyclic hydrocarbons, such as benzopyrene, compared to cigarette smoke.²³ Practically 100% of the particulated material in cigarette smoke is less than 2.5 μm in size.⁶⁹ This proportion is nearer 90% in wood smoke⁶⁸; the remaining 10% of particles are between 2.5 and 10 μm in size. The role of this distribution of particle size in the greater airway compromise and more common development of anthracofibrosis in W-COPD has not been determined.

Silva et al.⁷⁰ recently reviewed pathogenic mechanisms involved in biomass COPD. As in T-COPD, many of these mechanisms are related with inflammatory activation and oxidative stress, whereas no obvious significant differences in the mechanisms involved in the generation of respiratory injury in W-COPD were identified. Although the lower rate or absence of emphysema in W-COPD might suggest less proteolytic activity against exposure to biomass smoke, a recent study found no differences in this respect when comparing exposure to biomass smoke and to cigarette smoke.⁶⁴ Some authors have suggested that differences between W-COPD and T-COPD may be determined in part by differences in the characteristics of exposure,¹¹ but research is needed to support this view.

In summary, the physiopathological mechanisms involved in W-COPD remain unclear, but it seems that inflammatory activation in the airway is different, and of a greater magnitude, and that proteolytic activity induces less emphysema.

Chronic Obstructive Pulmonary Disease due to Wood Smoke: A New Chronic Obstructive Pulmonary Disease Phenotype or a Different Entity?

The evidence consistently supports differences between W-COPD and T-COPD with respect to greater inflammatory airway compromise and a much lower or absent degree of emphysema in the former. The etiological factors, wood smoke and cigarette smoke, can be grouped under the heading of noxious particles or gases, but they are also different,²³ so it is reasonable to propose that W-COPD be considered a distinct disease, rather than a new COPD phenotype.^{13,14} Additionally, recognition that exposure to wood smoke may be associated with radiological, functional and histological manifestations that differ from those described under the definition of COPD, such as pulmonary infiltrates, restrictive patterns and particulate deposits in the lung,^{24,46–48} may be taken as yet another argument for separating it into a different nosological entity.

Even if it can be agreed, using the present definition, to describe obstructive disease caused by exposure to wood smoke as COPD, W-COPD could still not be considered a different clinical phenotype, since its clinical, functional, histological and radiological differences do not lead to differences in meaningful outcomes, such as exacerbations and mortality, as proposed in the definition of clinical phenotype.⁴

From a nosological point of view, the model of respiratory disease caused by wood smoke leads us to question the definition of COPD.⁷¹ COPD has been defined as a non-specific functional characteristic (irreversible airflow limitation [post-bronchodilator obstruction]) in the presence of an imprecise exposure (noxious particles or gases), in the absence of a single etiological factor or a highly specific or pathognomonic feature.⁷²

If a single etiological factor or a highly-specific defining pathological trait is present, the identification of clinical phenotypes is a valid approach to achieve the goal of designing individualized patient management.^{3,9} If the etiological factor of a disease is not identified, or is not unique, as in the case of COPD (noxious particles or gases), and the disease is defined by a non-specific trait, the different characteristics and outcomes of a group may represent a distinct, separate entity, rather than another phenotype expression.

Irrespective of whether W-COPD is considered a new phenotype or a distinct entity, the most important consideration is how it affects prognosis and treatment. It can be presumed that the physiopathological mechanisms of W-COPD are different, and that a different approach to treatment may be needed. In view of the predominating airway compromise, anti-inflammatories, such as inhaled corticosteroids, can be expected to play a more important role. Further research is required on the physiopathological mechanisms and treatment of disease caused by wood smoke. Better understanding of these differences could be applied to the considerable number of cases of COPD unrelated with cigarette or wood smoke,^{73,44} and disorders due to occupational and environmental air pollution which are classified under COPD could be better characterized.

The term COPD has been unquestionably important. On the road toward personalized treatment, beyond the stage in which phenotyping has a central role, differentiation by etiological or causative agent remains essential.^{71,74} The idea of COPD as a syndrome which encompasses diverse specific entities is growing, and it appears to be time to rethink the definition of COPD.³

Conclusions

W-COPD differs from T-COPD. The causative factor (wood smoke) and the characteristics of exposure are also different, and this might mean that the physiopathological mechanisms and/or its severity differ in some respect, explaining the greater inflammatory airway compromise and the lack of emphysema that are features of W-COPD. Therapeutic options would therefore also differ, and a greater role would be given to anti-inflammatories, such as inhaled corticosteroids. From this standpoint, W-COPD is better understood as a distinct disease rather than a COPD phenotype, bringing into question the accuracy of COPD definitions.

Conflict of Interests

The authors state that they have no conflict of interests.

References

- Suzuki DT, Griffiths AJ, Miller JH, Lewontin RC. An introduction to genetic analysis. 7th ed. WH Freeman and Company; 2000.
- Wojczynski MK, Tiwari HK. Definition of phenotype. *Adv Genet.* 2008;60:75–105.
- Vestbo J. COPD: definition and phenotypes. *Clin Chest Med.* 2014;35:1–6.
- Han MK, Agusti A, Calverley PM, Celli BR, Criner G, Curtis JL, et al. Chronic obstructive pulmonary disease phenotypes: the future of COPD. *Am J Respir Crit Care Med.* 2010;182:598–604.
- Petty TL. The history of COPD. *Int J Chron Obstr Pulmon Dis.* 2006;1:3–14.
- Meneely G, Wyatt J, Steele J, Renzetti A, Harris H. Chronic bronchitis, asthma, and pulmonary emphysema – a statement by Committee on Diagnostic Standards for Nontuberculous Respiratory Diseases. *Am Rev Respir Dis.* 1962;85:762–8.
- National Heart, Lung, and Blood Institute, Division of Lung Diseases Workshop Report. The definition of emphysema. *Am Rev Respir Dis.* 1985;132:182–5.
- Segreti A, Stirpe E, Rogliani P, Cazzola M. Defining phenotypes in COPD: an aid to personalized healthcare. *Mol Diagn Ther.* 2014;18:381–8.
- Miravittles M, Calle M, Soler-Cataluna JJ. Clinical phenotypes of COPD: identification, definition and implications for guidelines. *Arch Bronconeumol.* 2012;48:86–98.
- Miravittles M, Soler-Cataluña JJ, Calle M, Molina J, Almagro P, Quintano JA, et al. Guía española de la EPOC (GesEPOC). Actualización 2014. *Arch Bronconeumol.* 2014;50:1–16.
- Pérez-Padilla R, Ramirez-Venegas A, Sansores-Martinez R. Clinical characteristics of patients with biomass smoke-associated COPD and chronic bronchitis, 2004–2014. *J COPD Found.* 2014;1:23–32.
- Assad NA, Balmes J, Mehta S, Cheema U, Sood A. Chronic obstructive pulmonary disease secondary to household air pollution. *Semin Respir Crit Care Med.* 2015;36:408–21.
- Camp PG, Ramirez-Venegas A, Sansores RH, Alva LF, McDougall JE, Sin DD, et al. COPD phenotypes in biomass smoke- versus tobacco smoke-exposed Mexican women. *Eur Respir J.* 2014;43:725–34.
- Gonzalez-García M, Torres-Duque C. Wood smoke COPD: a new description of a COPD phenotype. *Eur Respir J.* 2014;44:261–2.
- Yoshida T, Tuder RM. Pathobiology of cigarette smoke-induced chronic obstructive pulmonary disease. *Physiol Rev.* 2007;87:1047–82.
- Centers for Disease Control and Prevention (US), National Center for Chronic Disease Prevention and Health Promotion (US), Office on Smoking and Health (US). How Tobacco Smoke Causes Disease: The Biology and Behavioral Basis for Smoking-Attributable Disease: A Report of the Surgeon General. Atlanta (GA): Centers for Disease Control and Prevention (US); 2010. Available at: <http://www.ncbi.nlm.nih.gov/books/NBK53019> [accessed 19.08.15].
- Bonjour S, Adair-Rohani H, Wolf J, Bruce NG, Mehta S, Pruss-Ustun A, et al. Solid fuel use for household cooking: country and regional estimates for 1980–2010. *Environ Health Perspect.* 2013;121:784–90.
- World Health Organization. World Health Statistics; 2015. Available at: http://www.who.int/gho/publications/world_health_statistics/en/2015 [accessed 02.09.15].
- Caballero A, Torres-Duque CA, Jaramillo C, Bolivar F, Sanabria F, Osorio P, et al. Prevalence of COPD in five Colombian cities situated at low, medium, and high altitude (PREPOCOL study). *Chest.* 2008;133:343–9.
- Lim SS, Vos T, Flaxman AD, Danaei G, Shibuya K, Adair-Rohani H, et al. A comparative risk assessment of burden of disease and injury attributable to 67 risk factors and risk factor clusters in 21 regions, 1990–2010: a systematic analysis for the Global Burden of Disease Study 2010. *Lancet.* 2012;380:2224–60.
- Smith KR, Mehta S, Maeusezahl-Feuz M. Indoor air pollution from household use of solid fuels. Comparative Quantification of Health Risks. Global and Regional Burden of Disease Attributable to Selected Major Risk Factors, vol. 2; 2004. p. 1435–93.
- Ezzati M, Kammen DM. The health impacts of exposure to indoor air pollution from solid fuels in developing countries: knowledge, gaps, and data needs. *Environ Health Perspect.* 2002;110:1057–68.
- Naeher LP, Brauer M, Lipsett M, Zelikoff JT, Simpson CD, Koenig JQ, et al. Woodsmoke health effects: a review. *Inhal Toxicol.* 2007;19:67–106.
- Torres-Duque C, Maldonado D, Perez-Padilla R, Ezzati M, Viegi G. Biomass fuels and respiratory diseases: a review of the evidence. *Proc Am Thorac Soc.* 2008;5:577–90.
- Viegi G, Simoni M, Scognamiglio A, Baldacci S, Pistelli F, Carrozzi L, et al. Indoor air pollution and airway disease. *Int J Tuberc Lung Dis.* 2004;8:1401–15.
- Kurmi OP, Lam KB, Ayres JG. Indoor air pollution and the lung in low- and medium-income countries. *Eur Respir J.* 2012;40:239–54.
- Kim KH, Jahan SA, Kabir E. A review of diseases associated with household air pollution due to the use of biomass fuels. *J Hazard Mater.* 2011;192:425–31.
- Bruce N, Perez-Padilla R, Albalak R. Indoor air pollution in developing countries: a major environmental and public health challenge. *Bull World Health Organ.* 2000;78:1078–92.
- Eisner MD, Anthonisen N, Coultas D, Kuenzli N, Perez-Padilla R, Postma D, et al. An official American Thoracic Society public policy statement: novel risk factors and the global burden of chronic obstructive pulmonary disease. *Am J Respir Crit Care Med.* 2010;182:693–718.
- Sood A. Indoor fuel exposure and the lung in both developing and developed countries: an update. *Clin Chest Med.* 2012;33:649–65.
- Laumbach RJ, Kipen HM. Respiratory health effects of air pollution: update on biomass smoke and traffic pollution. *J Allergy Clin Immunol.* 2012;129:3–11, quiz 2–3.
- Gordon SB, Bruce NG, Grigg J, Hibberd PL, Kurmi OP, Lam KB, et al. Respiratory risks from household air pollution in low and middle income countries. *Lancet Respir Med.* 2014;2:823–60.
- Orozco-Levi M, Garcia-Aymerich J, Villar J, Ramirez-Sarmiento A, Anto JM, Gea J. Wood smoke exposure and risk of chronic obstructive pulmonary disease. *Eur Respir J.* 2006;27:542–6.
- Diette GB, Accinelli RA, Balmes JR, Buist AS, Checkley W, Garbe P, et al. Obstructive lung disease and exposure to burning biomass fuel in the indoor environment. *Glob Heart.* 2012;7:265–70.
- Perez-Padilla R, Schillmann A, Riojas-Rodriguez H. Respiratory health effects of indoor air pollution. *Int J Tuberc Lung Dis.* 2010;14:1079–86.
- Po JY, FitzGerald JM, Carlsten C. Respiratory disease associated with solid biomass fuel exposure in rural women and children: systematic review and meta-analysis. *Thorax.* 2011;66:232–9.
- Hu G, Zhou Y, Tian J, Yao W, Li J, Li B, et al. Risk of COPD from exposure to biomass smoke: a metaanalysis. *Chest.* 2010;138:20–31.

38. Kurmi OP, Semple S, Simkhada P, Smith WC, Ayres JG. COPD and chronic bronchitis risk of indoor air pollution from solid fuel: a systematic review and meta-analysis. *Thorax*. 2010;65:221–8.
39. Gonzalez-García M, Caballero A, Jaramillo C, Maldonado D, Torres-Duque CA. Prevalence, risk factors and underdiagnosis of asthma and wheezing in adults 40 years and older: a population-based study. *J Asthma*. 2015;52:823–30.
40. Torres-Duque CA, Caballero A, González-García M, Jaramillo C, Maldonado D. Chronic obstructive pulmonary disease in people exposed to Wood smoke. Pre-protocol: a population based study. *Am J Respir Crit Care Med*. 2013;187:A364.
41. Sood A, Petersen H, Blanchette CM, Meek P, Picchi MA, Belinsky SA, et al. Wood smoke exposure and gene promoter methylation are associated with increased risk for COPD in smokers. *Am J Respir Crit Care Med*. 2010;182:1098–104.
42. Salvi S, Barnes PJ. Is exposure to biomass smoke the biggest risk factor for COPD globally. *Chest*. 2010;138:3–6.
43. Mortimer K, Gordon SB, Jindal SK, Accinelli RA, Balmes J, Martin IWJ. Household air pollution is a major avoidable risk factor for cardiorespiratory disease. *Chest*. 2012;142:1308–15.
44. Lamprecht B, McBurnie MA, Vollmer WM, Gudmundsson G, Welte T, Nizankowska-Mogilnicka E, et al. COPD in never smokers: results from the population-based burden of obstructive lung disease study. *Chest*. 2011;139:752–63.
45. Menezes AM, Perez-Padilla R, Jardim JR, Muino A, Lopez MV, Valdivia G, et al. Chronic obstructive pulmonary disease in five Latin American cities (the PLATINO study): a prevalence study. *Lancet*. 2005;366:1875–81.
46. Ozbay B, Uzun K, Arslan H, Zehir I. Functional and radiological impairment in women highly exposed to indoor biomass fuels. *Respirology*. 2001;6:255–8.
47. Moran-Mendoza O, Perez-Padilla JR, Salazar-Flores M, Vazquez-Alfaro F. Wood smoke-associated lung disease: a clinical, functional, radiological and pathological description. *Int J Tuberc Lung Dis*. 2008;12:1092–8.
48. Restrepo J, Reyes P, de Ochoa P, Patino E. Neumoconiosis por inhalación del humo de leña. *Acta Med Colomb*. 1983;8:191–2014.
49. González M, Páez S, Jaramillo C, Barrero M, Maldonado D. Enfermedad pulmonar obstructiva crónica (EPOC) por humo de leña en mujeres. *Acta Med Colomb*. 2004;29:17–25.
50. Ramirez-Venegas A, Sansores RH, Quintana-Carrillo RH, Velazquez-Uncal M, Hernandez-Zenteno RJ, Sanchez-Romero C, et al. FEV1 decline in patients with chronic obstructive pulmonary disease associated with biomass exposure. *Am J Respir Crit Care Med*. 2014;190:996–1002.
51. Golpe R, Sanjuan Lopez P, Cano Jimenez E, Castro Anon O, Perez de Llano LA. Distribution of clinical phenotypes in patients with chronic obstructive pulmonary disease caused by biomass and tobacco smoke. *Arch Bronconeumol*. 2014;50:318–24.
52. Palacios DM, Méndez O. Neumopatía por humo de leña. Un estudio en autopsias. *Biomédica*. 1998;18:153–60.
53. Moreira MA, Moraes MR, Silva DG, Pinheiro TF, Vasconcelos Junior HM, Maia LF, et al. Comparative study of respiratory symptoms and lung function alterations in patients with chronic obstructive pulmonary disease related to the exposure to wood and tobacco smoke. *J Bras Pneumol*. 2008;34:667–74.
54. Gonzalez-García M, Maldonado Gomez D, Torres-Duque CA, Barrero M, Jaramillo Villegas C, Perez JM, et al. Tomographic and functional findings in severe COPD: comparison between the wood smoke-related and smoking-related disease. *J Bras Pneumol*. 2013;39:147–54.
55. Gonzalez-García M, Torres-Duque CA, Bustos A, Jaramillo C, Maldonado D. Bronchial hyperresponsiveness in women with chronic obstructive pulmonary disease related to wood smoke. *Int J Chron Obstruct Pulmon Dis*. 2012;7:367–73.
56. Ramirez-Venegas A, Sansores RH, Perez-Padilla R, Regalado J, Velazquez A, Sanchez C, et al. Survival of patients with chronic obstructive pulmonary disease due to biomass smoke and tobacco. *Am J Respir Crit Care Med*. 2006;173:393–7.
57. Golpe R, Mengual-Macénille N, Sanjuan-Lopez P, Cano-Jimenez E, Castro-Anon O, Perez-de-Llano LA. Prognostic indices and mortality prediction in COPD caused by biomass smoke exposure. *Lung*. 2015;193:497–503.
58. Rivera RM, Cosio MG, Ghezzi H, Salazar M, Perez-Padilla R. Comparison of lung morphology in COPD secondary to cigarette and biomass smoke. *Int J Tuberc Lung Dis*. 2008;12:972–7.
59. Moreira MA, Barbosa MA, Queiroz MC, Teixeira KI, Torres PP, Santana Junior PJ, et al. Pulmonary changes on HRCT scans in non-smoking females with COPD due to wood smoke exposure. *J Bras Pneumol*. 2013;39:155–63.
60. Sertogullarindan B, Gumrukcuoglu HA, Sezgi C, Akil MA. Frequency of pulmonary hypertension in patients with COPD due to biomass smoke and tobacco smoke. *Int J Med Sci*. 2012;9:406–12.
61. Sandoval J, Salas J, Martinez-Guerra ML, Gomez A, Martinez C, Portales A, et al. Pulmonary arterial hypertension and cor pulmonale associated with chronic domestic woodsmoke inhalation. *Chest*. 1993;103:12–20.
62. González-García M, Gómez V, Perlaza I, Casas A. Diferencias en el impacto sobre el estado de salud entre la EPOC por cigarrillo y por humo de leña. *Arch Bronconeumol*. 2014;50:59. Número especial, Congreso ALAT.
63. Gelb AF, Zamel N, Hogg JC, Muller NL, Schein MJ. Pseudophysiological emphysema resulting from severe small-airways disease. *Am J Respir Crit Care Med*. 1998;158:815–9.
64. Mehra D, Geraghty PM, Hardigan AA, Foronjy R. A comparison of the inflammatory and proteolytic effects of dung biomass and cigarette smoke exposure in the lung. *PLoS ONE*. 2012;7:e52889.
65. Kim YJ, Jung CY, Shin HW, Lee BK. Biomass smoke induced bronchial anthracofibrosis: presenting features and clinical course. *Respir Med*. 2009;103:757–65.
66. Gupta A, Shah A. Bronchial anthracofibrosis: an emerging pulmonary disease due to biomass fuel exposure. *Int J Tuberc Lung Dis*. 2011;15:602–12.
67. Kim H, Cha S-I, Shin K-M, Lim J-K, Oh S, Kim MJ, et al. Clinical relevance of bronchial anthracofibrosis in patients with chronic obstructive pulmonary disease exacerbation. *Tuberc Respir Dis (Seoul)*. 2014;77:124–31.
68. Kocbach A, Li Y, Yttri KE, Cassee FR, Schwarze PE, Namork E. Physicochemical characterisation of combustion particles from vehicle exhaust and residential wood smoke. Part Fibre Toxicol. 2006;3:2006.
69. Sahu S, Tiwari M, Bhangare R, Pandit G. Particle size distribution of mainstream and exhaled cigarette smoke and predictive deposition in human respiratory tract. *Aerosol Air Qual Res*. 2013;13:324–32.
70. Silva R, Oyarzun M, Olloquequi J. Pathogenic mechanisms in chronic obstructive pulmonary disease due to biomass smoke exposure. *Arch Bronconeumol*. 2015;51:285–92.
71. Snider GL. Nosology for our day: its application to chronic obstructive pulmonary disease. *Am J Respir Crit Care Med*. 2003;167:678–83.
72. Global Strategy for the Diagnosis, Management and Prevention of COPD. Global Initiative for Chronic Obstructive Lung Disease (GOLD); 2015. Available at: <http://www.goldcopd.org> [accessed 03.09.15].
73. Tan WC, Sin DD, Bourbeau J, Hernandez P, Chapman KR, Cowie R, et al. Characteristics of COPD in never-smokers and ever-smokers in the general population: results from the CanCOLD study. *Thorax*. 2015;70:822–9.
74. Agusti A. Phenotypes and disease characterization in chronic obstructive pulmonary disease. Toward the extinction of phenotypes? *Ann Am Thorac Soc*. 2013;10 Suppl.:S125–30.