

Clinical Image

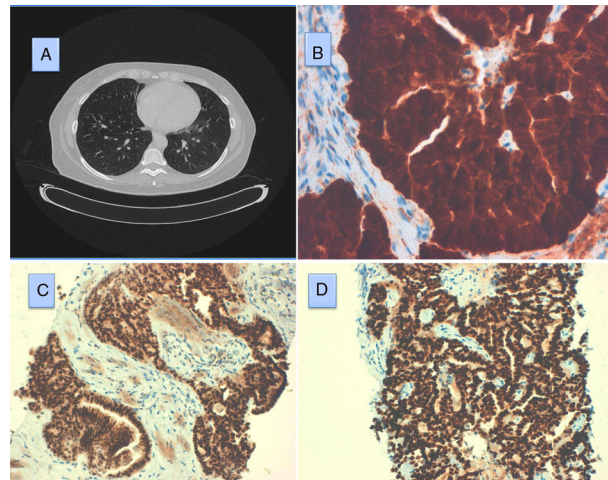
**Pulmonary Metastasis of Cribriform-Morular Variant of Thyroid Carcinoma**

**Metástasis pulmonar de la variante cribiforme-morular de carcinoma tiroideo**

Juan Laforga<sup>a,\*</sup>, Teresa Pedro<sup>b</sup>

<sup>a</sup> Department of Pathology, Hospital de Dénia, Spain

<sup>b</sup> Department of Endocrinology, Hospital de Dénia, Spain



**Fig. 1.** (A) Thorax computed tomography scan showing bilateral multiple nodules. (B) Tumor cells showing strong, diffuse staining for  $\beta$ -catenin.  $\beta$ -Catenin 400 $\times$ . (C) Diffuse staining of tumor cell nuclei with thyroid transcription factor (TTF-1). TTF-1, 200 $\times$ . (D) Tumor cells showing diffuse, strong staining with progesterone receptors. Progesterone receptor, 200 $\times$ .

Cribriform-morular variant of thyroid carcinoma (CMV-TC) is an uncommon variant of papillary thyroid carcinoma.<sup>1</sup> The immunohistochemical phenotype is thyroid transcription factor (TTF-1+) with focal staining for thyroglobulin, cytokeratin 7 (CK7) and CK19. The hallmark feature, however, is strong staining for  $\beta$ -catenin. CMV-TC metastasizes to the regional lymph nodes in 10% of patients and to distant sites in 6%.<sup>2</sup> We report a case of sporadic CMV-TC in a 45-year-old woman with regional lymph node metastases and, 7 years after diagnosis, lung metastases. Thoracic CT showed multiple bilateral nodules measuring up to 2 cm in diameter. In 2018, a chest CT scan revealed a significant increase in nodule size and multiple lesions in the left lower lobe (Fig. 1A). The

lesions were positive by PET and a lung core biopsy was performed. The immunohistochemical study showed strong, diffuse positivity for  $\beta$ -catenin, TTF-1, ER and PR (Fig. 1B–D), all characteristic findings in CMV-TC.

**References**

- Rosai J, Albores Saavedra J, Asiola S, et al. Papillary thyroid carcinoma. In: Lloyd RV, Osamura RY, Klöppel G, et al., editors. World Health Organization Classification of Tumors. Pathology and genetics of tumours of endocrine organs. 4th ed. Lyon: IARC Press; 2017. p. 81–91.
- Cameselle-Teijeiro JM, Peteiro-González D, Caneiro-Gómez J, Sánchez-Ares M, Abdulkader I, Eloy C, et al. Cribriform-morular variant of thyroid carcinoma: a neoplasm with distinctive phenotype associated with the activation of the WNT/ $\beta$ -catenin pathway. *Mod Pathol.* 2018;31:1168–79.

\* Corresponding author.

E-mail address: jblaforga@gmail.com (J. Laforga).