

Clinical Image

DIPNECH: When Computed Tomography May Suggest the Diagnosis  
DIPNECH: cuando la tomografía computerizada puede sugerir el diagnóstico

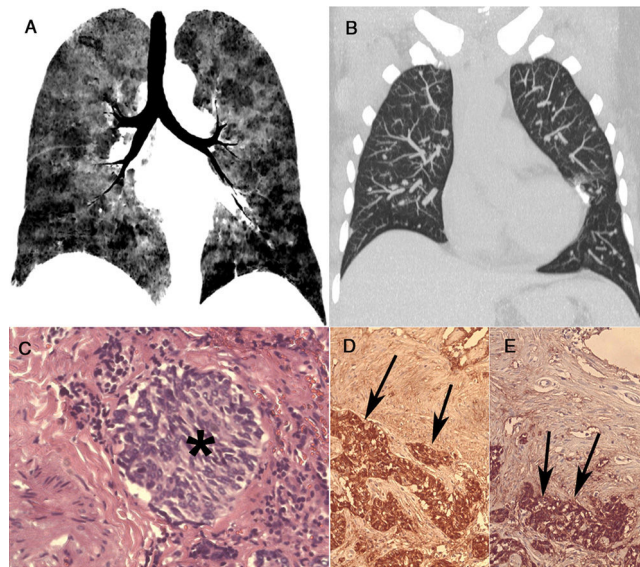


Pedro Paulo Teixeira e Silva Torres<sup>a</sup>, Luciana Ximenes Salustiano<sup>b</sup>, Edson Marchiori<sup>c,\*</sup>

<sup>a</sup> Multimagem Diagnósticos, Goiânia – Goiás, Brazil

<sup>b</sup> Laboratório CAPC, Goiânia – Goiás, Brazil

<sup>c</sup> Universidade Federal do Rio de Janeiro, Rio de Janeiro, Brazil



**Fig. 1.** A coronal minimum-intensity projection reformatting image (A) demonstrates mosaic attenuation with sharply defined lobular areas of low attenuation due to small airway obstruction (consistent with air trapping). A coronal maximum-intensity projection image (B) shows multiple bilateral small nodules, probably corresponding to tumorlets. A histopathological section (C) demonstrates a nodular aggregate (tumorlet) (asterisk) of atypical oval cells (hematoxylin and eosin staining,  $\times 100$ ). The tumoral cells expressed immunohistochemical positivity for synaptophysin (arrows) (D) and chromogranin A (arrows) (E), characterizing neuroendocrine cell proliferation.

A 66-year-old nonsmoking woman presented with chronic dry cough, wheezing and dyspnea. She had previously been diagnosed with bronchial asthma. Chest computed tomography (CT) showed multiple bilateral small nodules and a diffuse mosaic attenuation pattern (Fig. 1A and B). Pulmonary function tests demonstrated an obstructive ventilatory pattern. Video-assisted thoracoscopic biopsy showed the proliferation of small, pale staining cells. Immunohistochemical staining revealed synaptophysin and chromogranin A positivity (Fig. 1C–E), supporting the diagnosis of diffuse idiopathic pulmonary neuroendocrine cell hyperplasia (DIPNECH).

DIPNECH is characterized by respiratory symptoms (cough, dyspnea and wheezing), airflow obstruction, mosaic attenuation with air trapping on chest CT, and often the nodular proliferation of neuroendocrine cells

with or without tumorlets or carcinoid tumors on histology. Its diagnosis is more difficult in asymptomatic patients, especially those undergoing CT for cancer follow-up, in whom nodules must not be mistaken for diffuse lung metastases.<sup>1,2</sup> In the appropriate clinical (e.g., middle-aged non-smoking women with obstructive ventilatory defects) and radiological (e.g., combination of small nodules, features of constrictive bronchiolitis and mosaic attenuation) settings, the diagnosis of DIPNECH syndrome may be suggested. However, its confirmation requires histopathological analysis. On immunohistochemistry, the lesions express the most common markers of neuroendocrine cells, particularly chromogranin A and synaptophysin.<sup>1,2</sup>

References

- Chassagnon G, Favalle O, Marchand-Adam S, De Muret A, Revel MP. DIPNECH: when to suggest this diagnosis on CT. *Clin Radiol.* 2015;70:317–25, <http://dx.doi.org/10.1016/j.crad.2014.10.012>
- Rossi G, Cavazza A, Spagnolo P, Sverzellati N, Longo L, Jukna A, et al. Diffuse idiopathic pulmonary neuroendocrine cell hyperplasia syndrome. *Eur Respir J.* 2016;47:1829–41, <http://dx.doi.org/10.1183/13993003.01954-2015>

\* Corresponding author.

E-mail address: [edmarchiori@gmail.com](mailto:edmarchiori@gmail.com) (E. Marchiori).