



Recommendations of SEPAR

Guideline on Management of Solitary Pulmonary Nodule[☆]

Carlos J. Álvarez Martínez (coord.),^{a,*} Gorka Bastarrika Alemañ,^{b,c} Carlos Disdier Vicente,^d Alberto Fernández Villar,^e Jesús R. Hernández Hernández,^f Antonio Maldonado Suárez,^g Nicolás Moreno Mata,^h Antoni Rosell Gratacósⁱ

^a Servicio de Neumología, Hospital Universitario 12 de Octubre, Madrid, Spain, CIBERES

^b Cardiothoracic Imaging Division, University of Toronto, Sunnybrook Health Sciences Centre, Toronto, Canada

^c Servicio de Radiología, Clínica Universidad de Navarra, Pamplona, Spain

^d Servicio de Neumología, Hospital Universitario Valladolid, Valladolid, Spain

^e Servicio de Neumología, Hospital de Vigo, Vigo, Spain

^f Servicio de Neumología, Complejo Asistencial de Ávila, Hospital de Ávila, Ávila, Spain

^g Servicio de Medicina Nuclear, Hospital Universitario Quirón, Madrid, Spain

^h Servicio de Cirugía Torácica, Hospital Virgen Rocío, Sevilla, Spain

ⁱ Servicio de Neumología, Hospital Universitario de Bellvitge, Barcelona, Spain

ARTICLE INFO

Article history:

Received 3 October 2013

Accepted 24 January 2014

Available online 14 June 2014

Keywords:

Solitary pulmonary nodule

Subsolid nodule

Subcentimeter nodule

Lung cancer

ABSTRACT

The aim of the proposed recommendations is to be a tool to facilitate decision-making in patients with a solitary pulmonary nodule (SPN). For an optimal decision, accessibility to the different diagnostics techniques and patient preferences need to be incorporated.

The first assessment, which includes a chest computed tomography scan, separates a group of patients with extrapulmonary neoplasm or a high surgical risk who require individualized management. Another two groups of patients are patients with SPN up to 8 mm and those who have a subsolid SPN, for which specific recommendations are established.

SPNs larger than 8 mm are classified according to their probability of malignancy into low (less than 5%), where observation is recommended, high (higher than 65%), which are managed with a presumptive diagnosis of localized stage carcinoma, and intermediate, where positron emission tomography-computed tomography has high yield for reclassifying them into high or low probability. In cases of intermediate or high probability of malignancy, transbronchial needle aspiration or biopsy of the nodule may be an option.

Radiologic observation with low radiation computed tomography without contrast is recommended in SPN with low probability of malignancy, and resection with videothoracoscopy in undiagnosed cases with intermediate or high probability of malignancy.

© 2013 SEPAR. Published by Elsevier España, S.L. All rights reserved.

Normativa sobre el manejo del nódulo pulmonar solitario

RESUMEN

Las recomendaciones que se proponen pretenden ser un instrumento que facilite la toma de decisiones en pacientes con nódulo pulmonar solitario (NPS). Para una decisión óptima hay que incorporar la accesibilidad a las distintas técnicas diagnósticas y las preferencias del paciente.

La primera valoración, que incluye la tomografía computarizada torácica, separa a un grupo de pacientes con neoplasia extrapulmonar o muy alto riesgo quirúrgico que requieren manejo individualizado. Otros 2 grupos son los pacientes con NPS de hasta 8 mm y los que tienen NPS subsólido, para los que se establecen recomendaciones específicas.

Palabras clave:

Nódulo pulmonar solitario

Nódulo subsólido

Nódulo subcentimétrico

Cáncer de pulmón

[☆] Please cite this article as: Álvarez Martínez CJ, Bastarrika Alemañ G, Disdier Vicente C, Fernández Villar A, Hernández Hernández JR, Maldonado Suárez A, et al. Normativa sobre el manejo del nódulo pulmonar solitario. Arch Bronconeumol. 2014;50:285–293.

* Corresponding author.

E-mail addresses: carlosjose.alvarez@salud.madrid.org, cam02m@gmail.com (C.J. Álvarez Martínez).

Los NPS mayores de 8 mm se clasifican según su probabilidad de malignidad en baja (menor del 5%) donde se recomienda observación, alta (mayor del 65%) que se manejan con el diagnóstico de presunción de carcinoma en estadio localizado, e intermedia, donde la tomografía de emisión de positrones tiene gran rendimiento para reclasificarlos en alta o baja probabilidad. En los casos de probabilidad de malignidad intermedia o alta puede ser una opción la punción o biopsia transbronquial del nódulo.

Se recomienda la observación radiológica con tomografía computarizada de baja radiación y sin contraste en el NPS con baja probabilidad de malignidad, y la resección con videotoracoscopia en los casos no diagnosticados y con probabilidad de malignidad intermedia o alta.

© 2013 SEPAR. Publicado por Elsevier España, S.L. Todos los derechos reservados.

Objectives

The aim of these guidelines is to facilitate decision making in the treatment of patients with a solitary pulmonary nodule (SPN).^{1–3} These guidelines are not intended to be rigid, since the treatment of SPN is an example of how estimation of the probability of malignancy (PM), access to the various diagnostic and therapeutic techniques and patient preferences work together to mold the optimal decision. This process should be individualized in the clinical setting and for each particular situation. Since accessibility to some diagnostic techniques may vary, depending on the setting, a general strategic algorithm is proposed (Fig. 1) with two alternatives, depending on the degree of accessibility to positron emission tomography (PET) (Figs. 2 and 3). The recommendations have been graded according to strength (strong 1, weak 2) based on the relationship between the foreseeable benefits and the risks for the patient; and the quality of the scientific evidence, as high (A), moderate (B), low (C) or very low (D), according to the GRADE system.⁴ A summary of these recommendations^{2,4,6} is given in Table 1. The extended version of these recommendations is available as an online supplement, along with additional tables and figures (S) (Appendix 1).

Introduction: Concept and Etiology

SPN is defined as a single, spherical, distinct, radiological opacity with a long axis of ≤ 30 mm, primarily surrounded by aerated lung and without associated atelectasis, hilar enlargement or pleural effusion.^{1–3} SPNs may be observed on chest X-ray or chest computed tomography (CT) performed to study other diseases or for diagnostic screening for lung cancer (LC).^{3,6,7} Millimetric nodules (≤ 8 mm in diameter)^{1,2,6} and subsolid nodules (SSNs)^{2,5} (Fig. 4), requiring different management,^{5–7} may be detected on CT (Fig. 1). SSNs include both ground glass nodules and partially solid nodules that combine a ground glass component with a solid component.^{2,5–7}

Nodules are estimated to occur at a rate of 1 or 2 per 1000 X-rays.^{1,3,8} The prevalence of nodules on CTs performed in adult smokers for LC screening is very high, between 20% and 50%, and are generally less than 10 mm in size; the incidence in successive annual CTs is 10%.^{1,3,6,7}

When evaluating SPNs with CT, other small nodules are often found. When they are few or one is clearly dominant, they should be considered as independent SPNs, since, even if the situation is LC, accompanying subcentimeter nodules are commonly benign.^{1,2,6,7} Moreover, in up to 20% of cases, the malignant nodule is not the largest.⁷

SPN is the radiological manifestation of many diseases³ (online Appendix–Table 1S). However, most nodules are caused by pulmonary malignancies, granulomas and hamartomas.¹ The prevalence of malignancy varies between series^{8,9}: from between 5% and 70%, depending on whether the figures are retrieved from health checks or studies of diagnostic techniques, and to a lesser extent in SPNs detected in LC screening programs, where the

Table 1

Recommendations for the Management of Solitary Pulmonary Nodule.

SPN initial evaluation	
All decisions on the management of an SPN must include the opinion and preferences of the appropriately informed patient	1C
Evaluate stability or growth in previous radiological studies if available	1C
Stability for more than 2 years in solid SPN and benign calcification indicate benignancy and do not require further evaluation	2C
CT, with thin sections through lesion of interest, is essential for the initial evaluation of indeterminate SPN	1B
SPN in patients with previous or concomitant malignancy require individualized management and evaluation	1C
SPNs in inoperable patients require individualized management	1C
SPNs will be classified as solid nodules >8 mm, solid nodules ≤ 8 mm and subsolid nodules	1B
Solid nodules >8 mm	
Should be classified according to PM: low (<5%), intermediate or high (>65%)	2C
SPN with low PM: radiological observation	2C
Radiological observation: low-radiation CT without contrast at 3–6, 9–12 and 24 months	2C
SPN with intermediate PM: PET-CT	1B
Negative PET-CT: radiological observation	2C
SPNs with intermediate PM: biopsy-aspiration is an acceptable alternative	2C
No histological diagnosis: PET-CT	1B
Biopsy or aspiration is advisable in case of discordance between clinical PM and imaging tests	2C
Suspected etiology requiring medical treatment (e.g. tuberculosis)	
Patients refusing or objecting to diagnostic surgery	
SPN with high PM: management according to presumed diagnosis of early stage carcinoma	2C
SPN with high PM: FB with bronchial examination and transbronchial biopsy	2D
Non-diagnosed SPN with PM greater than low in operable patients: SPN resection	2C
Recommended technique: video-assisted thoracoscopy	1C
Interoperative biopsy to establish type of resection	
Subcentimeter PNs associated with SPN should not be contraindication for curative carcinoma surgery unless there is confirmation of metastasis.	2C
SPN <8 mm	
Observation strategy following recommendations of the Fleischner Society (Fig. 1)	2C
Low-dose, non-contrast CT surveillance	1C
Subsolid SPNs	
Intervention according to recommendations of the Fleischner Society (Table 2)	1B to 2C
Low-dose, non-contrast CT surveillance	1C

FB: fibroscopy; PN: pulmonary nodule; SPN: solitary pulmonary nodule; PET: positron emission tomography; PM: probability of malignancy; CT: computed tomography.

^a Grade of recommendation by strength (strong 1, or weak 2) and quality of scientific evidence as high (A), moderate (B), low (C) or very low (D), according to the GRADE system.

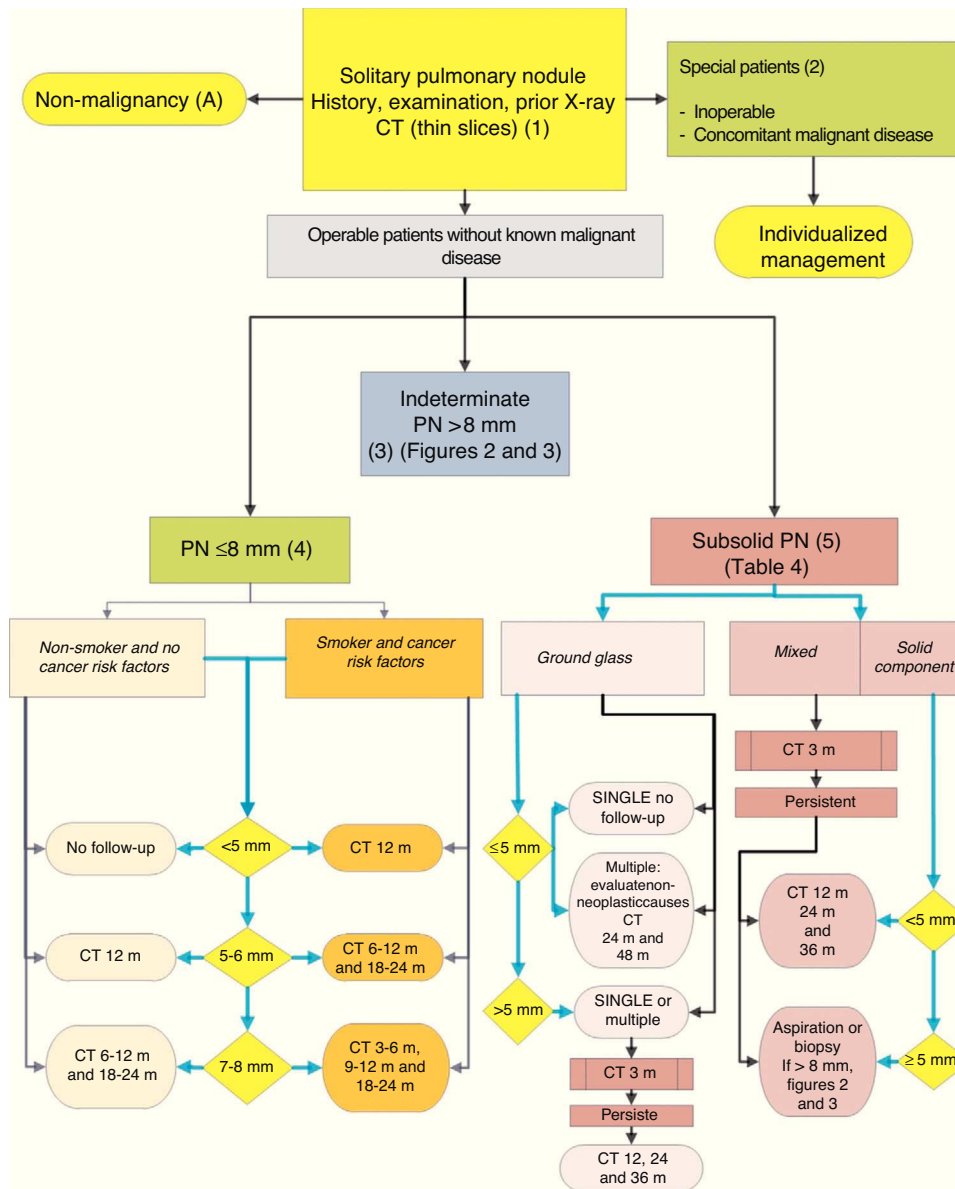


Fig. 1. Algorithm for the management of PN: initial classification and observation of SPN ≤ 8 mm and subsolid SPN. m: months, PN: pulmonary nodule; SPN: solitary pulmonary nodule; CT: computed tomography, including thin sections. Follow-up with low-radiation CT, provided no growth is detected. Numbers and letters in brackets refer to the sections in the text where they are discussed.

prevalence is 1%–10%, depending on nodule size.^{3,7} The PM of SPNs increases notably in patients with previous tumor disease.^{3,10}

Most malignant SPNs are LC, most frequently adenocarcinomas and large cell carcinomas.^{2,3} In malignant SSN, the most common strains are in the adenocarcinoma spectrum,^{5,11,12} ranging between atypical adenomatous hyperplasia in the smallest nodules, adenocarcinoma in situ, minimally invasive adenocarcinoma and invasive adenocarcinomas, if a solid component is present, particularly in mucinous nodules and those with lepidic growth.^{5,11,12}

Diagnostic Techniques in the Study of Solitary Pulmonary Nodule

Chest Computed Tomography

This technique is vastly superior to standard X-ray in the evaluation of SPNs.^{2,3} It can detect other nodules and mediastinal

lymphadenopathies, diagnose pseudonodules (extraparenchymal lesions) and help in planning nodule biopsy or aspiration. In some cases, it can provide a specific diagnosis, such as arteriovenous malformations, mycetomas, rounded atelectasis or hamartomas. Accordingly, CT is essential as the index examination for the study of SPNs.²

Nodule enhancement or contrast material uptake showed a sensitivity of 98% for malignancy with a cutoff of >15 Hounsfield units (HU) and a specificity of 58%.¹³ This is applicable to spherical, homogeneous SPNs >8 mm, without fat, calcium cavitation or necrosis. This may be valuable in centers with expertise in this technique, but due to the introduction of PET its use has not become widespread.³

Positron Emission Tomography

One of the major indications for PET-CT with ^{18}F -deoxy-D-glucose is the study of SPNs. Mean sensitivity for solid SPNs >10 – 15 mm is 0.93 (confidence interval [CI] 0.90–0.95), and

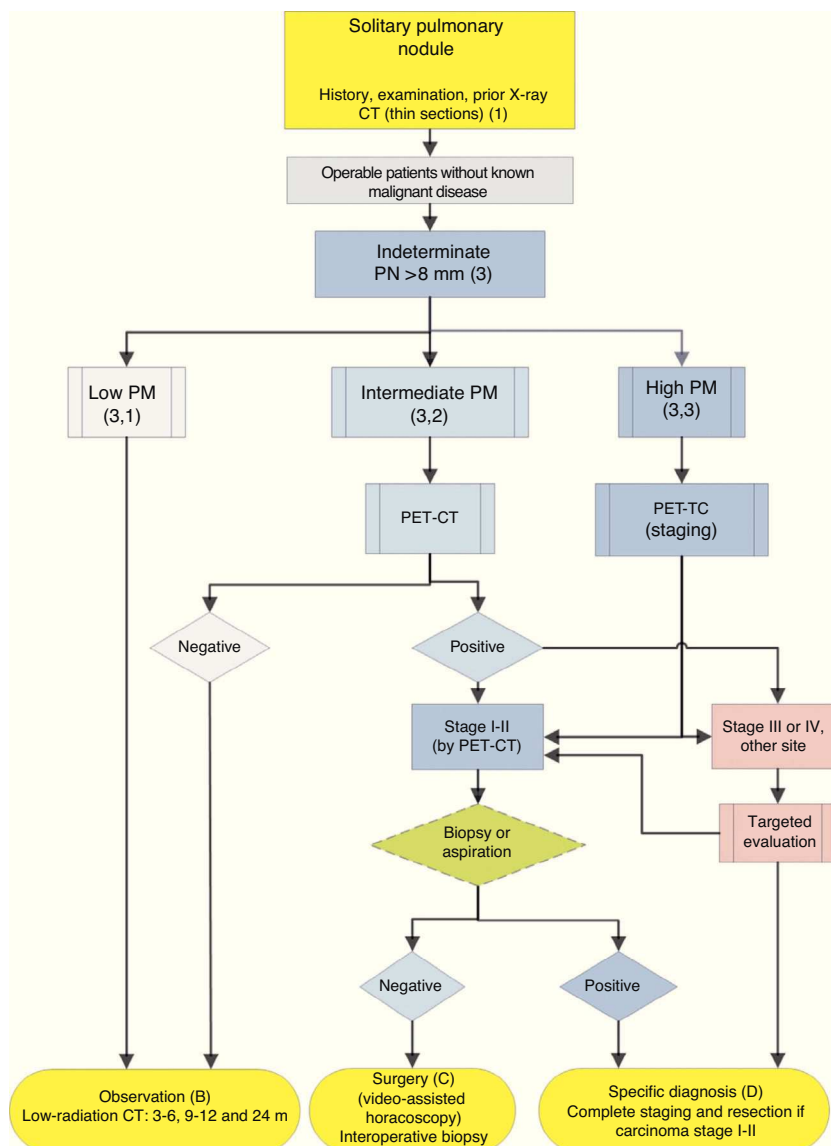


Fig. 2. Algorithm for the management of PN>8 mm: clinical setting with easy access to PET-CT. m: months, PN: pulmonary nodule; SPN: solitary pulmonary nodule; PET-CT: positron emission tomography with computed tomography; PM: probability of malignancy; CT: chest computed tomography, including thin sections. Follow-up with low-radiation CT, provided no growth is detected. Numbers and letters in brackets refer to the sections in the text where they are discussed.

mean specificity is 0.8 (CI 0.74–0.85).^{2,14,15} False negatives on PET-CT are associated with defective technique, tumor diameter <7 mm, carcinoid tumors, subsolid nodules and some adenocarcinomas, particularly in situ, minimally invasive, lepidic growth, or mucinous adenocarcinomas.^{2,3} False positives are more common and include inflammatory and infectious lesions, such as granulomas, tuberculosis, mycosis or pneumonias.^{2,16}

PET-CT is of most use in SPNs >8 mm with intermediary PM: a negative study greatly reduces PM.³ In a positive PET-CT, a greater standardized uptake value (SUV) indicates greater tumor aggressivity and a poorer prognosis for the patient, although its reduced specificity, and thus the chance of a false positive, must be taken into account.^{17,18} It can also help select the most efficient and accessible site for biopsy and help, if necessary, in planning radiation therapy.¹⁹ PET-CT contributes to cancer staging^{2,3} by evaluating mediastinal and systemic metastasis, and is recommended in many LC management guidelines.^{17,18,20} In these recommendations, PET-CT is used in two ways: as a tool for

characterizing the SPN and as a staging technique in SPNs with high PM.

Cytohystological Sampling of Solitary Pulmonary Nodule

Computed Tomography, Radioscopy or Ultrasound-Guided Fine Needle Transthoracic Aspiration

An analysis of the literature on 48 studies shows good sensitivity, 86% (CI 84%–88%), for the diagnosis of malignancy and very good specificity, 99% (CI 98%–99%).²¹ In SPNs smaller than 15 mm, sensitivity is lower, at 70%–82%.^{2,22} In benign disease, specificity is also lower.²¹ The mean rate of pneumothorax was 15%, of which 7% required drainage.^{2,21,23} Transthoracic aspiration is contraindicated in cases of poor patient collaboration, very compromised respiratory function or single lung or hemorrhagic diathesis, and in the presence of emphysema or extensive bullae in the region of the nodule. Between 4% and 50% of the results do not provide a diagnosis, and up to 20% are false negatives.² If PM is high, the rate

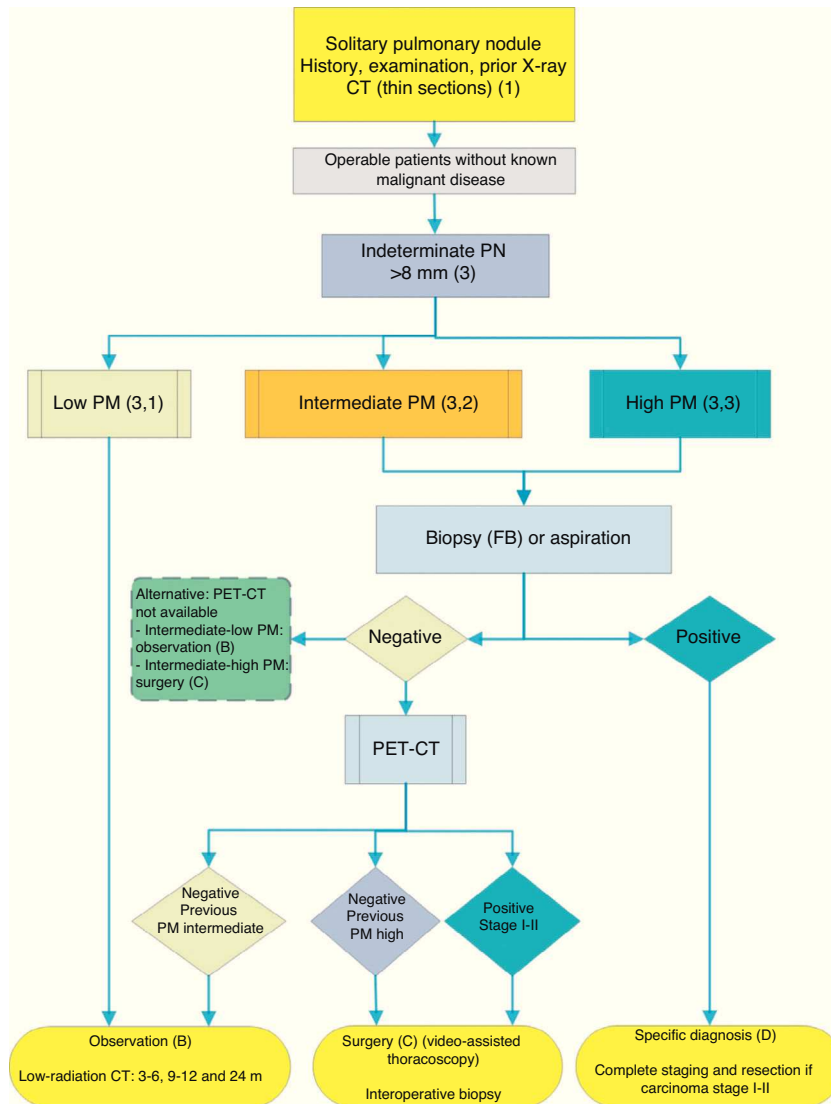


Fig. 3. Algorithm for the management of PN>8 mm: clinical setting with difficult access to PET-CT or preference for cytohistological study of SPN. FB: fiberoptic bronchoscopy and guided biopsy; m: months; SPN: solitary pulmonary nodule; PET-CT: positron emission tomography with computed tomography; PM: probability of malignancy; CT: chest computed tomography, including thin sections. Follow-up with low-radiation CT, provided no growth is detected. Numbers and letters in brackets refer to the sections in the text where they are discussed.

of true negatives is the same as that of false negatives, so it is not useful for excluding malignancy.²

Fiberoptic Bronchoscopy and Associated Techniques

In LC, the diagnostic yield of CT-guided transbronchial aspiration (TBA) to target the nodule ranges, according to the series, from 20% to 80%, and is lower in SPNs smaller than 20 mm, where the mean yield is 30%.² In benign SPNs, the yield is 10%. This technique is more effective in larger central nodules (>20 mm) using an air bronchogram.^{2,24} There is little risk of TBA: pneumothorax, 2%,² and more rarely, hemoptysis or hematomas. Although the diagnostic yield for SPNs is less than that obtained with transthoracic fine needle aspiration-biopsy (FNAB), an endobronchial examination can be carried out before planning LC surgery.²⁵ Ultra-fine bronchoscopies for better access to lesions, guide sheaths for positioning the forceps, radial probe ultrasound endobronchoscopy, electromagnetic navigation bronchoscopy and navigation bronchoscopy are all under evaluation, being techniques that allow the forceps to be guided toward the nodule, thus improving yield.^{2,26} These techniques have been compared in a meta-analysis²⁶: the combined yield was 70%, better than in previous radioscopy-guided series,

and the yields of the individual techniques ranged from 68.5% to 73%, although wide variability and heterogeneity were observed among the studies. The yield was lower in SPNs<20 mm, 61% versus 80% in >20 mm. Combining techniques may improve the yield somewhat.² As can be seen from these data, no technique in particular outperforms others in terms of yield, and the recommendation is that each center should use the techniques for which both equipment and expertise are available.

Video-assisted Thoracoscopy and Thoracotomy

SPNs can be resected using these techniques.² If the SPNs are small or located deep in the parenchyma, they can be previously dyed or marked with a hookwire, generally with CT-guided transthoracic puncture. The risks of video-assisted thoracoscopy are low and mortality is very rare (less than 1%), morbidity is low, and the diagnostic yield is good, similar to thoracotomy but with lower mortality.² When the SPN is LC, if the clinical situation of the patient permits, anatomical resection is indicated: in general, lobectomy and mediastinal node dissection are recommended.^{2,20,27}

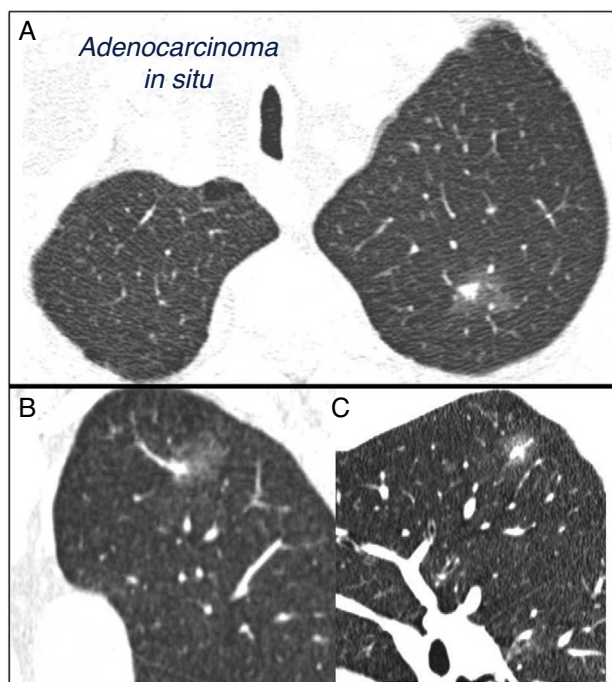


Fig. 4. Mixed subsolid solitary pulmonary nodule in the left upper lobe. Chest computed tomography with 2 mm thin sections in a patient with a solitary pulmonary nodule in the left upper lobe. Axial slice (A) in upper lobes and coronal (B) and sagittal (C) reconstructions in the left upper lobe. An 18-mm ground-glass solitary pulmonary nodule is observed, with a 7-mm solid component in the interior. Resection by video-assisted thoracoscopy revealed adenocarcinoma.

Estimation of the Probability of Malignancy

Malignant SPNs differ from benign SPNs in certain clinical and radiological aspects, described in more detail in the extended version of these guidelines (see online supplement). The factors most closely associated with malignancy are the size of the SPN, margin features, density, patient age, accumulated tobacco consumption, existence of other malignancy and detection of growth.^{2,3,6,7,10,28-30} Central, laminar or total calcification of the SPN is considered a good criterion for benignancy,^{2,3} as is radiological stability for more than 24 months, implying a doubling time of over 730 days. This criterion is not valid for SSN, for which the observation must be extended to at least 3 years.^{1-3,5}

Most clinicians estimate PM intuitively, but several SPN models and classification rules have been proposed^{7,28-32} and there are even calculators available online (online Appendix–Table 2S) or as a smartphone application (Medcalc medical calculator). Table 2S of the online Appendix gives a set of formulas obtained from different logistical models and Figure 1S is a valid nomogram for SPNs in chest X-ray.

This estimation of PM guides the subsequent diagnostic process.^{1,2,31} Logically, when predicting malignancy, the results of all the examination techniques are reviewed, including the PET-CT results,^{31,32} the biopsy or aspiration results and the evaluation of growth, if suitable images are available.

Along with PM, the foreseeable benefits and risks of the treatment must be assessed. There is a threshold PM indicating observation, i.e., any PM for which the most reasonable option is prospective observation of the stability or growth of the SPN; and a threshold for surgery, for which surgery is clearly recommended since the probability of early stage cancer is high. These thresholds depend on the expected benefits; for example, probability of cure or treatment response in cases of malignant disease, the surgical

risks, that may vary between patients and the personal attitude and preference of the patient.¹

Sequential Evaluation of the Solitary Pulmonary Nodule

The aim of evaluating an SPN is to diagnose and treat SPNs that represent active disease, in particular LC, since 5-year survival is 70%–80% in early stage disease.²⁰ Another aim is to avoid submitting patients with granulomas, hamartomas and other benign lesions to costly and risky treatments. There is no singly accepted procedure. The key elements for evaluation are estimation of the probability of malignancy, accessibility to different diagnostic tests and the expertise of clinicians in these techniques, and the preferences of the patient.^{1,2}

Figs. 1–3 show the proposed sequential evaluation of SPN: Fig. 1 describes the initial classification by SPN size, density and solidity or subsolidity, separating patients who require individualized management and those who can be diagnosed from the outset. Figs. 2 and 3 describe the proposed strategy for indeterminate solid SPNs >8 mm, depending on whether access to PET-CT is easy (Fig. 2) or more difficult (Fig. 3).

Clinical and Initial Radiological Evaluation (1)

The initial examination comprises history, examination and the evaluation of the radiological features, along with comparison with all available prior X-rays^{2,31}: *grade of recommendation, 1C.*

If there is no evidence of stability for >2 years or benign calcification, CT with thin sections through the nodule of interest is indicated²: *grade of recommendation, 1B.*

Some nodules can be classified in this phase as benign if they are seen to be stable for more than 2 years or from their features on CT^{2,31}: *grade of recommendation, 2C.*

In indeterminate SPNs, surveillance will continue, depending on the patient characteristics and the radiological features of the nodule.

Patients in Special Situations (2)

A patient's situation may be considered special because of a change in the etiological frequency or the PM of the SPN, or because the procedure is limited to non-invasive techniques due to surgical risks.

Patients with prior or concomitant malignant disease. The PM of pulmonary nodules, whether single or multiple, increases greatly in these patients,^{3,10} even if they are small.⁶ The possibility of metastasis is even greater if the SPNs were not previously present. Nevertheless, when the SPNs are subcentimetric, up to one-third are benign, so the diagnosis must be confirmed with biopsy, aspiration or video-assisted thoracoscopy before denying potentially curative treatments: *grade of recommendation, 2C.*^{2,10} SPNs in immunocompromised patients will require individualized evaluation, and biopsy or aspiration is preferred.³³

In inoperable patients, the evaluation of SPN is limited. Biopsy or aspiration is indicated in cases with high PM or positive results on PET, for guiding chemotherapy or radiation therapy if treatment of LC is required: *grade of recommendation, 2C.*

Solitary Pulmonary Nodule >8 mm (3) (Figs. 2 and 3)

The first step is to classify the patient according to the estimated PM: low (<5%), intermediate or high (>65%)^{1,2,29,31}: *grade of recommendation, 1C.*

Low Probability of Malignancy (3, 1)

Low PM is that estimated at less than 5%.^{2,31} This includes SPNs that are still small (<10–15 mm), with distinct margins, younger patients (<40 years), low total tobacco consumption and, of course, no extrapulmonary malignant disease.^{2,28–32,34} In these cases, radiological observation is recommended^{2,31}: *grade of recommendation, 2C*.

Also included are SPNs with intermediate PM and negative PET-CT or those evaluated with FNAB showing non-malignancy²: *grade of recommendation, 2C*.

Intermediate Probability of Malignancy (3, 2)

A PM of between 5% and 65% is considered intermediate.^{2,28–32,34} In these cases, PET-CT, being non-invasive, low risk and of high discriminatory power, is recommended (Fig. 2): *grade of recommendation, 1B*. A negative result reduces the PM considerably, and observation may be recommended; a positive result increases PM and classifies it as high.^{2,31}

Depending on accessibility and wait times for performing PET-CT, an alternative procedure is CT-guided FNAB or fiberoptic bronchoscopy (FB)-TBA guided by radioscopy, ultrasound endoscopy or electromagnetic or virtual navigation (Fig. 3): *grade of recommendation, 2C*. The biopsy option is particularly advisable when the clinical PM and findings on imaging tests are discordant, when etiologies requiring specific medical treatment (e.g., tuberculosis) are suspected or if the patient is adverse to surgery²: *grade of recommendation, 2C*.

Repeating biopsy or aspiration techniques in case of initial negativity is only recommended when the PM of the SPN is high and diagnosis prior to surgery is considered necessary, or when surgery is contraindicated.

If the result is negative, PET-CT would be recommended (Fig. 3): *grade of recommendation, 1B*. If no PET-CT is available, the alternative would be monitoring with CT, particularly if the FNAB was negative, or surgery.

High Probability of Malignancy (3, 3)

PM is high in patients over 50 years of age, with a history of smoking or radiological features of malignancy: SPN>15 mm, speculated margins or heterogeneous density. SPNs that are hyper-metabolic on PET-CT, those that have increased in size or changed shape and those with a cytology or lung biopsy suggestive of malignancy are also of high PM.^{2,28–32,34}

In these cases, some authors recommend direct diagnostic-therapeutic surgery and others prefer biopsy techniques.^{2,31} In the population selected by this algorithm, when patients with other cancers have been excluded, most SPNs are lung cancers. Thus, the recommendation is that they are managed as such,² with PET-CT being recommended as a method for staging^{17,18}: *grade of recommendation, 2C*.

Pre-surgery histological diagnosis can be determined using FB-TBA, a technique that also allows an evaluation of the bronchial tree before undertaking surgery, or by FNAB. A negative result does not sufficiently reduce the PM to preclude resection of the SPN. The efficacy of attempting pre-surgical diagnosis of SPN with high PM, at clinical stage I or II with CT and PET-CT, provided the patient is operable, has not been investigated. For this reason, this is offered as an option in the algorithm (Fig. 2), although pre-surgical evaluation with FB is a standard practice: *grade of recommendation, 2C*.

If PET-CT reveals mediastinal or extrathoracic uptakes suggestive of metastasis, these should be evaluated before resection surgery.^{17,18} If the SPN with high PM is negative on PET-CT, the PM is not sufficiently reduced to recommend observation,² and resection via video-assisted thoracoscopy is recommended: *grade of recommendation, 2C*. Lower uptake, however, suggests a better prognosis

and less probability of dissemination, something that can be taken into account if the patient has a strong objection to surgery.^{3,31}

In the proposed strategy, the evaluation of an SPN with high PM should conclude with a specific diagnosis or diagnostic-therapeutic resection (Figs. 2 and 3).

Solitary Pulmonary Nodule <8 mm (4)

The prevalence of these SPNs is very high in CT studies, and PM is low, unless there is a history of previous or concomitant metastasizing tumor.^{2,6} They are difficult to access for obtaining biopsies and PET-CT and dynamic CT have very low sensitivity.^{2,6} An observation strategy following the recommendations of the Fleischner Society⁶ (Fig. 1) is proposed, taking into consideration asymptomatic patients without concomitant malignant disease: *grade of recommendation, 2C*.

Follow-up is performed with low-dose, non-contrast CT⁶: *grade of recommendation, 1C*. Again, the patient must be informed and his/her preferences must be taken into consideration.²

Subsolid Pulmonary Nodule (5)

These are ground-glass nodules, pure or with a solid component⁵ (Fig. 4). Determination of a subsolid nodule requires thin sections, preferably of 1 mm, since small solid SPNs in 5-mm CT slices may appear as ground glass.^{2,5}

SSNs are difficult to access for biopsy or aspiration and the sensitivity of PET-CT is low.^{5,35} On the other hand, their PM is relatively high, 15% or more in the case of ground-glass SPN and over 50% for a mixed nodule.⁵ It is also more difficult to establish changes in size or volume of these lesions during surveillance, and malignancies that appear in this form may be indolent for an extended period, for which reason the period of observation must be longer,⁵ i.e., at least 3 years.

As many benign etiologies are acute or subacute processes, an initial observation strategy with CT at 3 months is proposed, since some SPNs can disappear. If they persist, the strategy will be determined by the size of the SPN, if they have a solid component and if they are single or multiple (Fig. 1). Table 2 lists in detail the recommendations as proposed by the Fleischner Society.⁵

Final Possibilities After Evaluation

- A. *Diagnosis of benignancy*: Patients with a specific diagnosis on CT, such as hamartomas, arteriovenous malformations, cystic lesions, rounded atelectasis, mycetomas, pseudonodules or calcified nodules, or who have criteria for benignancy, e.g., documented stability for at least 2 years, in the case of solid nodules, or at least 3 years for subsolid nodules^{2,3}: *grade of recommendation, 2C*.
- B. *Radiological observation*: Indicated in SPNs with low PM, or with intermediate PM when PET-CT is negative, *grade of recommendation, 2C*. This may also be indicated in undiagnosed SPNs if the risk of surgery is very high or if the patient refuses surgery: *grade of recommendation, 2C*.
For SPN>8 mm with low PM, CT monitoring is recommended at 3–6 months, again at 9–12 months and again at 24 months.² There are specific strategies for SPN≤8 mm and SSN^{2,5,6} (Fig. 1 and Table 2): *grade of recommendation, 2C*. Surveillance CTs must be performed with low-dose and non-contrast: *grade of recommendation, 1C*.
- C. *Diagnostic-therapeutic surgery*: Operable patients with undiagnosed SPN and PM greater than low should be offered resection: *grade of recommendation, 2C*. Although video-assisted thoracoscopy is the method of choice (*grade of recommendation, 1C*),

Table 2
Management of Subsolid Nodules.

			Grade of Recommendation ^a
<i>Ground-glass SPN</i>			
≤5 mm	No follow-up		1C
>5 mm	CT at 3 months	Persistent	1B
<i>Partially solid SPN (solid part)</i>			
<5 mm	CT at 3 months	Persistent	2C
≥5 mm	CT at 3 months	Persistent	1B
<i>Multiple ground-glass PN</i>			
≤5 mm	Consider non-malignant causes		1C
>5 mm	CT at 3 months	Persistent	1B
<i>Multiple PN with solid component</i>			
	CT 3 months	Persistent	1C

PN: pulmonary nodule; SPN: solitary pulmonary nodule; PET: positron emission tomography; CT: computed tomography. The grade of recommendation is that proposed by the Fleischner Society,⁵ based on the GRADE system. The recommendations of the *American College of Chest Physicians*² reduce the strength of the recommendation by one grade. The CT for evaluation must be fine slice and follow-up low-dose CT.

^a Grade of recommendation by strength (strong 1, or weak 2) and quality of scientific evidence as high (A), moderate (B), low (C) or very low (D), according to the GRADE system.

each surgical team will decide on the best approach. Intra-operative biopsy is recommended for completing appropriate resection in the case of LC: *grade of recommendation, 1C*.

D. Specific diagnosis: This is the etiological diagnosis of SPN. If LC is diagnosed, specific local staging and treatment protocols will be applied.²⁰

The algorithm cannot be completed without re-emphasizing that the optimal decision must include the opinion and the preferences of the appropriately informed patient²: *grade of recommendation, 1C*.

Conflict of Interests

The authors state that they have no conflict of interests.

Appendix 1. Supplementary data

Supplementary material related to this article can be found, in the online version, at <http://dx.doi.org/10.1016/j.arbr.2014.05.007>.

References

- Ost DE, Gould MK. Decision making in patients with pulmonary nodules. *Am J Respir Crit Care Med*. 2012;185:363–72.
- Gould MK, Donington J, Lynch WR, Mazzone PJ, Midthun DE, Naidich DP, et al. Evaluation of individuals with pulmonary nodules: when is it lung cancer? Diagnosis and management of lung cancer, 3rd ed: American College of Chest Physicians evidence-based clinical practice guidelines. *Chest*. 2013;143:e93S–120S.
- Patel VK, Naik SK, Naidich DP, Travis WD, Weingarten JA, Lazzaro R, et al. A practical algorithmic approach to the diagnosis and management of solitary pulmonary nodules. Part 1: Radiologic characteristics and imaging modalities. *Chest*. 2013;143:825–39.
- Schunemann HJ, Jaeschke R, Cook DJ, Bria WF, El-Solh AA, Ernst A, et al. An official ATS statement: grading the quality of evidence and strength of recommendations in ATS guidelines and recommendations. *Am J Respir Crit Care Med*. 2006;174:605–14.
- Naidich DP, Bankier AA, MacMahon H, Schaefer-Prokop CM, Pistolesi M, Goo JM, et al. Recommendations for the management of subsolid pulmonary nodules detected at CT: a statement from the Fleischner Society. *Radiology*. 2013;266:304–17.
- MacMahon H, Austin JH, Gamsu G, Herold CJ, Jett JR, Naidich DP, et al. Guidelines for management of small pulmonary nodules detected on CT scans: a statement from the Fleischner Society. *Radiology*. 2005;237:395–400.
- McWilliams A, Tammemagi MC, Mayo JR, Roberts H, Liu G, Soghrati K, et al. Probability of cancer in pulmonary nodules detected on first screening CT. *N Engl J Med*. 2013;369:910–9.
- Ost D, Fein AM, Feinsilver SH. Clinical practice. The solitary pulmonary nodule. *New Engl J Med*. 2003;348:2535–42.
- Cummings SR, Lillington GA, Richard RJ. Estimating the probability of malignancy in solitary pulmonary nodules. A Bayesian approach. *Am Rev Respir Dis*. 1986;134:449–52.
- Mery CM, Pappas AN, Bueno R, Mentzer SJ, Lukanich JM, Sugarbaker DJ, et al. Relationship between a history of antecedent cancer and the probability of malignancy for a solitary pulmonary nodule. *Chest*. 2004;125:2175–81.
- Austin JH, Garg K, Aberle D, Yankelevitz D, Kuriyama K, Lee HJ, et al. Radiologic implications of the 2011 classification of adenocarcinoma of the lung. *Radiology*. 2013;266:62–71.
- Travis WD, Brambilla E, Noguchi M, Nicholson AG, Geisinger KR, Yatabe Y, et al. International Association for the Study of Lung Cancer/American Thoracic Society/European Respiratory Society International Multidisciplinary Classification of Lung Adenocarcinoma. *J Thorac Oncol*. 2011;6:244–85.
- Swensen SJ, Viggiano RW, Midthun DE, Muller NL, Sherrick A, Yamashita K, et al. Lung nodule enhancement at CT: multicenter study. *Radiology*. 2000;214:73–80.
- Pozo Rodríguez F, Álvarez-Martínez C, Melero-Moreno C, Pozo-García MA, Martín-Roncero W, Martín-García I. Revisión sistemática de la eficacia diagnóstica de la tomografía por emisión de positrones en el nódulo pulmonar solitario. *MBE Neumol*. 2004. Available from: <http://mbeneumologia.org/mbe/actividadCientifica/shtml/pdf/rs.pdf> [accessed 03.03.14].
- Gould MK, Maclean CC, Kuschner WG, Rydzak CE, Owens DK. Accuracy of positron emission tomography for diagnosis of pulmonary nodules and mass lesions: a meta-analysis. *J Am Med Assoc*. 2001;285:914–24.
- Deppen S, Putnam Jr JB, Andrade G, Speroff T, Nesbitt JC, Lambright ES, et al. Accuracy of FDG-PET to diagnose lung cancer in a region of endemic granulomatous disease. *Ann Thorac Surg*. 2011;92:428–32 [Discusión 33].
- Silvestri GA, Gonzalez AV, Jantz MA, Margolis ML, Gould MK, Tanoue LT, et al. Methods for staging non-small cell lung cancer: diagnosis and management of lung cancer, 3rd ed: American College of Chest Physicians evidence-based clinical practice guidelines. *Chest*. 2013;143:e211S–50S.
- Lim E, Baldwin D, Beckles M, Duffy J, Entwisle J, Faviere-Finn C, et al. Guidelines on the radical management of patients with lung cancer. *Thorax*. 2010;65 Suppl. 3:iii1–27.
- MacManus M, Nestle U, Rosenzweig KE, Carrio I, Messa C, Belohlavek O, et al. Use of PET and PET/CT for radiation therapy planning: IAEA expert report 2006–2007. *Radiother Oncol*. 2009;91:85–94.
- Sanchez de Cos J, Hernandez JH, Jimenez MF, Sanchez SP, Gratacos AR, Porta RR. SEPAR guidelines for lung cancer staging. *Arch Bronconeumol*. 2011;47:454–65.
- Lacasse Y, Wong E, Guyatt GH, Cook DJ. Transthoracic needle aspiration biopsy for the diagnosis of localised pulmonary lesions: a meta-analysis. *Thorax*. 1999;54:884–93.
- Ng YL, Patsios D, Roberts H, Walsham A, Paul NS, Chung T, et al. CT-guided percutaneous fine-needle aspiration biopsy of pulmonary nodules measuring 10 mm or less. *Clin Radiol*. 2008;63:272–7.
- Wiener RS, Schwartz LM, Woloshin S, Welch HG. Population-based risk for complications after transthoracic needle lung biopsy of a pulmonary nodule: an analysis of discharge records. *Ann Intern Med*. 2011;155:137–44.
- Botana-Rial M, Núñez-Delgado M, Pallarés-Sanmartín A, Leiro-Fernández V, Torres-Durán M, Represas-Represas C, et al. Multivariate study of predictive factors for clearly defined lung lesions without visible endobronchial lesions in transbronchial biopsy. *Surg Endosc*. 2010;24:3031–6.
- Schwarz C, Schonfeld N, Bittner RC, Mairinger T, Russmann H, Bauer TT, et al. Value of flexible bronchoscopy in the pre-operative work-up of solitary pulmonary nodules. *Eur Respir J*. 2013;41:177–82.

26. Wang Memoli JS, Nietert PJ, Silvestri GA. Meta-analysis of guided bronchoscopy for the evaluation of the pulmonary nodule. *Chest*. 2012;142:385–93.
27. Falcoz PE, Brunelli A, Dahan M, Decaluwe HM, Raemdonck D, Rocco G, et al. Database report silver book 2013. European Society of Thoracic Surgeon. 2013 accessed 03.03.14]. Available from: http://www.ests.org/_userfiles/pages/files/database%202013.pdf
28. Swensen SJ, Silverstein MD, Ilstrup DM, Schleck CD, Edell ES. The probability of malignancy in solitary pulmonary nodules. Application to small radiologically indeterminate nodules. *Arch Intern Med*. 1997;157:849–55.
29. Gould MK, Ananth L, Barnett PG. A clinical model to estimate the pretest probability of lung cancer in patients with solitary pulmonary nodules. *Chest*. 2007;131:383–8.
30. Álvarez-Martínez CJ. Determinación de un modelo predictivo de la probabilidad de malignidad en el nódulo pulmonar solitario y verificación de la bondad predictiva del modelo. Madrid: Universidad Complutense; 2000.
31. Patel VK, Naik SK, Naidich DP, Travis WD, Weingarten JA, Lazzaro R, et al. A practical algorithmic approach to the diagnosis and management of solitary pulmonary nodules. Part 2: Pretest probability and algorithm. *Chest*. 2013;143:840–6.
32. Herder GJ, van Tinteren H, Golding RP, Kostense PJ, Comans EF, Smit EF, et al. Clinical prediction model to characterize pulmonary nodules: validation and added value of 18F-fluorodeoxyglucose positron emission tomography. *Chest*. 2005;128:2490–6.
33. Wingard JR, Hiemenz JW, How Jantz MA. I manage pulmonary nodular lesions and nodular infiltrates in patients with hematologic malignancies or undergoing hematopoietic cell transplantation. *Blood*. 2012;120:1791–800.
34. Schultz EM, Sanders GD, Trotter PR, Patz Jr EF, Silvestri GA, Owens DK, et al. Validation of two models to estimate the probability of malignancy in patients with solitary pulmonary nodules. *Thorax*. 2008;63:335–41.
35. Chun EJ, Lee HJ, Kang WJ, Kim KG, Goo JM, Park CM, et al. Differentiation between malignancy and inflammation in pulmonary ground-glass nodules: the feasibility of integrated (18)F-FDG PET/CT. *Lung Cancer*. 2009;65:180–6.