



Original Article

Physiotherapy Intervention for Preventing the Respiratory Muscle Deterioration in Institutionalized Older Women With Functional Impairment[☆]

Maria dels Àngels Cebrià i Iranzo,^{a,*} David Alan Arnall,^b Celedonia Igual Camacho,^a José Manuel Tomás,^c Juan Carlos Meléndez^d

^a Departamento de Fisioterapia, Universidad de Valencia, Valencia, Spain

^b Departamento de Fisioterapia, East Tennessee State University, TN, United States

^c Departamento de Metodología de las Ciencias del Comportamiento, Universidad de Valencia, Valencia, Spain

^d Departamento de Psicología Evolutiva y de la Educación, Universidad de Valencia, Valencia, Spain

ARTICLE INFO

Article history:

Received 27 April 2012

Accepted 31 July 2012

Available online 8 December 2012

Keywords:

Elderly

Functional impairment

Institutionalization

Muscle weakness

Respiratory muscle training

Women

ABSTRACT

Introduction: In elderly seniors (>80 years), respiratory function may be compromised when, in addition to the presence of comorbidity and loss of mobility, there is also reduced respiratory muscle (RM) strength. The literature has shown that RM training could be an effective method to improve RM function and prevent clinical deterioration, particularly in population with RM weakness.

The main purpose of this paper was to assess the effectiveness of RM training on the respiratory muscle strength and endurance of institutionalized elderly women with functional impairment.

Method: Fifty-four residents (mean=85 years, SD=6.7) were randomly assigned to either a control (n=27) or training (n=27) group. A supervised training program was developed with Threshold[®] IMT, five times per week for 6-weeks. The main variables of the intervention were: maximum inspiratory pressure (PI_{max}), maximum expiratory pressure (PE_{max}) and maximal voluntary ventilation (MVV), all of which were measured at weeks 0, 4, 7 and 10.

Results: Statistical analysis revealed no significant differences in PI_{max} ($F_{3,114}=1.04$, $P=.368$, $R^2=0.027$), PE_{max} ($F_{3,114}=1.86$, $P=.14$, $R^2=0.047$) and MVV ($F_{3,114}=1.74$, $P=.162$, $R^2=0.044$) between the two groups after the intervention. However, the workload significantly improved with the training sessions ($F_{5,100}=72.031$, $P<.001$, $R^2=0.791$).

Conclusion: In a 6-week interval-based training program, the threshold loading device does not significantly improve parameters related to RM strength and endurance of the study population.

© 2012 SEPAR. Published by Elsevier España, S.L. All rights reserved.

Intervención fisioterápica preventiva del deterioro de la musculatura respiratoria en ancianas institucionalizadas con limitación funcional

RESUMEN

Introducción: En el anciano de edad avanzada (>80 años) la función respiratoria puede verse afectada cuando a la presencia de comorbilidad y la pérdida de movilidad se suma el descenso de la fuerza de la musculatura respiratoria (MR). La literatura médica ha mostrado que el entrenamiento de la MR puede ser una intervención efectiva para mejorar la funcionalidad y prevenir el deterioro clínico, especialmente en la población con debilidad de la MR.

El objetivo del estudio fue evaluar la efectividad del entrenamiento de la MR en la fuerza y resistencia de esta musculatura, en ancianas institucionalizadas con limitación funcional.

Palabras clave:

Anciano

Limitación funcional

Debilidad muscular

Entrenamiento musculatura respiratorio

Institucionalización

Mujeres

[☆] Please cite this article as: Cebrià i Iranzo MÀ, et al. Intervención fisioterápica preventiva del deterioro de la musculatura respiratoria en ancianas institucionalizadas con limitación funcional. Arch Bronconeumol. 2012;49:1-9.

* Corresponding author.

E-mail address: angeles.cebria@uv.es (M.À. Cebrià i Iranzo).

Método: Se asignaron aleatoriamente 54 residentes con limitación para deambular (media 85 años, DE 6,7) a un grupo control (n = 27) y entrenado (n = 27). Se desarrolló un programa de entrenamiento supervisado, mediante Threshold® IMT, 5 días por semana durante 6 semanas. Las variables principales fueron: la presión inspiratoria máxima (PI_{máx}), la presión espiratoria máxima (PE_{máx}) y la ventilación voluntaria máxima (MVV), medidas en las semanas 0, 4, 7 y 10.

Resultados: Los análisis estadísticos no revelaron cambio en la PI_{máx} ($F_{3,114} = 1,04$, $p = 0,368$, $R^2 = 0,027$), PE_{máx} ($F_{3,114} = 1,86$, $p = 0,14$, $R^2 = 0,047$) y MVV ($F_{3,114} = 1,74$, $p = 0,162$, $R^2 = 0,044$) entre ambos grupos tras la intervención. No obstante, la carga de trabajo mejoró significativamente con el entrenamiento ($F_{5,100} = 72,031$, $p < 0,001$, $R^2 = 0,791$).

Conclusión: El dispositivo de entrenamiento umbral en un programa interválico de 6 semanas no produce una mejora significativa de los parámetros relacionados con la fuerza y la resistencia de la MR, en la población estudiada.

© 2012 SEPAR. Publicado por Elsevier España, S.L. Todos los derechos reservados.

Introduction

One of the most important physiological changes in respiratory function that accompanies aging is the decline in respiratory muscle (RM) strength, associated with the overall loss of muscle mass or sarcopenia. In elderly seniors (>80 years), sarcopenia, as well as the presence of other diseases (comorbidities) can cause physical disability, functional deterioration¹ and affect respiratory function, making it more vulnerable against disease.² RM strength and resistance are related with the ability to move around freely and perform activities of daily living (ADL).^{3,4} Therefore, RM strength is an important physiological variable that helps prevent functional decline in the elderly⁵ and can reduce the risk for morbidity and mortality.²

Previous studies show that aerobic exercise in general is accompanied by physiological benefits, including increased RM strength and resistance.^{3,6,7} In addition, it seems that these benefits are greater when they are combined with specific RM training.^{6,7} Some elderly patients are not able to do aerobic exercise in general, and in that case specific RM training can be considered as an alternative to avoid deterioration in the most vulnerable elderly population. Recent studies emphasize the need for RM training in the elderly population with difficulty for performing overall aerobic exercise (walking, for example)^{5,8} and in general in the population with RM weakness,⁹ which are characteristics that define the population that is the object of this study.

As for the modalities for RM training, ventilation with threshold load (for example, Threshold® Inspiratory-Muscle Trainer) has been revealed to be a simple, effective method for increasing inspiratory muscle resistance and strength, regardless of the ventilatory pattern.^{10,11} Gosselink highlights as an additional advantage the fact that ventilation with threshold loading shortens inspiratory time and increases exhalation and relaxation time,¹² which may avoid the appearance of inspiratory muscle fatigue. Several studies have demonstrated the effectiveness of Threshold® IMT, both in healthy populations as well as in those who present respiratory, cardiovascular and neuromuscular diseases. However, few studies have evaluated this type of training in elderly populations,^{8,13–15} and none have been done in elderly subjects with limited movement. According to Harms,¹⁶ elderly women present poorer lung function values and, therefore, greater limitation for physical activity than elderly men. In addition, women have a longer life expectancy, and consequently greater functional limitation in old age.

The objective of this study was to evaluate the effectiveness of a specific IMT program about RM strength and resistance in institutionalized elderly women with functional limitation. The general hypothesis was that the Threshold® IT equipment improves RM strength and resistance in this population.

Subjects and Methods

The study is a randomized, controlled assay, approved by the Ethics Committee for Human Research at the University of Valencia (clinical assay no. H1325072291220). All the procedures used for measuring and respiratory training have respected the ethical principles included in the Helsinki Declaration, and informed consent was obtained.

We selected 54 elderly institutionalized women (mean age 85, SD 6.7) from nursing homes located in the city of Valencia (Spain). The inclusion criteria were: (a) inability to walk more than 10 m or use of wheel chair; (b) Mini Cognitive Test by Lobo score ≥ 20 points (participants without moderate or severe cognitive deterioration); and (c) medical stability, determined by the healthcare personnel at each center. A questionnaire was completed about the medical history of the residents in order to identify any conditions that could exclude them, such as: (a) chronic cardiorespiratory problems; (b) acute cardiorespiratory episode (in the 2 previous months); (c) neurological, muscular or neuromuscular problems that could interfere with performing assessment tests and/or physical training; (d) active smokers or ex-smokers (<5 years); and (e) terminal patients. Throughout the 3 months of 2009, which was the time period of the study, 14 residents were lost to the study for different reasons, resulting in a total of 40 participants (Fig. 1).

Measurements

Both groups, the control group (CG) and the training group (TG), were measured at 4 different moments: baseline (time 0); midway through the training program (week 4); end of training program (week 7); and follow-up (week 10). The main variables were: maximum inspiratory pressure (PI_{máx}), maximum expiratory pressure (PE_{máx}) and maximum voluntary ventilation (MVV).

Spirometry

Lung function was assessed with a portable spirometer by Jaeger (VIASYS® Healthcare GmbH, Höchberg, Germany). The tests were simple spirometry (volume-time) and forced spirometry (flow-volume curve), which provided data for the following variables: vital capacity (VC), forced vital capacity (FVC), forced expiratory volume in one second (FEV₁), peak inspiratory flow (PIF), and peak expiratory flow (PEF). For both tests, we followed the standards required by the *American Thoracic Society* and the *European Respiratory Society* (ATS/ERS).¹⁷ In the case of forced spirometry, this was repeated until it obtained a minimum of 3 technically satisfactory maneuvers, with a minute of rest in between, and the highest and most reproducible value was recorded, as long as the difference of the 2 highest values, FEV₁ and FVC, were not >0.150 l (ATS/ERS, 2005: p. 325).¹⁷

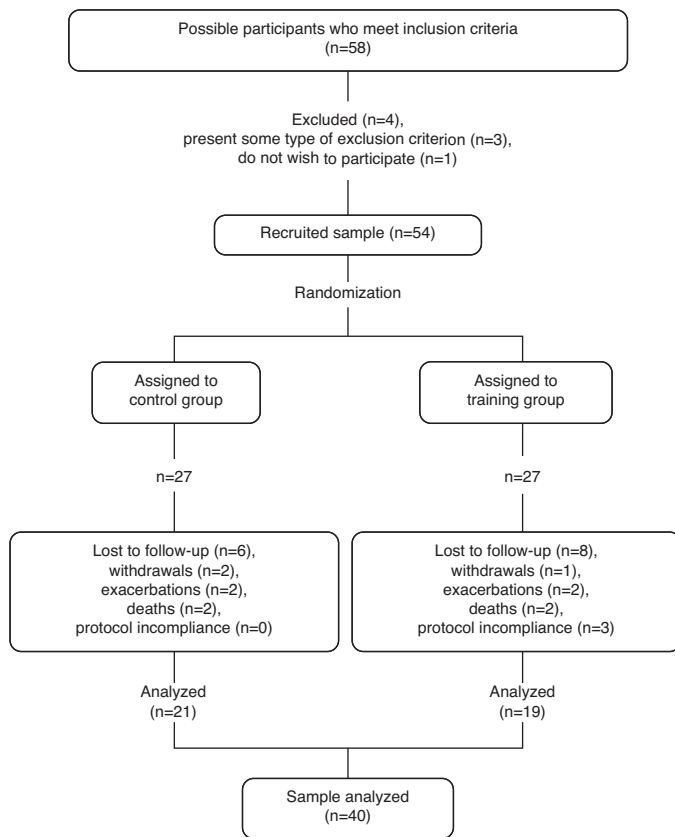


Fig. 1. Flowchart of the participants.

Respiratory Muscle Strength

PI_{\max} and PE_{\max} were measured with an aneroid manometer (Series 2000 Magnehelic® Pressure Gauge, Dwyer Instruments, Michigan City, Indiana, United States) with a sensitivity range between 0 and 300 cm H₂O of pressure. The measurements were repeated until 3 readings were obtained with a variance $\leq 10\%$,^{18,19} and the highest value was used. The reference values used to obtain the percentages were those chosen by Enright et al.,¹⁹ taking into account the following circumstances: (a) the values for normalcy included the population ≥ 85 , with a sample size higher than that of other studies ($n=193$), and excluded the institutionalized population and/or those who were unable to walk; and (b) the present study reproduces the methodology developed by these authors, following the indications of Black and Hyatt.²⁰

Respiratory Muscle Resistance

MVV (maximum volume of air that a person breathes voluntarily during an interval of 12 s) was measured a minimum of 2 times with a variation $\leq 20\%$.^{17,21} MVV diminished progressively with weak and fatigable RM. In accordance with the ATS/ERS, MVV is an index that is representative of overall RM resistance: "The most important advantage to measuring MVV as an indicator of respiratory muscle endurance is its close resemblance to the task performed during exercise." (ATS/ERS, 2002, p. 563).¹⁸ The reference values used to obtain the percentages were those published by Neder et al.²¹ All spirometry measurements, as well as PI_{\max} , PE_{\max} and MVV, were done by specialized personnel, and with the participants sitting and wearing nasal clips.^{17,18}

Ad hoc Questionnaire

The research team and several experts (physicians specialized in geriatrics and pulmonology, physiotherapists and psychologists)

elaborated a questionnaire (Appendix A) that allowed us to know: (a) the presence of dyspnea and functional limitation for ADL; (b) the experience during the training sessions; and (c) observations about the training protocol. The members of the research team that carried out the survey were not involved in the development of the training protocol. During the initial assessment, both groups responded to questions 1–4. Later, in the post-training assessment (week 7), only the TG answered questions 5–15. It is an *ad hoc* questionnaire created for the purpose of this study alone, with descriptive purpose and content validity, because the Spanish versions of the validated scales did not adjust to the characteristics of the population studied.

Inspiratory Muscle Training Program

The RM training program was carried out with the Threshold® IT device (Respironics Health Scan Inc., Cedar Grove, NJ, United States). It is a device that is able to work against a threshold load that is adjustable between 7 and 41 cm H₂O of negative pressure. Physiotherapists who were not involved in the measurements supervised the 5 weekly sessions for 6 consecutive weeks. The interval of the training program consisted of 7 alternating cycles of 2 min of work and 1 min of rest.²² The initial days of the first week of training were dedicated to the familiarization of the participants with the training process, and low workloads of 7–10 cm H₂O were used. Afterwards, the workload was increased, taking into consideration the tolerance to exertion of each participant, while inspiring against a load of between 30% and 50% of the baseline values of PI_{\max} , during the first 3 weeks of training. In order to ensure that each participant was subjected to the appropriate workload, the intermediate measurement of PI_{\max} allowed us to calculate the load at which each subject should train the 3 remaining weeks. Thus, the load was readjusted between 30% and 50% of intermediate PI_{\max} , and it was adequately increased between weeks 4 and 6. Throughout the 6 weeks of training, all patients were controlled for percentage of oxygen saturation (SaO₂) and heart rate (beats/min), at least once a week during the interval program. Data were collected daily for inspiratory workload (cm H₂O), subjective perception of exertion (Borg CR10 scale)²³ and compliance with the session, and the reasons for any absences were recorded. The CG did not train, but were merely measured at the same time intervals (weeks 0, 4, 7, and 10).

Statistical Analysis

The statistical data analysis was done with the SPSS version 20 computer program. The descriptive statistics were calculated for all the variables, means, standard deviations and percentages. We used the statistical and graphic techniques recommended in the medical literature to evaluate assumptions (normalcy, homoscedasticity, etc.) as well as atypical values. In order to calculate the sample size, *a priori*, from a statistical standpoint, it is necessary to have a size for the estimated reasonable effect. In this case, there were no studies with conditions that were even similar to the population being studied in this randomized clinical assay. Therefore, it was not possible to make a reliable statistical estimation. We then turned to the medical literature to assess the typical sample size at which significant effects begin to be shown with the technique. Based on those studies,^{6,7,10,11,14} we opted for a larger sample size that therefore had greater statistical power than the studies for the same effect size. Additionally, inferential techniques were used (*t* and chi-squared tests) to compare both groups at baseline, as well as mixed ANOVA 2 (group) × 4 (time) to analyze the effects of the intervention with threshold *versus* control. Mixed ANOVA is the recommended statistical method for assessing the evolution of groups (trained and control) at several moments

Table 1
Baseline Characteristics of the Participants From Both Groups Studied: Percentages or Means±1 Standard Deviation.

Variable	Control Group (n=21)	Training Group (n=19)	P
<i>Anthropometric data</i>			
Age, years	86.2±5.0	84.6±7.7	.421
Height, cm	147.3±5.3	153.6±6.4	.002
Weight, kg	63.5±11.6	66.6±15.3	.478
BMI, kg/m ²	29.3±5.1	28.2±5.8	.507
<i>Diagnosed diseases</i>			
Respiratory, % yes	28.6	36.8	.577
Cardiovascular, % yes	76.2	57.9	.217
Endocrine, % yes	39.0	42.1	.796
Neurological, % yes	28.6	36.8	.577
Muscular-skeletal, % yes	76.2	63.2	.369
Other, % yes	76.2	84.2	.527
Comorbidity, n	3.24±1.0	3.21±1.1	.935 ^a
<i>Pulmonary function</i>			
VC, l	1.50±0.33	1.67±0.46	.075
VC, % pred.	77.7±18.5	83.0±21.3	.450
FVC, l	1.36±0.34	1.54±0.42	.138
FVC, % pred.	72.9±20.6	76.1±20.0	.656
FEV ₁ , l	1.11±0.33	1.19±0.38	.456
FEV ₁ , % pred.	81.8±26.6	80.0±25.7	.848
FEV ₁ /FVC, %	80.6±10.8	77.1±12.2	.347
PEF, l/s	2.58±1.0	2.75±1.12	.618
PIF, l/s	1.78±0.54	1.64±0.48	.404
<i>Respiratory muscle function</i>			
PE _{max} , cm H ₂ O	48.6±18.2	54.5±23.0	.372
PE _{max} , % pred. ^b	53.7±21.1	58.3±26.8	.549
PI _{max} , cm H ₂ O	-28.1±13.8	-29.5±11.4	.734
PI _{max} , % pred. ^b	66.4±30.4	67.9±26.2	.873
MVV, l/min	28.9±13.2	31.1±10.7	.574
MVV, % pred. ^c	33.5±9.9	40.1±14.5	.604

FEV₁, forced expiratory volume in one second; FVC, forced vital capacity; BMI, body mass index; MVV, maximum voluntary ventilation; PEF, peak expiratory flow; PE_{max}, maximum expiratory pressure; PIF, peak inspiratory flow; PI_{max}, maximum inspiratory pressure; % pred., percentages of reference values; VC, vital capacity. The section “diagnosed diseases (DD)” shows the percentages of DD presence and the mean number of DD (comorbidity).

^a In addition, a non-parametric Mann–Whitney test was used to compare comorbidity between groups.

^b Percentage according to the reference values by Enright et al.¹⁹

^c Percentage according to the reference values of Neder et al.²¹; as for these reference values for MVV, it should be kept in mind that only 15% of the sample was analyzed (<80 years; for those with reference values). The Student's *t* and chi-squared tests were used to obtain the differences between the two groups.

in time. *Post hoc* tests were calculated for statistically significant differences with the Bonferroni correction, as well as estimations of the magnitude of the effect with the determination coefficient.

Results

Descriptive Variables

Baseline Characteristics

Table 1 shows the baseline characteristics and the homogeneity tests between groups. As for the anthropometric data, the results only show that the groups differ in height.

No statistically significant differences were observed in the variables regarding inclusion criteria: the Lobo Mini Cognitive Test (23.0±3.5) and Barthel index (68.1±22.7). On an average, the participants had been institutionalized 4.1±5.2 years and only 12.5% were ex-smokers (CG, n=1; TG, n=4; *P*=.120).

As for questions 1–4 (Appendix A, block A) of the *ad hoc* questionnaire, there were no significant differences between the 2 groups (*P*>.05). In 37.5% of the cases, breathing affected in some measure (“a little” or “a lot”) the normal development of activities of daily living (ADL). Among these, walking and/or transference

Table 2
Subjective Perception of Exertion for the Participants of the Training Group: Mean±1 Standard Deviation.

Borg scale CR10	Training Group (n=19)
Week 1 (max. 10)	3.45±1.18
Week 2 (max. 10)	3.32±0.79
Week 3 (max. 10)	3.18±1.06
Week 4 (max. 10)	3.57±3.14
Week 5 (max. 10)	3.10±0.98
Week 6 (max. 10)	3.00±0.86
Week 1–6 (max. 10)	3.17±0.86

were mostly associated with the presence of dyspnea (47.5%), followed by self-care activities (27.5%). The main causes that impede walking were: amputation of a lower limb or limbs, the effects of a cerebrovascular accident, osteoarthritis and a history of fractures caused by falls.

Assessment of the Training Protocol

The descriptive analysis corresponding with questions 5–9 (Appendix A, block B) of the *ad hoc* questionnaire for the TG shows that close to 42.7% of the participants reported difficulty in breathing during the session, especially for the first few days (47.4%) and when the workload was increased (15.8%). They also considered the 1-min rest intervals (84.2%) necessary. After the conclusion of the training protocol (questions 10–15, Appendix A, block C), 63% of the participants perceived an improvement over their previous state, and 57.9% considered it necessary to make some type of change in the protocol (for example, 47.4% period of one year; 21.1%, weekly sessions; 22%, total number of weeks). As for the number of colds, there were no significant differences (CG 33.3% and TG 52.6%; *P*=.218). 84.2% of the people with training answered that they would participate again, while 5.3% did not know what to answer. In addition, they scored an average perceived satisfaction of 8.4±2.1 on a scale from 1 (“not at all satisfied”) to 10 (“very satisfied”). Finally, the subjective perception of exertion (Borg CR10 scale)²³ for the TG showed no significant differences between the weekly averages (Table 2), and a score of 3 was “moderate” exertion.

Effects of the Training Protocol

Inspiratory Muscle Strength

The estimated ANOVA evaluating the effect of the intervention on the absolute PI_{max} values did not find statistically significant differences among the groups (*F*_{1,38}=0.22, *P*=.637; *R*²=0.006). Time did show differences and in both groups there was an increase over time (*F*_{3,114}=12.51, *P*<.001, *R*²=0.248). However, the interaction effect, which shows if the treatment is effective, was not statistically significant (*F*_{3,114}=1.04, *P*=.368; *R*²=0.027) (Fig. 2). Although

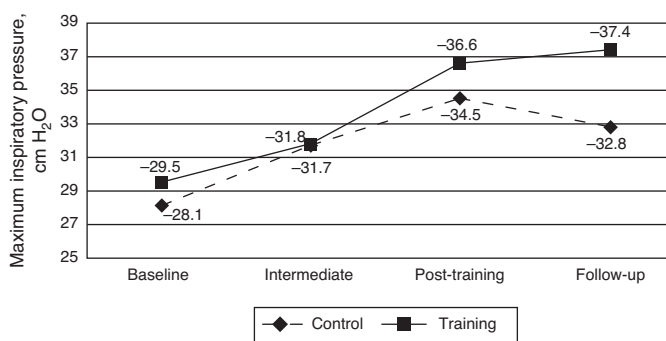


Fig. 2. Mean maximum inspiratory pressure (PI_{max}, cm H₂O) for the control and training groups over the course of the 4 time periods measured: baseline, intermediate, post-training and follow-up.

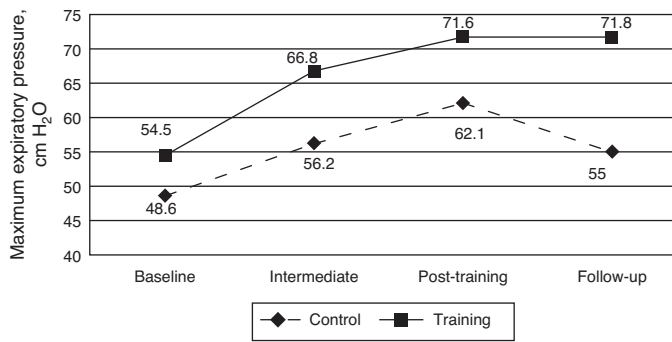


Fig. 3. Mean of maximum expiratory pressure (PE_{max}, cm H₂O) for the control and training groups over the course of the four time periods measured: baseline, intermediate, post-training and follow-up.

the interaction was not statistically significant, simple effects analyses of the interaction were used to better understand within each group what moments in time differed. The CG showed differences between the baseline and the final measurement (time period 3 or post-training, $P < .05$). Contrarily, the TG presented differences at all time periods with baseline ($P < .05$). There were no differences between time periods 3 and 4 (follow-up) ($P > .05$). This result indicates that the change over time in the TG was more stable, as CG is lower in the follow-up, which does not happen in the TG.

Expiratory Muscle Strength

The estimated ANOVA assessing the effect of the intervention on the absolute PE_{max} values also found no significant differences between the groups ($F_{1,38} = 2.57$, $P = .117$; $R^2 = 0.063$). Time did show significant differences and in both groups there was an increase over time ($F_{3,114} = 15.55$, $P < .001$, $R^2 = 0.29$). However, the interaction effect was not statistically significant in the case of PE_{max} ($F_{3,114} = 1.86$, $P = .14$; $R^2 = 0.047$) (Fig. 3). Although the interaction was not statistically significant, simple effects were done as in the former variable. In the case of CG, there was only a gain between the baseline and the post-training and, however the follow-up did not differ significantly from baseline ($P > .05$). In the case of TG, baseline differed from all the other time periods ($P > .05$), which indicated a stable change, even in follow-up.

Respiratory Muscle Resistance

A third ANOVA evaluated the effect of the intervention on the absolute MVV values and, once again, did not show significant differences between the groups ($F_{1,38} = 0.47$, $P = .49$; $R^2 = 0.012$). There was a significant increase in MVV over time ($F_{3,114} = 3.39$, $P = .02$; $R^2 = 0.082$), despite the fact that the interaction was not significant ($F_{3,114} = 1.74$, $P = .162$; $R^2 = 0.044$) (Fig. 4). Once again, and although the interaction was not statistically significant, simple effects were done. In the case of CG, there were no differences between any of the time periods ($P > .05$), which indicate stability in the resistance of RM. In the case of TG, the baseline differed only from the follow-up ($P < .05$), which indicates that, if there were potential effects of training with Threshold® IT on muscle resistance, these tended to appear at later time periods.

Threshold® IT: Workload and Subjective Perception of Exertion

The workload that the TG group was subjected to significantly improved both absolute values ($F_{5,100} = 72.031$, $P < .001$; $R^2 = 0.791$) as well as percentage of baseline PI_{max} ($F_{5,100} = 67.225$, $P < .001$; $R^2 = 0.810$). In absolute values, the load increased from -9.7 to -20.7 cm H₂O over the course of the 6-week training period. This increase was considerably less during the first half of the RM training (difference of means between the first and third weeks, 3.39 cm H₂O) than during the second half (difference of means between the

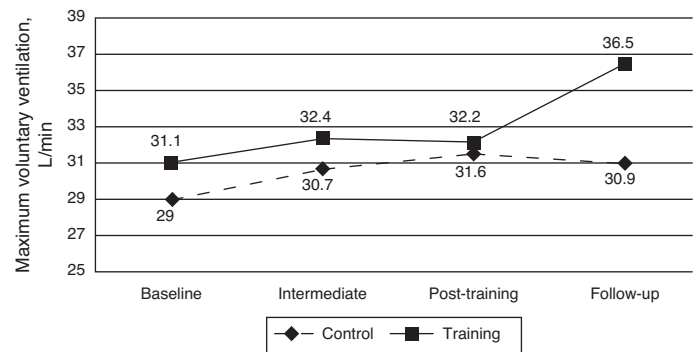


Fig. 4. Means of maximum voluntary ventilation (MVV, l/min) for the control and training groups over the course of the four time periods measured: baseline, intermediate, post-training and follow-up.

fourth and sixth weeks, 5.84 cm H₂O), a result that may be due to the period of familiarization of the first week. Likewise, the relative workload rose from 36% to 78% PI_{max} measured at baseline. The difference of percentages for the first half of the training period was 11%, while for the second half it was 23.3%, an aspect possibly related with familiarization, as previously commented. Last of all, the subjective perception of exertion (Borg scale) did not change ($P > .05$) during the training period (Table 2).

Discussion

In this present study, training with the Threshold® IT device did not reveal a significant improvement in RM strength or resistance between the two groups. These results were unexpected because the majority of previous studies in other populations demonstrate the positive experimental effect of the use of the IT device,¹⁰ especially in patients with RM weakness.⁹ In the elderly population, previous controlled clinical assays show that RM strength and resistance,^{8,13} as well as functional autonomy,¹⁵ improve with specific RM training. Nonetheless, our study differs from the previously mentioned studies in several aspects, making a strict comparison difficult: (a) the mean age of the sample was younger (67–70 vs 85)^{8,13,15}; (b) the specific RM training modality did not include the Threshold® IT device (isocapnic hyperventilation,¹³ Powerlung® inspiratory and expiratory threshold load device⁸), except for the study by Fonseca et al.¹⁵; and (c) the capacity for exercise was normal and/or community lifestyle,^{8,14} except for the institutionalized population in the Fonseca et al. study.¹⁵ In our study, the elderly subjects presented inability to walk and accentuated RM weakness (age range 80–97; PI_{max} baseline -28.8 cm H₂O and PE_{max} baseline 51.4 cm H₂O), particularities that could explain the difference in our results compared with those of Watsford and Murphy⁸ (age range 60–69; PI_{max} baseline between -70 and 80 cm H₂O and PE_{max} between 80 and 90 cm H₂O).

Although there was no statistical significance between the groups for the main variables, there was an observed increase of 30% in the PI_{max} for the TG between the start and end of the intervention. Although there was also an observed gain in PI_{max} (18%) in the CG, this was substantially lower when we analyze the progression of the PI_{max} values between the start and the end of the intervention, which indicates that the improvement observed in the CG was not due to physiological factors, since this group had not been training. In line with these results, O’Kroy and Coast²⁴ found a significant increase in PI_{max} in the CG. Hill et al.²² also found an increase of 8% in PI_{max} in the CG, although this increase was lower than that found in the TG (29%), in spite of which the difference was statistically significant. Analyzing these studies in greater

detail, we observed that the intervention by O’Kroy and Coast²⁴ consisted of a continuous training protocol in healthy persons and in the case of Hill et al.²² the training protocol was interval-based, but in patients with chronic obstructive pulmonary disease. Once again, the anthropometric characteristics and health of our sample can offer a plausible explanation to the lack of effectiveness of the IT device: institutionalization, presence of comorbidity, inability to walk and RM weakness (according to Simões et al.,²⁵ maximum respiratory pressures are considerably low in institutionalized seniors, PI_{\max} from -44.5 and 33.06 cm H₂O and PE_{\max} between 41.94 and 34.78 cm H₂O). Another possible explanation for the increase in PI_{\max} and PE_{\max} in the CG could be the learning effect of the maneuvers for measuring maximum respiratory pressures described by Larson et al.¹¹

As for the non-significant improvement observed in PE_{\max} , we can mention that, although the threshold device (Threshold® IT) was designed for training inspiratory muscles, it is possible that the expiratory muscles are also involved, as argued by Breslin.²⁶ In the recent study by Barbalho-Moulim et al.²⁷ there was also an observed non-significant increase in PE_{\max} (26%) after a training protocol with Threshold® IT (15 min per session, 6 sessions per week, for 2–4 weeks). In this study, the population studied was different from the present study, especially concerning RM weakness and the mean age of the population. Therefore, we did not have available any similar studies with which to compare our results.

Furthermore, the workload that the TG was subjected to increased over time and can partially explain the values and the improvement observed for PI_{\max} , PE_{\max} and MVV between the post-training and follow-up measurements (Figs. 2–4). The increase in workload seen in the TG from post-training to follow-up can be explained as a maintained effect of the training, which did not appear in the CG. In addition, the perception of the exertion did not change during the 6-week period. In this regard, it is interesting to mention that, although there was not a significant increase in PI_{\max} compared with CG, the effect of the intervention was perceived by the trained participants as they were able to train at significantly greater loads with a similar level of exertion.

Study Limitations and Strengths

Based on the low values of the maximum respiratory pressures, 6 weeks of training may be too short of a time to observe a substantial effect of training in elderly women with important functional limitations. The *Respiratory Rehabilitation Guidelines*²⁸ recommend longer training periods (between 6 and 12 weeks) and indicate that 12 or more weeks of intervention tend to produce a greater maintained benefit. Although the training protocol that has been used in this study is similar to that proposed by Hill et al.,⁹ several circumstances motivated the change in the duration and frequency of sessions of the protocol developed: (a) the presence of comorbidity and high rate of mortality; and (b) the passivity of institutionalized elderly subjects.

The limitations mentioned indicate the need for future research that demonstrates the effectiveness of the Threshold® IT in the weakest elderly populations. Future studies should include longer training periods, other possible modalities for specific RM

training, as well as the placebo group, in order to be able to measure the effects of training and avoid the possible influence of learning. Therefore we believe it is convenient to include other measures that are potentially relevant, like the effect on capacity for exertion and improved dyspnea and quality of life, through questionnaires that have been validated for this population.

To our knowledge, this is the first study in an elderly institutionalized population, with functional deterioration and muscle weakness, that has applied a specific RM training protocol. The novelty and importance of this clinical assay lies in certain aspects, such as: (a) mean age (85 ± 6), which is 10–15 years older than the mean age of previous studies; (b) the use of Threshold® IT; (c) the measurement of PI_{\max} , PE_{\max} and MVV at 4 time intervals, unlike previous research measuring only at pre- and post-intervention^{11,13}; and (d) the sample size larger than that used in previous studies ($n=5-17$), both in adults and the elderly, in healthy persons as well as ill patients. Last of all, this study indicates the importance of respiratory intervention and points out the difficulties for studying such a population.

Clinical Relevance

Studies of this type offer health-care professionals the opportunity to widen their understanding through an intervention in a growing collective that to date has not been extensively studied: the elderly. Furthermore, the results found in this collective in particular could be generalized to other collectives with different ages but similar health conditions. Therefore, we are promoting a greater understanding of non-invasive treatments that could be applied in populations with comorbidity and an important degree of dependence.

In conclusion, we can state that the use of the Threshold® IT device in an interval-based 6-week training program does not produce a significant improvement in the parameters related with RM strength and resistance in elderly women with muscle weakness and important functional limitation.

Funding

This study has been partially funded by research grant PSI2010-21334.

Conflict of Interests

The authors declare having no conflict of interests.

Acknowledgements

The authors would like to thank all the participating seniors for their collaboration. We would also like to show our most sincere thanks to all the physiotherapists who have supervised the training protocol, especially José Moret Vilar. Last of all, we would like to thank the socio-sanitary personnel from the participating nursing homes for their availability and advice: Ballesol-Valencia and El Amparo de Quart de Poblet (Valencia) nursing homes.

3. At the end of the session

4. Equally during the entire session

9. Do you consider the rest between cycles/exercises necessary? Yes 1 No 0 NS/NC

Block C. Final assessment (week 7). Training observations:

10. How do you feel now compared to before starting the training program? Worse 0 Same 1 Better 2

11. If you have missed a training session, please indicate the reason: 1 / 2

1. Illness or doctor's appointment

2. Other (visit, leisure, etc.)

12. Would you change any of the conditions of the exercise program?

12.1. No change Yes 1 No 0

12.2. Time of year Yes 1 No 0

12.3. Number of weekly sessions Yes 1 No 0

12.4. Number of total weeks Yes 1 No 0

12.5. Other (schedule, etc.) Yes 1 No 0

13. Have you had a cold during the study (**question for both groups**)? Yes 1 No 0

14. If you had to decide whether to participate again in this respiratory exercise protocol, would you participate?

Yes 1 No 0 Not sure

15. How satisfied are you for having participated in the respiratory exercise protocol?

1	2	3	4	5	6	7	8	9	10
Not satisfied			More or less				Very satisfied		

References

- Janssen I, Heymsfield SB, Ross R. Low relative skeletal muscle mass (Sarcopenia) in older persons is associated with functional impairment and physical disability. *J Am Geriatr Soc.* 2002;50:889–96.
- Landi F, Cesari M, Onder G, Lattanzio F, Gravina EM, Bernabei R. Physical activity and mortality in frail, community-living elderly patients. *J Gerontol A Biol Sci Med Sci.* 2004;59:833–7.
- Watsford ML, Murphy AJ, Pine MJ, Coutts AJ. The effect of habitual exercise on respiratory-muscle function in older adults. *J Aging Phys Act.* 2005;13:34–44.
- Summerhill EM, Angov N, Garber C, McCool FD. Respiratory muscle strength in the physically active elderly. *Lung.* 2007;185:315–20.
- Watsford ML, Murphy AJ, Pine MJ. The effects of ageing on respiratory muscle function and performance in older adults. *J Sci Med Sport.* 2007;10:36–44.
- Larson JL, Covey MK, Wirtz SE, Berry JK, Alex CG, Langbein WE, et al. Cycle ergometer and inspiratory muscle training in chronic obstructive pulmonary disease. *Am J Respir Crit Care Med.* 1999;60:500–7.
- Weiner P, Azgad Y, Ganam R. Inspiratory muscle training combined general exercise reconditioning in patients with COPD. *Chest.* 1992;102:1351–6.
- Watsford M, Murphy A. The effects of respiratory-muscle training on exercise in older women. *J Aging Phys Act.* 2008;16:245–60.
- Hill K, Cecins NM, Eastwood PR, Jenkins SC. Inspiratory muscle training for patients with chronic obstructive pulmonary disease: a practical guide for clinicians. *Arch Phys Med Rehabil.* 2010;91:1466–70.
- Lötters F, van Tol B, Kwakkel G, Gosselink R. Effects of controlled inspiratory muscle training in patients with COPD: a meta-analysis. *Eur Respir J.* 2002;20:570–6.
- Larson JL, Kim MJ, Sharp JT, Larson DA. Inspiratory muscle training with pressure threshold breathing device in patients with chronic obstructive pulmonary disease. *Am Rev Respir Dis.* 1988;138:689–96.
- Gosselink R. Breathing techniques in patients with chronic obstructive pulmonary disease (COPD). *Chron Respir Dis.* 2004;1:163–72.
- Belman MJ, Gaesser GA. Ventilatory muscle training in the elderly. *J Appl Physiol.* 1988;64:899–905.
- de Andrade AD, Silva TN, Vasconcelos H, Marcelino M, Rodrigues-Machado MG, Filho VC, et al. Inspiratory muscle activation during threshold Therapy in elderly healthy and patients with COPD. *J Electromyogr Kinesiol.* 2005;15:631–9.
- Fonseca MA, Cader SA, Dantas EH, Bacelar SC, Silva EB, Leal SM. Respiratory muscle training programs: impact on the functional autonomy of the elderly. *Rev Assoc Med Bras.* 2010;56:642–8.
- Harms CA. Does gender affect pulmonary function and exercise capacity? *Respir Physiol Neurobiol.* 2006;151:124–31.
- Miller MR, Hankinson J, Brusasco V, Burgos F, Casaburi R, Coates A, et al. Standard of spirometry. *Eur Respir J.* 2005;26:319–38.
- ATS/ERS. Statement on respiratory muscle testing. *Am J Respir Crit Care Med.* 2002;166:518–624.
- Enright PL, Kronmal RA, Manolio TA, Schenker MB, Hyatt RE. Respiratory muscle strength in the elderly: correlates and reference values. *Am J Respir Crit Care Med.* 1994;149:430–8.
- Black LF, Hyatt RE. Maximal respiratory pressures: normal values and relationship to age and sex. *Am Rev Respir Dis.* 1969;99:696–702.
- Neder JA, Andreoni S, Lerario MC, Nery LE. Reference values for lung function tests: II. Maximal respiratory pressures and voluntary ventilation. *Braz J Med Biol Res.* 1999;32:719–27.
- Hill K, Jenkins SC, Philippe DL, Shepherd KL, Green DJ, Hillman DR, et al. High-intensity inspiratory muscle training in COPD. *Eur Respir J.* 2006;27:1119–28.
- Borg G. The Borg CR10 scale folder. A method for measuring intensity of experience. Hasselby, Sweden: Borg Perception; 2004.
- O'Kroy JA, Coast JR. Effects of flow and resistive training on respiratory muscle endurance and strength. *Respiration.* 1993;60:279–83.
- Simões RP, Castello V, Auad MA, Dionísio J, Mazzonetto M. Prevalence of reduced respiratory muscle strength in institutionalized elderly people. *Sao Paulo Med J.* 2009;127:78–83.

26. Breslin EH. Respiratory muscle training in the treatment of respiratory muscle dysfunction: The state of the science. *Rehabil Nurs*. 1997; 1996.
27. Barbalho-Moulim MC, Miguel GPS, Forti EMP, Campos FA, Costa D. Effects of preoperative inspiratory muscle training in obese women undergoing open bariatric surgery: respiratory muscle strength, lung volumes, and diaphragmatic excursion. *Clinics*. 2011;66:1721-7.
28. Ries AL. Pulmonary rehabilitation: Summary of an Evidence-Based Guideline. *Respir Care*. 2008;53:1203-7.