



Review

Lung Function Tests in Clinical Decision-Making[☆]

Luis Puente Maestú,* Julia García de Pedro

Pruebas de Función Respiratoria y Broncoscopia, Hospital General Gregorio Marañón, Universidad Complutense de Madrid, Madrid, Spain

ARTICLE INFO

Article history:

Received 19 December 2011

Accepted 26 December 2011

Available online 28 March 2012

Keywords:

Lung function tests

Diagnosis

Prognosis

Palabras clave:

Pruebas de función respiratoria

Diagnóstico

Pronóstico

ABSTRACT

In this article, we review the utility of the most common lung function tests (spirometry, reversibility test, peak expiratory flow, lung volumes, maximal respiratory pressure, carbon monoxide transference, arterial blood gas, 6-min walk test and desaturation with exercise and ergospirometry) related to the most frequent pathologies (dyspnea of undetermined origin, chronic cough, asthma, COPD, neuromuscular diseases, interstitial diseases, pulmonary vascular diseases, pre-operative evaluation and disability evaluation). Our analysis has been developed from the perspective of decision-making, clinical interpretation or aspects that the physician should take into account with their use. Consequently, the paper does not deal with aspects of quality, technique or equipment, with the exception of when regarding costs as we believe that this is an important element in the decision-making process. The document is extensively supported by references from the literature.

© 2011 SEPAR. Published by Elsevier España, S.L. All rights reserved.

Las pruebas funcionales respiratorias en las decisiones clínicas

RESUMEN

En este artículo revisamos primero por pruebas (espirometría, prueba de reversibilidad, flujo espiratorio pico, volúmenes pulmonares, presiones respiratorias máximas, transferencia de monóxido de carbono, gasometría arterial, prueba de marcha de 6 min y desaturación con ejercicio y ergoespirometría), y luego por patologías más frecuentes (disnea no aclarada, tos crónica, asma, EPOC, enfermedades neuromusculares, enfermedades intersticiales, enfermedades vasculares pulmonares, valoración preoperatoria y valoración de la discapacidad), la utilidad de las pruebas funcionales respiratorias más habituales desde la perspectiva de la toma de decisiones, de la interpretación clínica o de aspectos que el clínico debe tener en cuenta a la hora de utilizarlas. En consecuencia, no se incide en aspectos de calidad, de la técnica ni de los equipos, salvo referencia a los costos, porque pensamos que es un elemento importante en la toma de decisiones. El documento está ampliamente fundamentado con referencias a la literatura.

© 2011 SEPAR. Publicado por Elsevier España, S.L. Todos los derechos reservados.

Introduction

Lung function studies are a key part of the diagnostic evaluation and follow-up of patients with respiratory diseases. In addition, they have other very important clinical applications, such as evaluating surgical risk, disability, and prognosis.¹ The information they provide is objective, precise, reproducible, and reliable.

There are several different lung function tests (LFT), and each has its indications. Those that are referred to as basic LFT are

baseline spirometry and flow–volume curve, bronchodilator test, and arterial blood gasses. Other important tests in clinical practice are the carbon monoxide transference test (DL_{CO}), lung volume determination, bronchial provocation tests, exercise tests and the determination of maximal pressures. In this review, we will present their most relevant aspects.

In order to carry out all these tests, different equipment is needed, which must meet the technical requirements established by current guidelines.^{1,2} Likewise, it is essential to check the calibration of the devices prior to their use, as well as to follow the established regulations for hygiene and control of infection.² The personnel who administer the tests should be familiarized with the equipment and have sufficient experience in their duties to obtain quality results. Patients should follow the previous preparation instructions, and they should be explained how to correctly perform the tests.²

[☆] Please cite this article as: Puente Maestú L, García de Pedro J. Las pruebas funcionales respiratorias en las decisiones clínicas. Arch Bronconeumol. 2012;48:161–9.

* Corresponding author.

E-mail address: lpuente@separ.es (L. Puente Maestú).

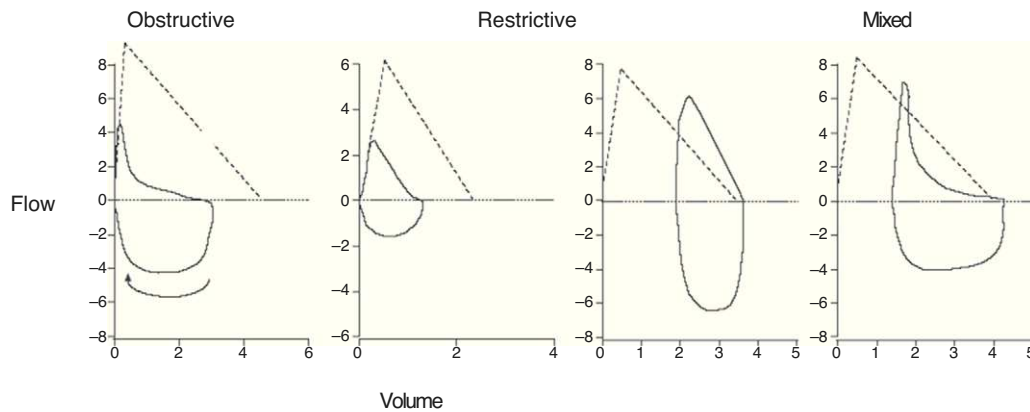


Fig. 1. Morphology of the flow–volume curve in the different respiratory function patterns.

Lung Function Tests

Spirometry and Flow–Volume Curve

Spirometry measures the forced expiratory volume in 1 s (FEV_1) and the forced vital capacity (FVC), and it is the most accessible and useful lung function test. It takes 10–15 min to perform and the equipment costs from 2000 to 6000€. The test entails practically no risk, and each test costs approximately 40€. If the spirometer is able to collect data for more than 30 s, slow vital capacity (SVC) can also be measured. SVC increases the sensitivity of spirometry for detecting obstruction,^{1–3} but it does require the test to be longer. Other parameters are mesoexpiratory flow (MEF 25%–75%) and instantaneous maximum flow at 75%, 50%, or 25% of FVC (MEF 75%, 50%, 25%). These parameters are considered indicators of the state of the small airway and a statistical correlation has been observed in subject groups. They are not, however, very sensitive due to their variability, and the cut-points (5% percentile) are nearly 50%⁴ in subjects >50 years of age.⁵

The morphology of the flow–volume curve is very useful for detecting the characteristic concavity of the slowing of expiration at low volumes in obstructive patterns⁶ and the convexity in restrictive patterns⁶ (Fig. 1); moreover, it has a distinctive shape in upper airway obstruction, as shown in Fig. 2. It must be noted, however, that the sensitivity is low in tracheal stenoses measuring more than 1 cm in diameter.⁷

Correctly interpreting spirometry requires it being analyzed within the context of the patient's clinical data, but we can refer to general respiratory function patterns: obstructive, restrictive, and mixed (Fig. 3). The most important parameter for identifying an obstruction is an FEV_1/VC ratio <70%.^{2,6} This cut-point can lead to a

significant number of false positives in males over the age of 40 and in women over the age of 50, as well as the to the overdiagnosis of obstruction in seniors, asymptomatic subjects and non-smokers.^{6,8} It has therefore been recommended to use the lower limit of the confidence interval (LLN)=mean predicted value–(standard error of the residuals \times 1645),^{2,6} but tradition and the fact that this percentile is not available in the majority of the devices mean that it is not often used.

Spirometry also is able to evaluate the severity of ventilatory alterations.^{2,6} To do so, categories have been defined as a simple conceptual framework depending on post-bronchodilator FEV_1 for obstructive defects and according to vital capacity (VC) or total lung capacity (TLC) for restrictive defects.^{2,6} The cut-points of the different guidelines are shown in Table 1. These cut-points are related with the ability to perform daily activities, morbidity and mortality in COPD,^{9–13} but these are less relevant in asthma, where hyperre-activity, variability in function (and symptoms), and the response to treatment are more relevant factors than momentary FEV_1 .¹⁴ The cut-points are also not relevant in the obstruction of the upper airway.⁶

Although in most restrictive disorders worsened symptoms are accompanied by a drop in VC, VC may only be moderately reduced in diffuse interstitial lung diseases (DILD) with a marked loss in diffusion capacity and severe blood gas alterations.^{6,15–17} Severe respiratory failure may occur in patients with rapidly progressive neuromuscular diseases who had had normal or slightly reduced VC shortly before.⁶

Another aspect of FEV_1 and VC is that they are general indicators of health related with life expectancy, even in non-smoker patients¹⁸ (Fig. 4).

Spirometry is very useful for following evolution and monitoring functional changes over time. Table 2 describes the cut-points in

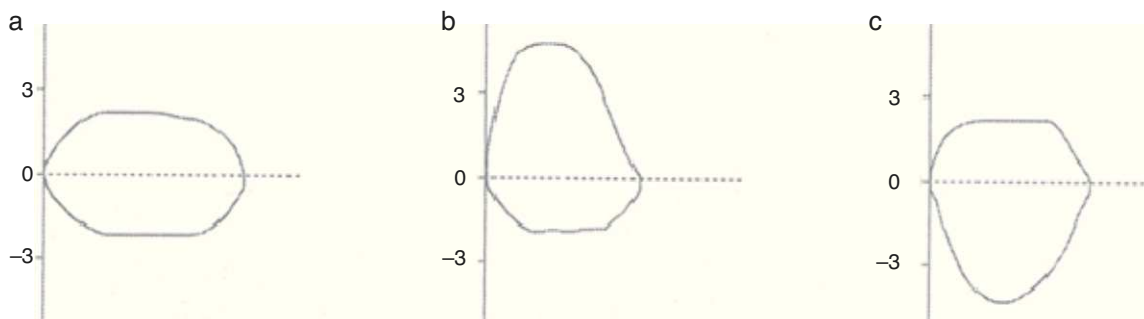


Fig. 2. Morphology of the flow–volume curve in the obstruction of the upper airway: (a) permanent obstruction; (b) variable extrathoracic obstruction: the obstruction increases during inspiration; (c) variable intrathoracic obstruction: the obstruction increases during expiration.

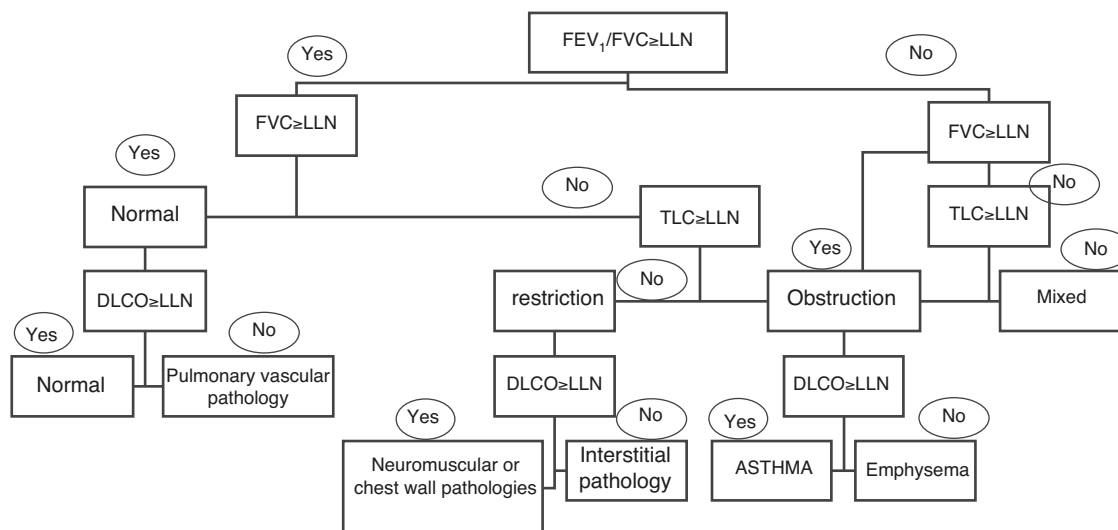


Fig. 3. Algorithm for interpreting the respiratory function tests. FEV₁: forced expiratory volume in 1 s; FVC: forced vital capacity; LLN: lower limit of normal; TLC: total lung capacity.

Table 1
Gradation of The Severity According to Different Guidelines.

Obstructive Alteration	Restrictive Alteration		
	FEV ₁	VC	
<i>ATS/ERS</i>			
Mild	>70%	Mild	>70%
Moderate	60–69%	Moderate	60–69%
Moderate–severe	50–59%	Moderate–severe	50–59%
Severe	35–49%	Severe	35–49%
Very severe	<35%	Very severe	<35%
<i>SEPAR</i>			
Mild	>65%	Mild	>65%
Moderate	50–64%	Moderate	50–64%
Severe	35–49%	Severe	35–49%
Very severe	<35%	Very severe	<35%
<i>Classification (GOLD) of COPD severity</i>			
Stage I, mild	≥80%		
Stage II, moderate	50–80%		
Stage III, severe	30–50%		
Stage IV, very severe	<30%		

ATS: American Thoracic Society; COPD: chronic obstructive pulmonary disease; ERS: European Respiratory Society; FEV₁: forced expiratory volume in 1 s; GOLD: Global Initiative for Chronic Obstructive Lung Disease; SEPAR: Spanish Society of Pulmonology and Thoracic Surgery; VC: vital capacity.

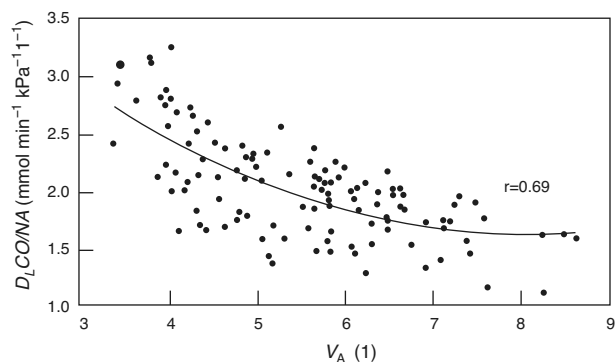


Fig. 4. Alveolar diffusion–volume ratio. DL_{CO}: diffusing capacity for carbon monoxide in one single breath; V_A: alveolar volume. From Frans et al.⁵²

order to consider a change significant in accordance with what was published in the literature.⁶

Reversibility Test (Bronchodilator)

The reversibility test costs 40€ more than spirometry (app. 80€ in total). It is indicated in all asthmatics at the time of diagnosis¹⁹ and, if there is still obstruction, at follow-up. As in many laboratories the medicine is routinely withdrawn, we should warn the patient and the laboratory not to withdraw it if our objective is to verify the response to treatment (individual therapeutic assay).

The definition of COPD itself indicates that this disease is characterized by “airflow limitation that is not reversible”²⁰ and “there are no marked changes in the function over the course of several months”.²¹ This means that the condition should be met that, if there is reversibility, it is not total, and therefore the measured FEV₁/VC ratio should be <70% after bronchodilators. In fact, epidemiological studies have shown that the prevalence of COPD reduces between 10% and 40% using post-bronchodilator FEV₁/VC, although the socioeconomic impact of said difference is not known.²¹

A positive result to bronchodilators cannot distinguish between COPD and asthma,^{20,21} although improvements of more than 400 ml after bronchodilators or glucocorticoids suggest the second possibility²¹ or at least a mixed phenotype.²²

Table 2
Significant Changes in the Spirometric and Carbon Monoxide Diffusing Capacity Variables.

	FVC	FEV ₁	MEF 25–75%	DL _{CO}
<i>Daily</i>				
Normal	≥5%	≥5%	≥13%	≥7%
COPD patients	≥11%	≥13%	≥23%	
<i>Weekly</i>				
Normal	≥11%	≥12%	≥21%	≥2 ^a
COPD patients	≥20%	≥20%	≥30%	≥1.3
<i>Annually</i>				
	≥15%	≥15%		≥10%

FVC: forced vital capacity; FEV₁: forced expiratory volume in 1 s; MEF 25–75%: mesoexpiratory flow at 25–75%; DL_{CO}: single-breath transference of carbon monoxide

^a In mmol min⁻¹ kPa⁻¹; in order to transform into the units most frequently used in the United States (mL min⁻¹ mmHg⁻¹), multiply by ~3 (3.013). Taken from Pellegrino et al.⁶

One concept that has changes in recent years, based on large clinical assays, is that the presence or absence of bronchodilation, except when very pronounced (>400 ml), does not seem to precisely predict symptom alleviation, changes in exercise capacity, long-term response or response to either corticosteroids or bronchodilators.^{23,24} Therefore, the bronchodilator test is not a valid guideline for treatment.

As for the prognosis, there is abundant evidence that identifies FEV₁ as a risk factor in COPD,⁹⁻¹³ and, in this case as well as in the diagnosis, the optimal parameter is post-bronchodilator FEV₁. Reversibility has been found to be associated with an accelerated decrease in FEV₁, but not all studies find this association.²⁵

The percentage of COPD patients who respond to bronchodilators is variable. In the UPLIFT study,²⁶ which administered ipratropium bromide and salbutamol with spirometry repeated 30 min afterwards, 52% of the patients responded to bronchodilators. Nevertheless, these levels were 64%, 48%, and 18% when the patients were classified into GOLD stages II, III, or IV. It has been seen that up to 35% of patients with an initial negative bronchodilator test, the result may be positive in later tests. However, two tests can detect the majority of patients (88%) who occasionally may respond to bronchodilators, and therefore its routine use would not be justified in patients with COPD who already have one or at most two previous bronchodilation tests.²⁶

Any drug may be used, but due to questions of effectiveness, an inhaled, fast-acting β_2 -agonist is almost always used (salbutamol is most often used at a dose of 400 μ g or 4 puffs taken 30 s apart and with a proper inhalation technique). The effect begins 5 min after the inhalation and reaches its maximum after 20 min. If ipratropium is used, the recommended dose is 160 μ g (8 puffs) and the "post" spirometry is done 45 min later. Another way to evaluate reversibility is to administer a test treatment (individual therapeutic assay) and to evaluate the patient 30 days later, making the laboratory and the patient aware that the medication prescribed should not be withdrawn before doing the effectiveness evaluation test.

Peak Expiratory Flow

Peak expiratory flow (PEF) is the maximal flow that a person can exhale during a short maximal expiratory effort after complete inspiration. In patients with asthma, PEF correlates with FEV₁, but it should not be used as its substitute. Peak expiratory flow is a measurement that is easy to do with a device that costs 30€, but it is not very popular. It has the following uses:

Diagnosis

Variations of more than 20% are diagnostic for asthma in the proper context.²⁷ PEF can also allow us to observe the variability in certain situations, such as an improvement during vacation or worsening when exposed to certain environments, which, if there are economic or legal implications, should be checked religiously.

Monitoring Disease

In order to do so, we should establish the initial value by taking measurements for 15 days in conditions of clinical stability and maximum treatment²⁸ and use this reference in order to establish plans of action²⁸; however, it is not easy to maintain long-term adherence,²⁹ which limits its use.

Non-Specific Provocation Tests

There are different non-specific provocation tests (ATP, mannitol, isocapnic hyperventilation, exercise, food coloring) that are useful in specific contexts. These tests take time and cost 200€.

The test may be indicated when the asthma diagnosis is in question (atypical symptoms, normal spirometry), when a patient is suspicious of having occupational asthma or asthma induced by irritants, and when a test is required to rule out asthma in divers, athletes, military personnel or other individuals in whom bronchospasm would be an unacceptable risk for themselves or for other people, or it is required by regulations in order to use anti-asthma medication,³⁰ and it is not contraindicated. In the cases in which asthma is triggered by exercise, exertional asthma has professional implications; given the persistence of symptoms with exercise in a correctly treated asthmatic, exercise provocation tests or isocapnic hyperventilation tests may be indicated.³⁰

Although non-specific bronchial provocation tests can evaluate asthma severity and monitor its treatment, they are not used for this objective in clinical practice.³⁰

Interpretation of a Negative Test

In general, a negative test rules out asthma, except in certain cases of allergic asthma or asthma induced by irritants in which the test was done a time after the exposure and the symptoms.^{30,31}

Interpretation of a Positive Test

Approximately 1%-7% of the general asymptomatic population has bronchial hyperreactivity (up to 26% if smokers or atopic patients are included),³² although there are those who believe that these patients are mild asthmatics who do not perceive their symptoms.^{30,33} Therefore, the diagnosis should not be based on a positive hyperreactivity test, and it should be confirmed that the symptoms of the patient disappear with the treatment.

Determination of Static Volumes and Lung Resistances

The determination of pulmonary volumes and capacities cannot be measured with spirometry, including: residual volume (RV), functional residual capacity (FRC), and total lung capacity (TLC). It costs about 150€. The most widely used methods are the helium dilution technique and nitrogen washout (FRC), which can usually be measured with the same device as carbon monoxide diffusion and body plethysmography (FRC_{pleth}), which requires a booth that costs approximately 36 000€. Plethysmography gives results that are somewhat higher than the other two methods, but it is the fastest, most precise and reproducible method.⁶ The TLC measured during the determination of DL_{CO} should never be used as a measurement of actual TLC because it is underestimated, and the greater the obstruction the greater the underestimation.^{6,34}

When studying lung volumes, we can find two pathological patterns: restriction, defined by a TLC less than 80% of the reference value, and hyperinflation, defined by either an FRC% or an RV/TLC ratio above 120%. There are no data to document the use of FRC or RV categories in airflow obstruction or TLC in pulmonary restriction in order to classify severity, as done in spirometry.

Cases of low TLC and normal VC are exceptional^{3,6,35-37}; therefore these measurements are generally not very useful in subjects with normal VC. Its use has not been demonstrated in the differential diagnosis between emphysema and chronic bronchitis, or between COPD and asthma.^{36,38} There is a general correlation between the reduction in FEV₁ and the increase in RV,^{36,38} although the agreement is not good in up to 15%^{36,38} thus it could help to interpret some cases of unjustified dyspnea in obstructive patients when unexpected hyperinflation is detected. In patients with COPD

with or without normal VC, these measurements are useful for selecting patients for volume reduction, requiring more than 100% TLC and 135% FRC.³⁹

The measurements of volumes can be useful in the study of subjects with low VC. In cases of mixed pattern, only approximately 10% have low TLC (the majority of them have an FEV₁/VC >60% and an FEV₁ >40%),^{3,36} so this would be the target population for measuring lung volumes.

In restrictive diseases, TLC has prognostic value,¹⁶ but VC is almost always used as it is easier to measure. In cases with typical restrictive spirometries (meaning when VC is lower, the FEV₁/VC is higher [85%–90%] and the flow–volume curve has the characteristic convex pattern [Fig. 1]⁶), and if the symptoms are compatible, it is probably not necessary to confirm the restriction by measuring TLC. If the lower VC on spirometry is not accompanied by a normal or slightly increased FEV₁/VC, this is frequently due to the fact that the inspiration or expiration has not been maximal and in up to 50% of these patients the repetition of the spirometry demonstrates that the subject is normal.^{3,6,40} In these cases, it would also be indicated to measure volumes if the VC continues to be low after repeating spirometry.

Airflow resistance can be measured by plethysmography, but this is rarely used in clinical practice due to its variability and because even the most sensitive parameter, specific resistance, generally reflects more of the obstruction of the large airways than of the more peripheral areas.^{6,34,41} It may be useful in patients who are incapable of correctly doing spirometry, as it requires less patient collaboration.

Maximal Respiratory Pressures

Maximal inspiratory pressure (PI_{MAX}) is the maximal pressure that the patient can produce when trying to inhale through a blocked mouthpiece after maximum expiration (from RV). PI_{MAX} pressure can be measured in the nose by inserting a nasal plug and sniffing with the other open nostril. This procedure is called sniff nasal-inspiratory pressure (SNIP), and it has the same indications as PI_{MAX}. Its advantage is that it can measure pressure in patients with neuromuscular diseases who are unable to close their mouths properly because sniffing is a natural maneuver that is more easily understood by patients and which they are sometimes able to perform better. Usually, both are measured (PI_{MAX} and SNIP), and the better of the two is considered more representative, which is later used in the follow-up. Maximal expiratory pressure PE_{MAX} is the maximal pressure exerted into a blocked mouthpiece, measured during forced expiration after complete inhalation (from TLC), with inflated cheeks. It is easy to measure with a simple pressure manometer connected to a mouthpiece that costs between 1500 and 2000€. The cost of the test is 60€, plus an additional 80€ if combined with sitting and standing spirometry. PI_{MAX} and PE_{MAX} are measurements of the capacity for generating effort of the inspiratory and expiratory muscles, and therefore they can be affected by the configuration of the thorax, particularly the diaphragm, without any alterations that are muscular, as occurs in hyperinflated COPD. PI_{MAX} (SNIP) and average PE_{MAX} for adult men are –100 cmH₂O (–98 hPa) and 170 cmH₂O (167 hPa), respectively, meanwhile the corresponding values for adult women are approximately –70 cmH₂O (–69 hPa) and 110 cmH₂O (108 hPa), respectively.^{42,43} The lower limit of the normal range is about two-thirds of these values.⁶

Whenever there is an inexplicable reduction in vital capacity or there is clinical suspicion of respiratory muscle weakness. Monitoring PI_{MAX} (SNIP) and PE_{MAX} is useful, together with VC, for following the evolution of patients with neuromuscular disorders (Table 3). However, they are only able to verify the situation at the time of the measurement and their prognostic value is limited, as some of them

Table 3
Processes in Which It May Be Useful to Measure Respiratory Pressures.

Processes	Examples
CNS diseases	Motor neuron diseases (ALS) Poliomyelitis Spinal cord injuries
Neuropathies	Guillain-Barré Bilateral diaphragmatic paralysis Critical illness neuropathy
Neuromuscular disorders	Myasthenia gravis Botulism
Muscle disease	Polymyositis Dystrophies (Duchenne, Steinert, etc.) Myopathies, especially myopathy due to maltase acid deficiency (Pompe) and mitochondrial myopathies

ALS: amyotrophic lateral sclerosis; CNS: central nervous system.

evolve with flare-ups and the muscular function may unpredictably worsen at any time.

Single-Breath Carbon Monoxide Transference

The diffusing capacity of the lung for carbon monoxide in a single breath (DL_{CO}), also known as carbon monoxide transference factor (TL_{CO}), is useful in the evaluation of both restrictive and obstructive disease.⁴⁴ It requires a device that costs between 18 000 and 24 000€. The cost of a test is about 100€. DL_{CO} should always be given as corrected for hemoglobin, which in the majority of devices appears as DL_{COc}, and, if possible, for carboxyhemoglobin.

A reduction in DL_{COc} with normal spirometry suggests pulmonary vascular disorders,⁶ but it can also be seen in incipient DILD or emphysema.⁶ A reduced DL_{CO} in the presence of restriction suggests DILD,^{15,16} although sometimes restriction is seen in pulmonary vascular diseases.⁴⁵

A reduced DL_{CO} in the presence of obstruction suggests emphysema⁴⁶ and also with other much rarer diseases such as histiocytosis X, lymphangioleiomyomatosis, and tuberous sclerosis with lung affection.^{47,48}

In heart failure due to left ventricular failure, a low DL_{CO} can be observed that is directly related with severity and is a powerful prognostic factor of the disease.¹⁵

A high DL_{CO} can be seen in asthma,⁴⁹ obesity,⁵⁰ and in intrapulmonary hemorrhage.⁵¹

DL_{CO} can also be used to categorize disease severity.⁶

The DL_{CO}/V_A, also known as K_{CO} diffusion constant, is theoretically able to differentiate between the processes that reduce alveolar volume (V_A) that limit the normal expansion of the chest (that behave as a loss in V_A) or that, as in COPD, the effective V_A is reduced in such a way in that the gases used to measure DL_{CO} are not completely diluted by the entire alveolar space (reduced in proportion with the V_A) from other diseases that reduce the DL_{CO} because they affect diffusely the exchange surface either due to thickening of the alveoli or due to the loss in capillarization. However, the comparison with the predicted value obtained in subjects with normal V_A can lead to errors when the V_A is low⁵² as the TL_{CO}/V_A does not vary linearly with V_A (Fig. 1).⁵³ Therefore, there is a great debate about their clinical use.^{6,54,55} Our experience is that, knowing the clinical symptoms of the patient, DL_{CO}/V_A usually provides little information (Table 4).

Arterial Blood Gas Analysis

In stable ambulatory patients, baseline arterial blood gas analysis (without oxygen supplementation), or ABG, can be a useful complement for lung function tests in specific patients. It costs about 30€. It is used to confirm hypoventilation when it is

Table 4
Severity of the Alterations in Carbon Monoxide Diffusing Capacity.

Mild	>60% and <LLN
Moderate	40%–60%
Severe	≤40

%, % predicted; LLN: lower limit of normal.

suspected based on the clinical history (e.g. neuromuscular disease or advanced COPD). ABG is also used to confirm chronic hypoxemia and to provide a more detailed evaluation of the severity. It is a painful test, so its use should not be routine and it is only indicated in patients who have low SatO₂ on pulse-oximetry.

Measurement of Exhaled Nitric Oxide

In recent years, there has been growing interest in the determination of the nitric oxide fraction in exhaled air (FE_{NO}), which has become a routine test after standardized guidelines were published.⁵⁶ The cost of the test is about 50€. It is a quantitative, simple, non-invasive, safe method for measuring the inflammation of the airways, and it is a tool that complements other LFT for the evaluation of bronchial diseases like asthma.

Even though its role is still not free from controversy due to the fact that the evidence on which the recommendations are based are not from clinical assays, measuring FE_{NO} can be used for⁵⁷:

- Detecting eosinophilic inflammation of the respiratory tract (FE_{NO} >35–50 ppb),^{19,57} which in the presence of compatible symptoms or airflow obstruction (FEV₁/VC <70%) can establish a diagnosis of presumed asthma (or at least presumed response to treatment with inhaled corticosteroids similar to asthma) that obligatorily should be confirmed with the demonstration of acute reversibility or an “individual therapeutic assay” with inhaled or oral corticosteroids (see reversibility test) that improves the function or at least symptoms.¹⁹
- Determining the probability of response to corticosteroids in patients with chronic respiratory symptoms. The recommendation is:
 - To use a cut-point of ≤25 ppb to consider a subject as unlikely to respond.
 - To use a cut-point of more than 50 ppb to consider a subject as likely to respond.
 - In the intermediate levels (>25 and ≤50 ppb), evaluate depending on the symptoms.
- Monitoring the inflammation of the respiratory tract in order to determine the dose of corticosteroids. It is recommended to first establish whether the patient is still exposed to the allergens suspicious of being the cause of the airway inflammation. Based on the opinion of experts, the recommendation is to consider significantly those increases (lack of response) or decreases (response) in FE_{NO} that are greater than 20% for values of more than 50 ppb or greater than 10 ppb for values lower than 50 ppb from one visit to the next.
- Detecting the lack of compliance with corticosteroid treatment.

The 6-min Walk Test and Oxygen Desaturation During Exercise

The 6-min walk test (6MWT) is a good index for physical function,^{58–61} and it also has prognostic value in many chronic respiratory diseases.^{58,62–64} It costs about 50€. In general, healthy people can walk 400–700 m, depending on age, height, stature, and sex.^{59,61}

Desaturation during exercise, generally measured with a walk test, is an index with prognostic value in pulmonary vascular diseases, interstitial diseases, and COPD.⁶⁵ A fall in SpO₂ greater than

Table 5
Indications for the Exertion Test in Pulmonology.

<i>Evaluation of the tolerance to exercise and its limiting factors</i>
Observing the limitation of capacity for exertion
Analysis of the factors that limit exercise capacity
Distinction between dyspnea of respiratory or cardiac origin
Study of unexplained dyspnea with tests at rest
<i>Functional assessment and prognosis and detection of alterations that are caused by or noticeably worsen with exercise in chronic pulmonary diseases</i>
<i>Evaluation of disability in respiratory diseases</i>
<i>Exercise prescription in rehabilitation</i>
<i>Diagnosis of exercise-induced bronchospasm</i>
<i>Evaluation of the effects of therapeutic interventions</i>
<i>Pre-surgery evaluation in lung resection surgery</i>

4% (with a total under 93%) suggests important desaturation and it is used to evaluate the need for oxygen and its titration in patients with chronic pulmonary diseases.^{65–67}

Ergospirometry

There are multiple applications for cardiopulmonary exercise tests in pulmonology (Table 5). The equipment costs about 24 000€, plus 9000€ for the cycle-ergometer. The cost per test is 150€. It is beyond the purpose of this article to review in detail such tests, and interested readers are recommended to read more advanced papers.^{66–75} Maximal oxygen uptake has prognostic value in respiratory diseases.^{65,68,70–75}

Indications

LFT are useful for evaluating all types of pulmonary disease and as a screening for the presence of disease in personas with risk factors, such as smoking. Other indications for lung function tests are:

- Evaluating symptoms such as persistent chronic cough, wheezing, dyspnea, and cough at resting conditions or with exercise.
- Objectively evaluating bronchodilator treatment.
- Evaluating the effects of exposure to agents that are noxious for the lungs (dust or chemical products).
- Assessing patient risk before thoracic surgery and the prevention of any type of surgery in patients in whom unknown treatable lung disease is suspected.
- Objectively evaluating dysfunction or disability.

Chronic Dyspnea

Many lung diseases start slowly and insidiously and they finally become evident with non-specific symptoms, such as exertional dyspnea. LFT are an essential part of the diagnostic routine in these patients. Spirometry should be the first test and other tests should be ordered depending on its results. If the cause of exertional dyspnea remains unclarified after bronchodilation tests, DL_{CO}, and lung volumes, ergospirometry may be useful (Fig. 5).

Chronic Cough

This is a very frequent symptom and can be the cause of up to 40% of outpatient consultations in pulmonology.⁷⁶ When asthma or COPD is suspected due to the clinical history and chest radiograph, spirometry, and bronchodilator tests are necessary. Before ordering a hyperreactivity test, it must be verified that the patient has persistent cough (>8 weeks), that he/she is not taking

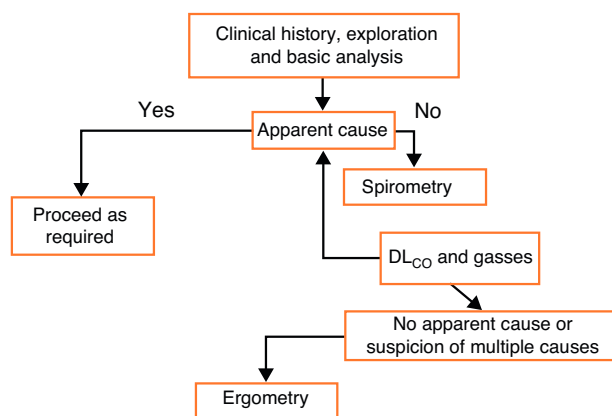


Fig. 5. Algorithm of lung function test use for evaluating dyspnea.

medication (angiotensin-converting-enzyme inhibitors) or has any other causes for cough (normal X-ray), and that he/she does not have a very high clinical probability for asthma, gastroesophageal reflux or rhinitis, in which case a previous individual therapeutic assay is preferable.^{76,77}

Asthma

Pre- and post-bronchodilator spirometries are indicated in the initial study of patients with suspicion of asthma, as well as during their follow-up. The demonstration of bronchodilation with compatible symptoms is very suggestive of asthma.¹⁹ Spirometry is also indicated when there are atypical asthma symptoms, such as oppression in the chest or cough during exercise or when exposed to cold air, dust, smoke or when laughing, which suggest bronchial hyperreactivity. In these cases, spirometry results may be normal when patients are asymptomatic and then not improve after bronchodilator use; therefore on a second visit a hyperreactivity test should be carried out.¹⁹ Alternatively, the FE_{NO} should be measured and, if high (>35–50 ppb), either a treatment assay should be done^{19,57} or the variability of the PEF should be measured for 15 days.¹⁹ The flow-volume curve can be useful for detecting vocal cord dysfunction in patients with atypical or difficult-to-control asthma.

COPD

FEV₁/VC <70% after bronchodilators (or several weeks of treatment)^{20,21} is a diagnostic criteria for COPD in patients with a history of smoking, exposure to biomass smoke or industrial dust and symptoms of chronic bronchitis.^{20,21} The bronchodilator test cannot distinguish between COPD and asthma unless it is suggested by the clinician and the response is very notable (what has been arbitrarily defined as >400 ml²¹); in addition, there is a mixed COPD phenotype that presents characteristics of both diseases.²² This also does not help decide on the treatment,^{23,24} unless it is very important and accompanied by other criteria suggestive of the mixed phenotype.²² The measurement of lung volumes is not usually useful in general, but it may be indicated in patients with a mixed pattern³⁶ and in cases in which volume reduction is being considered.³⁹ DL_{CO} can be useful to differentiate emphysema from chronic bronchitis; these two phenotypes do not have different treatments, but there is evidence that their evolution may be different, with an accelerated loss of FEV₁ in emphysematous patients.⁷⁸ Anecdotally, DL_{CO} can have a certain value to differentiate between COPD and asthma, as in this latter process it is never low and frequently high.⁴⁹ Arterial blood gas analysis under

stable conditions is painful and is only necessary when there is a suspicion of hypercapnic respiratory insufficiency or when the saturation due to pulse-oximetry is less than 92%. The exertion tests have a prognostic value,^{72,74,79} and the 6MWT distance has been integrated into the multifactorial BODE index⁶⁴ that stratifies risk better than FEV₁.²¹ There is, however, a lack of information about its cost-effectiveness, and although the determination of the BODE index offers additional prognostic information, the general feeling is that said information is not sufficient to justify the time and cost required to routinely do 6MWT in all patients.²¹ One variant of the 6MWT is used for oxygen titration when ambulatory oxygen therapy is prescribed.^{65–67}

Spirometry is essential in the follow-up of COPD patients in order to monitor the effectiveness of treatment (Table 2) and the progression of the disease.^{78,80} It does not seem to make sense to do more than one per year without any other reason than just for follow-up.^{78,80} We should expect reductions in FEV₁ between 30 and 40 ml/year. Higher reductions may be related with the emphysema phenotype, the persistence of smoking, poor control of exacerbations or insufficient treatment.^{23,81,82} These changes are below the test variability, so in order to interpret them quality spirometry should be available and done under the same conditions (same laboratory, same pharmacological setting, stable patient) and at several points (2 or 3 years), unless the decrease (or improvement) surpasses the test variability (Table 2). In patients with FEV₁ <1l, spirometry may not be particularly sensitive to change due to the variability of the test (12% or 190 ml). In these patients, other determinations such as measuring symptoms, quality of life, desaturation with exercise or tolerance of exertion can be more sensitive to the interventions and to the progressions of the disease than FEV₁ itself.^{65,83}

Neuromuscular Diseases

Since the advent of non-invasive mechanical ventilation, more and more patients with severe respiratory failure are maintained with this therapy, and the demand for tests to measure muscle strength has increased. From a clinical practice standpoint, VC is a useful screening test and its reduction of more than 25% in decubitus (normal, <5%) when comparing with the patient in an erect position is indicative of neuromuscular disease. The ability to cough effectively is usually lost when the VC is less than 30 ml/kg, and a VC <30% is considered to predict imminent respiratory failure in chronic neuromuscular diseases, but it should be accompanied by other measurements, like PaCO₂ and, sometimes, nocturnal capnography. Respiratory pressures are more sensitive than VC and they would be indicated in the diagnosis and follow-up as a complement, especially in those cases in which the reduction of the vital capacity in decubitus is not clear.

Diffuse Interstitial Lung Disease

Lung function tests should be considered within the context of the radiology results. Spirometry is useful to detect restriction (VC), but it seldom helps to establish the cause.⁸⁴ DL_{CO} is useful to screen for interstitial lung affection when interventions are scheduled (bone marrow transplant, chemotherapy) and in order to differentiate between intrinsic lung diseases and other causes of restriction, and it also has prognostic value.^{15,16,84} Desaturation during exercise also has prognostic value in these patients,^{65,84} and the 6MWT can be used to titrate ambulatory oxygen when needed.^{65,66} All these tests play a role in patient follow-up every 6–12 months, or when a change is presumed in the evolution of the disease.

Pulmonary Vascular Disease

Spirometry is indicated in the initial evaluation of pulmonary vascular diseases for their differential diagnosis with other processes.⁸⁵ Sometimes, there is an observed reduction in VC.⁶ DL_{CO} can play a screening role in the detection of pulmonary hypertension, for example in rheumatic diseases,^{6,86} and in evaluating its prognosis,^{44,85} although other devices including echocardiography and exertion tests are more often used.⁸⁵ Even though the 6MWT is more popular, ergospirometry can have advantages as it gives more physiological information and it is done in a safer setting, which is the lab.⁶⁵ The exertion tests are useful in following up these patients and for monitoring treatment effectiveness.^{65,85}

Pre-Surgery Evaluation

Lung function tests are only indicated when there is a suspicion of unknown or exacerbated respiratory disease that may be susceptible to improving with treatment and therefore reducing risk, because necessary surgery should never be contraindicated based on lung function.⁸⁷ Exceptions to this rule are surgery of the abdominal aorta⁸⁸ and lung resection surgery. In the latter, the combination of spirometry, DL_{CO}, and ergospirometry can better stratify the risk.^{71,88}

Evaluation of Disability

Spanish legislation (*Real Decreto* 1971/1999, of 23 December, regarding the procedure for recognizing, declaring, and determining the degree of disability) establishes that the evaluation of disability should be done based on spirometric criteria, DL_{CO} or maximal oxygen consumption.

Conflict of Interests

The authors declare having no conflict of interests.

References

- Crapo RO. Pulmonary-function testing. *N Engl J Med*. 1994;331:25-30.
- SEPAR 2011. Procedimientos de evaluación de la función pulmonar. In: Puente Maestú L, coordinador; Marín Trigo JM, Burgos Rincón F, Cobos Barroso N, Casanova Macario C, Cueto Ladrón de Guevara A, De Miguel Díez J, et al., editors. Manual SEPAR de Procedimientos, 1st ed. Madrid: Luzan; 2011.
- Aaron SD, Dales RE, Cardinal P. How accurate is spirometry at predicting restrictive pulmonary impairment? *Chest*. 1999;115:869-73.
- Glindmeyer HW, Lefante JJ, McCollister C, Jones RN, Weill H. Blue-collar normative spirometric values for Caucasian and African-American men and women aged 18 to 65. *Am J Respir Crit Care Med*. 1995;151:412-22.
- Flenley DC. Chronic obstructive pulmonary disease. *Dis Mon*. 1988;34:537-99.
- Pellegrino R, Viegi G, Brusasco V, Crapo RO, Burgos F, Casaburi R, et al. Interpretative strategies for lung function tests. *Eur Respir J*. 2005;26:948-68.
- Enright PL, Stoller JK, Hollingsworth H. Overview of pulmonary function testing in adults [accessed 11 February 2012]; 2011. Available at: <http://www.uptodate.com>.
- Hankinson JL, Odencrantz JR, Fedan KB. Spirometric reference values from a sample of the general U.S. population. *Am J Respir Crit Care Med*. 1999;159:179-87.
- Becklake MR, Rodarte JR, Kalica AR. NHLBI workshop summary. Scientific issues in the assessment of respiratory impairment. *Am Rev Respir Dis*. 1988;137:1505-10.
- Kanner RE, Renzetti Jr AD, Stanish WM, Barkman Jr HW, Klauber MR. Predictors of survival in subjects with chronic airflow limitation. *Am J Med*. 1983;74:249-55.
- Traver GA, Cline MG, Burrows B. Predictors of mortality in chronic obstructive pulmonary disease. A 15-year follow-up study. *Am Rev Respir Dis*. 1979;119:895-902.
- Anthonisen NR, Wright EC, Hodgkin JE. Prognosis in chronic obstructive pulmonary disease. *Am Rev Respir Dis*. 1986;133:14-20.
- Evaluation of impairment/disability secondary to respiratory disorders. American Thoracic Society. *Am Rev Respir Dis* 1986;133:1205-9.
- Guidelines for the evaluation of impairment/disability in patients with asthma. American Thoracic Society. Medical Section of the American Lung Association. *Am Rev Respir Dis* 1993;147:1056-61.
- Collard HR, King Jr TE, Bartelson BB, Vourlekis JS, Schwarz MI, Brown KK. Changes in clinical and physiologic variables predict survival in idiopathic pulmonary fibrosis. *Am J Respir Crit Care Med*. 2003;168:538-42.
- Wells AU, Desai SR, Rubens MB, Goh NS, Cramer D, Nicholson AG, et al. Idiopathic pulmonary fibrosis: a composite physiologic index derived from disease extent observed by computed tomography. *Am J Respir Crit Care Med*. 2003;167:962-9.
- American Thoracic Society. Idiopathic pulmonary fibrosis: diagnosis and treatment. International consensus statement. American Thoracic Society (ATS), and the European Respiratory Society (ERS). *Am J Respir Crit Care Med*. 2000;161:646-64.
- Neas LM, Schwartz J. Pulmonary function levels as predictors of mortality in a national sample of US adults. *Am J Epidemiol*. 1998;147:1011-8.
- Guía española para el manejo del asma [accessed 19 December 2011]; 2009. Available at: www.gemasma.com.
- Global Initiative for Chronic Obstructive Lung Disease. Global strategy for the diagnosis, management, and prevention of chronic obstructive lung disease. Global Initiative for Chronic Obstructive Lung Disease (GOLD); 2009-2011 [accessed 19 December 2011]. Available at: <http://www.goldcopd.org/Guidelineitem.asp?11=2&12=1&intid=2180>.
- National Clinical Guideline Centre. Chronic obstructive pulmonary disease: management of chronic obstructive pulmonary disease in adults in primary and secondary care. National Clinical Guideline Centre; 2010-2011 [accessed 19 December 2011]. Available at: <http://guidance.nice.org.uk/CG101/Guidance/pdf/English>.
- Soler-Cataluña JJ, Cosío B, Izquierdo JL, López-Campos JL, Marín JM, Agüero R, et al. Documento de consenso sobre el fenotipo mixto EPOC/Asma. *Arch Bronconeumol*, in press.
- Tashkin D, Kesten S. Long-term treatment benefits with tiotropium in COPD patients with and without short-term bronchodilator responses. *Chest*. 2003;123:1441-9.
- Calverley PM, Burge PS, Spencer S, Anderson JA, Jones PW. Bronchodilator reversibility testing in chronic obstructive pulmonary disease. *Thorax*. 2003;58:659-64.
- Annesi-Maesano I. Epidemiology of chronic obstructive pulmonary disease. *Manage Chron Obstruct Pulmon Dis*. 2006;38:41-70.
- Hanania NA, Sharafkhaneh A, Celli B, Decramer M, Lystig T, Kesten S, et al. Acute bronchodilator responsiveness and health outcomes in COPD patients in the UPLIFT trial. *Respir Res*. 2011;12:6.
- Boezen HM, Schouten JP, Postma DS, Rijcken B. Distribution of peak expiratory flow variability by age, gender and smoking habits in a random population sample aged 20-70 yrs. *Eur Respir J*. 1994;7:1814-20.
- Reddel HK, Marks GB, Jenkins CR. When can personal best peak flow be determined for asthma action plans? *Thorax*. 2004;59:922-4.
- Gibson PG. Monitoring the patient with asthma: an evidence-based approach. *J Allergy Clin Immunol*. 2000;106:17-26.
- Crapo RO, Casaburi R, Coates AL, Enright PL, Hankinson JL, Irvin CG, et al. Guidelines for methacholine and exercise challenge testing-1999. This official statement of the American Thoracic Society was adopted by the ATS Board of Directors, July 1999. *Am J Respir Crit Care Med*. 2000;161:309-29.
- Cockcroft DW, Ruffin RE, Dolovich J, Hargreave FE. Allergen-induced increase in non-allergic bronchial reactivity. *Clin Allergy*. 1977;7:503-13.
- Paoletti P, Carrozzi L, Viegi G, Modena P, Ballerín L, Di Pede F, et al. Distribution of bronchial responsiveness in a general population: effect of sex, age, smoking, and level of pulmonary function. *Am J Respir Crit Care Med*. 1995;151:1770-7.
- Laprise C, Laviolette M, Boutet M, Boulet LP. Asymptomatic airway hyperresponsiveness: relationships with airway inflammation and remodelling. *Eur Respir J*. 1999;14:63-73.
- Shore SA, Huk O, Mannix S, Martin JG. Effect of panting frequency on the plethysmographic determination of thoracic gas volume in chronic obstructive pulmonary disease. *Am Rev Respir Dis*. 1983;128:54-9.
- Swanney MP, Beckert LE, Frampton CM, Wallace LA, Jensen RL, Crapo RO. Validity of the American Thoracic Society and other spirometric algorithms using FVC and forced expiratory volume at 6 s for predicting a reduced total lung capacity. *Chest*. 2004;126:1861-6.
- Dykstra BJ, Scanlon PD, Kester MM, Beck KC, Enright PL. Lung volumes in 4,774 patients with obstructive lung disease. *Chest*. 1999;115:68-74.
- Ries AL. Measurement of lung volumes. *Clin Chest Med*. 1989;10:177-86.
- Clausen JL. The diagnosis of emphysema, chronic bronchitis, and asthma. *Clin Chest Med*. 1990;11:405-16.
- Fishman A, Martinez F, Naunheim K, Piantadosi S, Wise R, Ries A, et al. A randomized trial comparing lung-volume-reduction surgery with medical therapy for severe emphysema. *N Engl J Med*. 2003;348:2059-73.
- Glady CA, Aaron SD, Lunau M, Clinch J, Dales RE. A spirometry-based algorithm to direct lung function testing in the pulmonary function laboratory. *Chest*. 2003;123:1939-46.
- Goldman MD, Smith HJ, Ulmer WT. Whole-body plethysmography. In: Goselink R, Stam H, editors. Lung function testing. Sheffield: European Respiratory Society; 2005. p. 15-42.
- Bruschi C, Cerveri I, Zoia MC, Fanfulla F, Fiorentini M, Casali L, et al. Reference values of maximal respiratory mouth pressures: a population-based study. *Am Rev Respir Dis*. 1992;146:790-3.
- Enright PL, Kronmal RA, Manolio TA, Schenker MB, Hyatt RE. Respiratory muscle strength in the elderly. Correlates and reference values. Cardiovascular Health Study Research Group. *Am J Respir Crit Care Med*. 1994;149:430-8.

44. Kiakouama L, Cottin V, Glerant JC, Bayle JY, Mornex JF, Cordier JF. Conditions associated with severe carbon monoxide diffusion coefficient reduction. *Respir Med.* 2011;105:1248–56.
45. Horn M, Ries A, Neveu C, Moser K. Restrictive ventilatory pattern in precapillary pulmonary hypertension. *Am Rev Respir Dis.* 1983;128:163–5.
46. McLean A, Warren PM, Gillooly M, MacNee W, Lamb D. Microscopic and macroscopic measurements of emphysema: relation to carbon monoxide gas transfer. *Thorax.* 1992;47:144–9.
47. Kitaichi M, Nishimura K, Itoh H, Izumi T. Pulmonary lymphangioleiomyomatosis: a report of 46 patients including a clinic–pathologic study of prognostic factors. *Am J Respir Crit Care Med.* 1995;151:527–33.
48. Crausman RS, Jennings CA, Tudor RM, Ackerson LM, Irvin CG, King Jr TE. Pulmonary histiocytosis X: pulmonary function and exercise pathophysiology. *Am J Respir Crit Care Med.* 1996;153:426–35.
49. Collard P, Njiniou B, Nejadnik B, Keyeux A, Frans A. Single breath diffusing capacity for carbon monoxide in stable asthma. *Chest.* 1994;105:1426–9.
50. Collard P, Wilputte JY, Aubert G, Rodenstein DO, Frans A. The single-breath diffusing capacity for carbon monoxide in obstructive sleep apnea and obesity. *Chest.* 1996;110:1189–93.
51. Greening AP, Hughes JM. Serial estimations of carbon monoxide diffusing capacity in intrapulmonary haemorrhage. *Clin Sci (Lond).* 1981;60:507–12.
52. Gonzalez Mangado N, Aviles Ingles MJ, Peces-Barba G, Arevalo Gonzalez M, Lahoz Navarro F. A simple method of correcting diffusing capacity for alveolar volume reduction in restrictive lung diseases. *Respiration.* 1987;52:163–70.
53. Frans A, Nemery B, Veriter C, Lacquet L, Francis C. Effect of alveolar volume on the interpretation of single breath DLCO. *Respir Med.* 1997;91:263–73.
54. Hughes JM, Pride NB. In defence of the carbon monoxide transfer coefficient K_{CO} (TL_{CO}/V_A). *Eur Respir J.* 2001;17:168–74.
55. Kanengiser LC, Rapoport DM, Epstein H, Goldring RM. Volume adjustment of mechanics and diffusion in interstitial lung disease. Lack of clinical relevance. *Chest.* 1989;96:1036–42.
56. ATS/ERS recommendations for standardized procedures for the online and offline measurement of exhaled lower respiratory nitric oxide and nasal nitric oxide, 2005. *Am J Respir Crit Care Med.* 2005;171:912–30.
57. Dweik RA, Boggs PB, Erzurum SC, Irvin CG, Leigh MW, Lundberg JO, et al. An official ATS clinical practice guideline: interpretation of exhaled nitric oxide levels (FENO) for clinical applications. *Am J Respir Crit Care Med.* 2011;184:602–15.
58. ATS statement: guidelines for the six-minute walk test. *Am J Respir Crit Care Med.* 2002;166:111–7.
59. Enright PL. The six-minute walk test. *Respir Care.* 2003;48:783–5.
60. Swigris JJ, Wamboldt FS, Behr J, Du Bois RM, King TE, Raghu G, et al. The 6 minute walk in idiopathic pulmonary fibrosis: longitudinal changes and minimum important difference. *Thorax.* 2010;65:173–7.
61. Casanova C, Celli BR, Barria P, Casas A, Cote C, De Torres JP, et al. The 6-min walk distance in healthy subjects: reference standards from seven countries. *Eur Respir J.* 2011;37:150–6.
62. Badesch DB, Abman SH, Ahearn GS, Barst RJ, McCrory DC, Simonneau G, et al. Medical therapy for pulmonary arterial hypertension: ACCP evidence-based clinical practice guidelines. *Chest.* 2004;126:35S–62S.
63. Lama VN, Flaherty KR, Toews GB, Colby TV, Travis WD, Long Q, et al. Prognostic value of desaturation during a 6-minute walk test in idiopathic interstitial pneumonia. *Am J Respir Crit Care Med.* 2003;168:1084–90.
64. Celli BR, Cote CG, Marin JM, Casanova C, Montes OM, Mendez RA, et al. The body-mass index, airflow obstruction, dyspnea, and exercise capacity index in chronic obstructive pulmonary disease. *N Engl J Med.* 2004;350:1005–12.
65. Palange P, Ward SA, Carlsen KH, Casaburi R, Gallagher CG, Gosselink R, et al. Recommendations on the use of exercise testing in clinical practice. *Eur Respir J.* 2007;29:185–209.
66. Leggett RJ, Flenley DC. Portable oxygen and exercise tolerance in patients with chronic hypoxic cor pulmonale. *Br Med J.* 1977;2:84–6.
67. Morante F, Guell R, Mayos M. Efficacy of the 6-minute walk test in evaluating ambulatory oxygen therapy. *Arch Bronconeumol.* 2005;41:596–600.
68. Ortega F, Montemayor T, Sanchez A, Cabello F, Castillo J. Role of cardiopulmonary exercise testing and the criteria used to determine disability in patients with severe chronic obstructive pulmonary disease. *Am J Respir Crit Care Med.* 1994;150:747–51.
69. Wasserman K, Hansen JE, Sue DY, Stringer WW, Whipp BJ. Clinical applications of cardiopulmonary exercise testing. In: Wasserman K, Hansen JE, Sue DY, Stringer WW, Whipp BJ, editors. Principles of exercise testing and interpretation. 4th ed. Philadelphia: Lippincott Williams & Wilkins; 2005. p. 198–214.
70. Puente-Maestu L, Villar F, Gonzalez-Casurran G, Moreno N, Martinez Y, Simon C, et al. Early and long-term validation of an algorithm assessing fitness for surgery in patients with postoperative FEV and diffusing capacity of the lung for carbon monoxide <40%. *Chest.* 2011;139:1430–8.
71. ATS/ACCP statement on cardiopulmonary exercise testing. *Am J Respir Crit Care Med.* 2003;167:211–77.
72. Cote CG, Pinto-Plata VM, Marin JM, Nekach H, Dordelly LJ, Celli BR. The modified BODE index: validation with mortality in COPD. *Eur Respir J.* 2008;32:1269–74.
73. Wensel R, Opitz CF, Anker SD, Winkler J, Hoffken G, Kleber FX, et al. Assessment of survival in patients with primary pulmonary hypertension: importance of cardiopulmonary exercise testing. *Circulation.* 2002;106:319–24.
74. Myers J, Prakash M, Froelicher V, Do D, Partington S, Atwood JE. Exercise capacity and mortality among men referred for exercise testing. *N Engl J Med.* 2002;346:793–801.
75. Tojo N, Ichioka M, Chida M, Miyazato I, Yoshizawa Y, Miyasaka N. Pulmonary exercise testing predicts prognosis in patients with chronic obstructive pulmonary disease. *Intern Med.* 2005;44:20–5.
76. Irwin RS, Baumann MH, Bolser DC, Boulet LP, Braman SS, Brightling CE, et al. Diagnosis and management of cough executive summary: ACCP evidence-based clinical practice guidelines. *Chest.* 2006;129:1S–23S.
77. Kastelik JA, Aziz I, Ojoo JC, Thompson RH, Redington AE, Morice AH. Investigation and management of chronic cough using a probability-based algorithm. *Eur Respir J.* 2005;25:235–43.
78. Vestbo J, Edwards LD, Scanlon PD, Yates JC, Agustí A, Bakke P, et al. Changes in forced expiratory volume in 1 second over time in COPD. *N Engl J Med.* 2011;365:1184–92.
79. Celli BR. Predictors of mortality in COPD. *Respir Med.* 2010;104:773–9.
80. Scanlon PD, Connett JE, Waller LA, Altose MD, Bailey WC, Buist AS. Smoking cessation and lung function in mild-to-moderate chronic obstructive pulmonary disease. The Lung Health Study. *Am J Respir Crit Care Med.* 2000;161:381–90.
81. Donaldson GC, Seemungal TA, Bhowmik A, Wedzicha JA. Relationship between exacerbation frequency and lung function decline in chronic obstructive pulmonary disease. *Thorax.* 2002;57:847–52.
82. Kanner RE, Anthonisen NR, Connett JE. Lower respiratory illnesses promote FEV(1) decline in current smokers but not ex-smokers with mild chronic obstructive pulmonary disease: results from the lung health study. *Am J Respir Crit Care Med.* 2001;164:358–64.
83. O'Donnell DE, Fluge T, Gerken F, Hamilton A, Webb K, Aguilaniu B, et al. Effects of tiotropium on lung hyperinflation, dyspnoea and exercise tolerance in COPD. *Eur Respir J.* 2004;23:832–40.
84. Raghu G, Collard KR, Egan JJ, Martinez FJ, Behr J, Brown KK, et al. An official ATS/ERS/JRS/ALAT statement: idiopathic pulmonary fibrosis: evidence-based guidelines for diagnosis and management. *Am J Respir Crit Care Med.* 2011;183:788–824.
85. McLaughlin VV, Archer SL, Badesch DB, Barst RJ, Farber HW, Lindner JR, et al. ACCF/AHA 2009 expert consensus document on pulmonary hypertension a report of the American College of Cardiology Foundation Task Force on Expert Consensus Documents and the American Heart Association developed in collaboration with the American College of Chest Physicians; American Thoracic Society, Inc.; and the Pulmonary Hypertension Association. *J Am Coll Cardiol.* 2009;53:1573–619.
86. Handa T, Nagai S, Miki S, Ueda S, Yukawa N, Fushimi Y, et al. Incidence of pulmonary hypertension and its clinical relevance in patients with interstitial pneumonias: comparison between idiopathic and collagen vascular disease associated interstitial pneumonias. *Intern Med.* 2007;46:831–7.
87. Smetana GW, Lawrence VA, Cornell JE. Preoperative pulmonary risk stratification for noncardiothoracic surgery: systematic review for the American College of Physicians. *Ann Intern Med.* 2006;144:581–95.
88. Brunelli A, Charloux A, Bolliger CT, Rocco G, Sculier JP, Varela G, et al. ERS/ESTS clinical guidelines on fitness for radical therapy in lung cancer patients (surgery and chemo-radiotherapy). *Eur Respir J.* 2009;34:17–41.