

Clinical Image

Double Aortic Arch and a Coexistent Azygos Lobe

Arco aórtico doble coexistente con un lóbulo de la vena ázigos

Guoqing Zhang^a, Hui Ma^b, Jindong Li^{a,*}

^a Department of Thoracic Surgery and Lung Transplantation, First Affiliated Hospital of Zhengzhou University, Zhengzhou 450052, Henan Province, China

^b Department of Respiratory Disease, People's Hospital of Zhengzhou, Zhengzhou, Henan Province, China

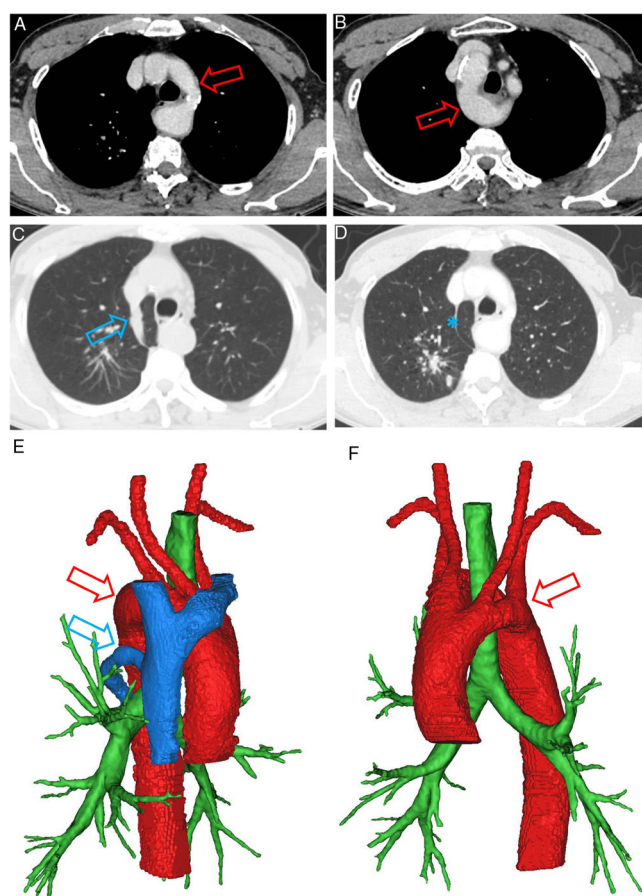


Fig. 1. Images A, B, E and F show the existence of the double aortic arch (red arrow). Images C and D show the azygos vein (blue arrow) and the azygos fissure (asterisk).

A 66-year-old man was admitted with repeated dysphagia. Gastroscopy confirmed the diagnosis of esophageal cancer. Potential metastasis was ruled out in an enhanced CT scan of chest and abdomen. However, 2 rare malformations were found: double aortic arch (DAA) and an accessory fissure of the azygos vein, as shown in Fig. 1. The DAA forms a vascular ring, which encircles trachea and esophagus. It is known to cause respiratory symptoms and dysphagia. A DAA is a rare type of congenital aortic arch anomaly, affecting approximately 0.005–0.007% of fetuses. Azygos lobe is a rare anatomic variant of right upper lobe seen in about 0.4% of population radiologically. Esophageal cancer in an adult, with DAA and a coexistent azygos lobe has not been reported. Awareness of this type of malformation is crucial in the surgical planning of esophagectomy.^{1,2}

Conflict of interest

None.

References

1. Kumar NA, Usman N, Rajan K, Gaude YK. Esophageal cancer and double aortic arch: right-sided thoracoscopic esophagectomy and reconstruction. *J Gastrointest Cancer*. 2021;52(March):355–8.
2. Fujiwara H, Sato T, Okada N, Fujita T, Kojima T, Daiko H. Thoracoscopic esophagectomy with three-field lymphadenectomy for thoracic esophageal cancer in a patient with a double aortic arch: a report of a case. *Surg Case Rep*. 2019;5(May):80.

* Corresponding author.
E-mail address: 13598820589@163.com (J. Li).