

Original Article

Telerehabilitation Programme as a Maintenance Strategy for COPD Patients: A 12-Month Randomized Clinical Trial



Juan B. Galdiz^{a,*}, Alba Gómez^b, Diego Rodríguez^c, Rosa Guell^d, Pilar Cebollero^e, Javier Hueto^e, Pilar Cejudo^f, Francisco Ortega^g, Itxaso Sayago^h, Susana Chicⁱ, Marta Iscar^j, Carlos Amado^k, Gemma Rodríguez Trigo^l, Borja G. Cosío^m, Víctor Bustamanteⁿ, José Ignacio Pijoan^o

^a Respiratory Department, Hospital Universitario Cruces, Osakidetza, Biocruces Bizkaia Health Research Institute, CibeRes, Barakaldo, Spain

^b Unitat Rehabilitació Cardio-Respiratoria, Hospital Universitari Vall d'Hebron, Barcelona, Spain

^c Respiratory Department, Hospital del Mar, CibeRes, Barcelona, Spain

^d Respiratory Department, Hospital de la Santa Creu i San Pau, CibeRes, Barcelona, Spain

^e Respiratory Department, Complejo Hospitalario Navarra, Pamplona, Spain

^f Instituto de Biomedicina de Sevilla, Unidad Médico-Quirúrgica de Enfermedades Respiratorias, Hospital Virgen Rocío, Sevilla, Spain

^g Instituto de Biomedicina de Sevilla, Unidad Médico-Quirúrgica de Enfermedades Respiratorias, Hospital Virgen Rocío, CibeRes, Sevilla, Spain

^h Respiratory Department, Clínica Asunción, Tolosa, Gipuzkoa, Spain

ⁱ Internal Medicine Department (Respiratory Unit), Hospital de Mendara, Osakidetza, Mendara, Gipuzkoa, Spain

^j Respiratory Department, Hospital General de Asturias, Oviedo, Spain

^k Respiratory Department, Hospital Universitario Marqués de Valdecilla, Santander, Spain

^l Respiratory Department, Hospital Álvaro Cunqueiro, Vigo, Spain

^m Respiratory Department, Hospital Universitario Son Espases, Palma de Mallorca, CibeRes, Spain

ⁿ Respiratory Department, Hospital Universitario Basurto, Bilbao, Spain

^o Clinical Epidemiology Unit, Hospital Universitario de Cruces, Biocruces Bizkaia, Health Research Institute, Bilbao, Spain

ARTICLE INFO

Article history:

Received 17 February 2020

Accepted 25 March 2020

Available online 19 May 2020

Keywords:

Chronic obstructive pulmonary disease

Telerehabilitation Programme

Maintenance

ABSTRACT

Background: There is uncertainty regarding efficacy of telehealth-based approaches in COPD patients for sustaining benefits achieved with intensive pulmonary rehabilitation (PR).

Research question: To determine whether a maintenance pulmonary telerehabilitation (TelePR) programme, after intensive initial PR, is superior to usual care in sustaining over time benefits achieved by intensive PR.

Study design and methods: A multicentre open-label pragmatic parallel-group randomized clinical trial was conducted. Two groups were created at completion of an 8-week intensive outpatient hospital PR programme. Intervention group (IG) patients were given appropriate training equipment and instructed to perform three weekly training sessions and send performance data through an app to a web-based platform. Patients in the control group (CG) were advised to exercise regularly (usual care).

Results: Ninety-four patients (46 IG, 48 CG) were randomized. The analysis of covariance showed non-significant improvements in 6-min walk distance [19.9 m (95% CI -4.1/+43.8)] and Chronic Respiratory Disease Questionnaire – Emotion score [0.4 points (0–0.8)] in the IG. Secondary linear mixed models showed improvements in the IG in Short Form-36 mental component summary [9.7, (4.0–15.4)] and Chronic Respiratory Disease Questionnaire – Emotion [0.5, (0.2–0.9)] scores, but there was no association between compliance and outcomes. Acute exacerbations were associated with a marginally significant decrease in 6-minute walk distance of 15.8 m (-32.3/0.8) in linear models.

Conclusions: The TelePR maintenance strategy was both feasible and safe but failed to show superiority over usual care, despite improvements in some HRQoL domains. Acute exacerbations may have an important negative influence on long-term physical function.

ClinicalTrials.gov identifier: NCT03247933.

© 2020 SEPAR. Published by Elsevier España, S.L.U. All rights reserved.

Abbreviations: ANCOVa, analysis of covariance; BODE, body mass index airflow obstruction dyspnoea and exercise capacity index score; COPD, chronic obstructive pulmonary disease; CG, control group; CRQ, chronic respiratory disease questionnaire; HRQoL, health-related quality of life; IG, intervention group; PR, pulmonary rehabilitation; SF-36, short form 36 health survey questionnaire; TelePR, pulmonary telerehabilitation; 6MWT, six-minute walking test.

* Corresponding author.

E-mail address: med001901@hotmail.com (J.B. Galdiz).

<https://doi.org/10.1016/j.arbres.2020.03.034>

0300-2896/© 2020 SEPAR. Published by Elsevier España, S.L.U. All rights reserved.

Programa de telerrehabilitación como estrategia de mantenimiento para pacientes con EPOC: un ensayo clínico aleatorizado de 12 meses

R E S U M E N

Palabras clave:

Enfermedad pulmonar obstructiva crónica
Programa de telerrehabilitación
Mantenimiento

Contexto previo: Existe incertidumbre con respecto a la eficacia de los enfoques basados en telemedicina en pacientes con enfermedad pulmonar obstructiva crónica (EPOC) para mantener los beneficios logrados con la rehabilitación pulmonar (RP) intensiva.

Pregunta de investigación: Determinar si un programa de telerrehabilitación pulmonar de mantenimiento (TeleRP), después de una RP inicial intensiva, es superior a la atención habitual para mantener en el tiempo los beneficios logrados por la RP intensiva.

Diseño del estudio y métodos: Se realizó un ensayo clínico aleatorizado, pragmático, abierto, multicéntrico, de grupos paralelos. Se crearon 2 grupos al finalizar un programa de RP intensiva en régimen ambulatorio de 8 semanas de duración. A los pacientes del grupo de intervención (GI) se les proporcionó el equipo de entrenamiento apropiado y se les instruyó para realizar 3 sesiones de entrenamiento semanales y enviar los datos de rendimiento a través de una aplicación a una plataforma web. Se aconsejó a los pacientes del grupo de control (GC) que hicieran ejercicio regularmente (cuidado habitual).

Resultados: Se aleatorizaron 94 pacientes (46 GI, 48 GC). El análisis de covarianza mostró mejoras no significativas en la distancia en la prueba de marcha de 6 min (19,9 m [IC 95%: -4,1/+43,8]) y el cuestionario de enfermedad respiratoria crónica-factor emocional (0,4 puntos [0-0,8]) en el GI. Los modelos lineales mixtos secundarios mostraron mejoras en el GI en las puntuaciones de la sección mental del SF-36 (9,7 [4,0-15,4]) y el cuestionario de enfermedad respiratoria crónica-factor emocional (0,5 puntos [0,2-0,9]), pero no se demostró asociación entre el cumplimiento y los resultados. Las exacerbaciones agudas se asociaron con una disminución marginalmente significativa en la distancia en la prueba de la marcha de 6 min de 15,8 m (-32,3/0,8) en los modelos lineales.

Conclusiones: La estrategia de mantenimiento TeleRP fue viable y segura, pero no se demostró superioridad frente al cuidado habitual, a pesar de las mejoras en algunos aspectos en las valoraciones de la calidad de vida en relación con la salud. Las exacerbaciones agudas podrían tener una influencia negativa importante en la función física a largo plazo.

Identificador ClinicalTrials.gov: NCT03247933.

© 2020 SEPAR. Publicado por Elsevier España, S.L.U. Todos los derechos reservados.

Text

Chronic obstructive pulmonary disease (COPD) is the fourth leading cause of death in the world and more than 3 million people died of COPD in 2012. COPD accounts for 56% of costs attributable to respiratory diseases.¹

There is a high level of evidence that intensive pulmonary rehabilitation (PR) programmes have benefits in patients with COPD. Some studies suggest that the benefits of PR programmes last no more than 1 year with a maintenance technique and the actual effectiveness and most appropriate way of delivering maintenance programmes are still a matter of debate.^{2,3}

Telehealth has the potential to improve access to PR and support long-term exercise maintenance strategies provided remotely to people in their homes.^{4–6} A few studies have explored the feasibility and impact of using telerehabilitation approaches to deliver COPD maintenance programmes.^{7,8}

If pulmonary rehabilitation using telehealth technology (TelePR) were to be shown to be capable of maintaining benefits achieved by PR in the intensive period, then a TelePR programme should become an alternative to conventional maintenance programmes. The objective of this study was, therefore, to determine whether a maintenance TelePR carried out after an intensive initial PR programme was superior to usual care in sustaining, over time, the benefits achieved by the intensive PR.

Methods

Design, Participants and Eligibility Criteria

This was a multicentre open-label pragmatic parallel-group randomized clinical trial involving 13 hospitals and was conducted

between 2014 and 2017. Patient selection criteria were having a diagnosis of moderate-to-severe COPD (a Body mass index, Airflow obstruction, dyspnoea and Exercise capacity [BODE] index score of 3–7) according to international guidelines⁹ and having been clinically stable for the previous 4 weeks (see the online supplementary material).

The study was carried out in accordance with the principles of the Declaration of Helsinki and started after receiving authorization from the Spanish Agency for Medicines and Health Products and the approval of the Basque Country Ethics Committee, as well as the local Ethics Committee and Director at each institution. All patients gave written informed consent. ClinicalTrials.gov Identifier: NCT03247933.

Randomization

Recruited patients (recruitment visit, -1) attended an initial 8-week outpatient-based PR programme conducted in each hospital rehabilitation department. Following completion of this programme, patients were randomly allocated (baseline visit, 0) to either the TelePR programme [intervention group (IG)] or the standard, usual care programme [control group (CG)]. Allocation was stratified by centre and based on randomly permuted blocks of variable size with a 1:1 allocation ratio. Clinical epidemiology staff kept the centralized allocation lists concealed (see online supplementary material).

Interventions

Intensive PR (8 Weeks ± 4 Days) Visit (-1)

The hospital-based outpatient programme consisted of three training sessions a week which included 30 min of weight lifting

and 30 min of leg cycle ergometry along with four educational sessions which included chest physiotherapy training (see online supplementary material).

Maintenance Programmes

Patients in the IG were asked to continue at home with a similar training schedule to that completed in the hospital. They were provided with, for the 12-month follow-up period, a telerehabilitation kit (mobile phone, pulse oximeter, dumbbells and exercise bicycle) along with a user guide with detailed instructions on the use of the mobile device to deliver data collected to the web-based platform after completion of each scheduled session (see online supplementary material).

Patients in the CG received usual care, that is, they were advised to exercise regularly (at least walking for 1 hour a day) and provided with general educational material, following current clinical practice at participating sites.

Follow-up Visits

After the randomization visit, follow-up appointments were arranged for both groups at 3, 9 and 12 months. At each follow-up visit, the general health status of the patient was assessed, medical treatment was revised and optimized, educational reinforcement was provided, 6-minute walk test (6MWT) and spirometry tests were carried out and HRQoL measures were taken. Lastly, BODE scores were calculated at each follow-up visit for the IG and at baseline and 12-month visits for the CG.

Outcomes Measures

Efficacy and Safety Measures

Exercise tolerance (the ability to sustain exercise) was assessed using distance covered in the 6MWT.^{10,11} Health-related quality of life (HRQoL) was measured using a generic instrument (SF-36)¹² and the Chronic Respiratory Disease Questionnaire (CRQ).^{13,14} The assessment of HRQoL was based on their component dimensions: the physical and mental component summaries (PCS and MCS, respectively) for the SF-36 and dyspnoea, fatigue, emotion and mastery subscale scores (CRQ-D, -F, -E and -M, respectively) for the CRQ. The BODE index, a multidimensional grading system, was also used^{15,16} (see online supplementary material).

Patients were instructed to contact healthcare teams in the event of any potential adverse events (e.g. cardiovascular episodes, strains or other types of injuries, etc.) and specific questions were asked at each visit. Clinical records were also used to keep track of any exacerbation episodes, regardless of whether they led to emergency department or hospital admission or were managed by general practitioners or pulmonologists on an outpatient basis. Exacerbations were defined as episodes of increased cough, purulent mucus production and worsening of symptoms that required administration of antibiotics and/or corticosteroids (see online supplementary material).

Compliance and Adherence

A patient in the IG arm was classified as a non-complier if he/she did not perform scheduled exercises for at least 8 consecutive weeks, unless there were clear clinical reasons not to. Patients were considered non-adherent if they did not attend any 2 follow-up appointments and there was no clear clinical justification for not attending. At each visit, patients were advised to continue doing exercise and attending follow-up appointments even if they decided not to comply with the assigned maintenance exercises, supporting the intention-to-treat principle (see online supplementary material).

Statistical Analysis

Continuous variables are described using either the mean and standard deviation or the median and range, depending on the data distribution. Categorical variables are described using frequencies and percentages. The main efficacy analysis used analysis of covariance (ANCOVA) techniques to test for differences between groups in outcome variables at the 12-month visit, adjusted for baseline values. Least squares mean differences and 95% confidence intervals were calculated. Secondly, additional analyses were conducted using linear mixed models, adjusted for baseline values and including time-group interaction terms. Although *P*-values lower than .05 were a priori considered statistically significant in two-sided tests, the threshold was adjusted for multiple comparisons using the Holm method whenever a *P*-value lower than .05 was found in a main effect test (group variable or time effect). Missing values were not imputed. All patients were analyzed in the group to which they were randomized. Stata 15.1 for Windows was used for all the analyses (StataCorp. 2017. *Stata Statistical Software: Release 15*. College Station, TX: StataCorp LLC).

Sample Size

The sample size calculation was based on the effect of the intervention on exercise tolerance (6MWT distance) at 12 months as primary outcome: assuming superiority of the IG, we calculated that 70 patients (35 per group) would be required for a two-sided statistical comparison with a 5% type I error rate, to detect a clinically relevant difference of 35 m between arms with a standard deviation of 50 m and statistical power of 80%. The initial plan was to recruit 84 patients, allowing for a 20% dropout rate. This was subsequently altered, given recruitment pace and logistical capabilities. An extra 10 patients were recruited increasing the statistical power to 90%, while keeping all the other statistical considerations unchanged.

Results

Overall, 134 patients were screened and 94 were eventually randomized into two groups: 48 to the CG and 46 to the IG (Fig. 1). Eighty-one patients (41 from the IG and 40 from the CG) with data from both baseline and 12-month visits were included in the ANCOVA. All available data from the randomized patients were used in the mixed models. Baseline characteristics for all participants are described in Table 1. No adverse events related to the home-based exercises were reported.

Efficacy

ANCOVA

No statistically significant differences between groups were found for any pre-specified endpoint (Table 2). After adjustment for baseline values, IG patients were able to walk on average almost 20 m more in the 6MWT than controls (19.9 m, 95% CI [−4.1/ +43.8], *P* = .104) (Table 2). The CRQ-E score showed a difference in favour of the IG of 0.4 points (95% CI [0–0.8], *P* = .067). The analysis of the CRQ-D component showed a significant interaction between baseline score and intervention group (*P* = .023), with patients with lower baseline scores faring better in the CG, whereas the opposite was seen in patients with higher baseline scores.

Linear Mixed Analysis

The corrected overall critical *P*-value was .007. No significant deterioration was observed over the study period, with an adjusted difference of 13.0 m in 6MWT distance (95% CI −6.4/32.3; *P* = .188) in favour of the IG (Table 3) (Fig. 2). Regarding generic HRQoL, a

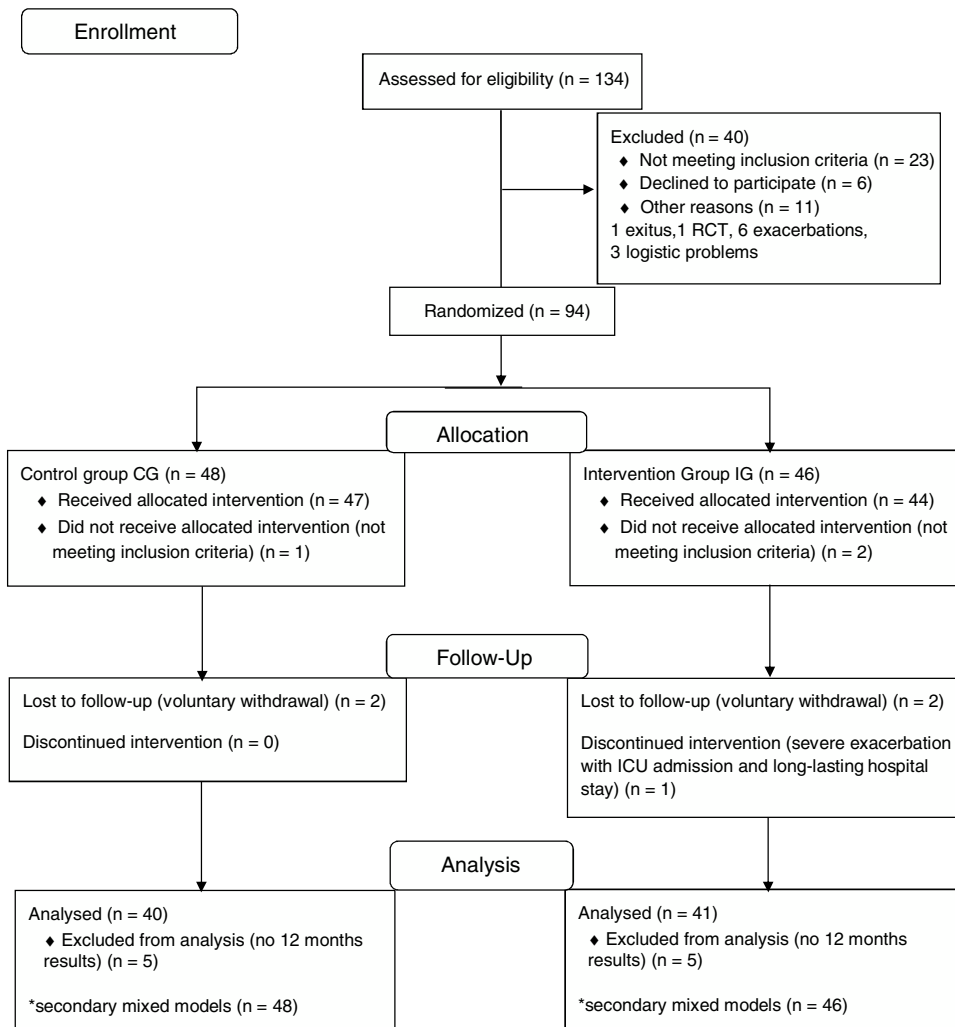


Fig. 1. CONSORT flow chart.

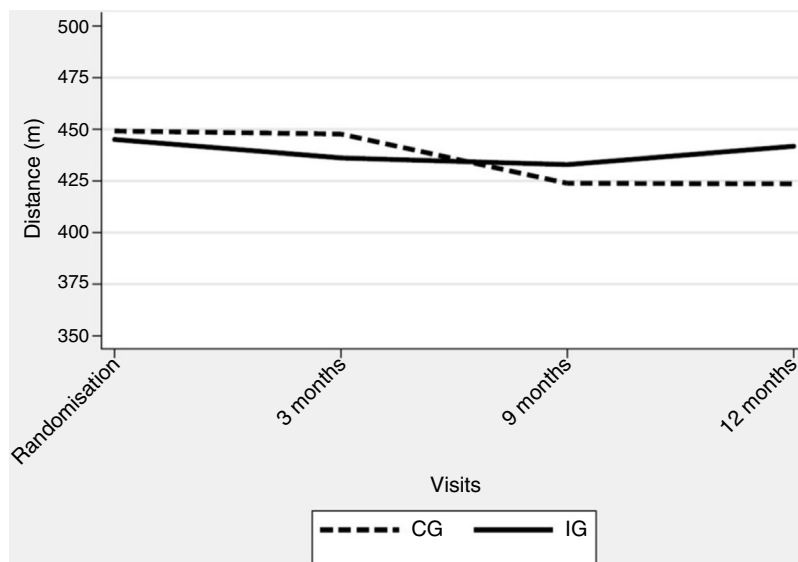


Fig. 2. Mean distance (metres) walked in the 6-min walk test by visit and treatment group (linear mixed model adjusted for randomization visit values). CG: control group; IG: intervention group.

Table 1
Characteristics of Patients at Enrolment and Randomization Visits.

Variable	CG Visit –1	CG Visit 0	IG Visit –1	IG Visit 0
Age (years)	63.0 (6.6)		62.3 (8.2)	
Sex (%)	M 68.8; F 31.2		M 65.2; F 34.8	
Height (m)	1.65 (0.09)	1.65 (0.08)	1.66 (0.08)	1.66 (0.12)
Weight (kg)	75.59 (16.89)	74.97 (15.64)	73.12 (16.00)	74.32 (17.13)
BMI (kg/m ²)	27.69 (5.05)	27.42 (4.82)	26.52 (5.17)	26.88 (5.64)
FEV1 (L)	1.28 (0.50)	1.26 (0.48)	1.14 (0.32)	1.16 (0.39)
FEV1%	42.93 (13.78)	45.87 (17.24)	42.39 (13.49)	42.09 (14.59)
FVC (L)	2.77 (0.79)	2.83 (0.74)	2.68 (0.74)	2.65 (0.70)
FVC%	74.50 (15.47)	73.38 (16.39)	73.38 (15.88)	72.82 (16.61)
FEV1/FVC	43.37 (13.43)	44.56 (11.60)	44.64 (11.97)	44.76 (12.04)
TICO %	56.97 (21.18)	62.71 (18.95)	51.22 (15.54)	55.16 (18.56)
KCO %	61.78 (20.99)	71.45 (18.52)	65.52 (20.08)	65.97 (18.82)
TLC (L)	114.64 (21.96)	110.04 (24.57)	110.45 (20.10)	111.46 (26.16)
FRC (L)	142.73 (39.12)	131.48 (37.70)	137.45 (40.07)	136.69 (44.88)
WATTS	67.05 (28.16)	78.84 (27.87)	69.52 (28.67)	76.50 (35.53)
VO ₂ (ml/kg/min)	14.63 (4.43)	16.95 (5.00)	16.85 (11.44)	15.71 (3.82)
6MWT distance (m)	426.10 (93.94)	449.17 (92.16)	437.84 (98.55)	445.07 (101.99)
pH	7.41 (0.02)	7.41 (0.03)	7.42 (0.04)	7.43 (0.04)
PaO ₂ (mm Hg)	70.45 (9.84)	73.81 (13.53)	71.06 (11.44)	70.64 (16.65)
PaCO ₂ (mm Hg)	40.18 (5.02)	40.00 (4.66)	39.37 (5.30)	39.00 (5.75)
O ₂ sat (%)	94.43 (2.45)	94.65 (2.56)	94.46 (3.65)	94.44 (2.47)
BODE index	3.80 (1.09)	3.21 (1.46)	3.96 (1.28)	3.56 (1.63)
mMRC score	2.30 (0.75)	1.78 (0.77)	2.37 (0.74)	2.00 (0.92)
CAT	17.17 (7.10)	15.87 (7.83)	16.84 (6.33)	16.02 (6.08)
GOLD	3.00 (0.72)	3.00 (0.82)	3.02 (0.77)	2.93 (0.86)
GESEPOC	2.13 (1.01)		2.31 (1.00)	
Charlson index	5.53 (11.00)		5.73 (11.55)	
SF36-PCS	48.05 (24.59)	54.03 (22.72)	46.00 (22.96)	52.02 (20.18)
SF36-MCS	68.63 (19.66)	75.43 (18.44)	65.37 (19.94)	70.98 (18.78)
CRQ-D	4.76 (1.39)	5.20 (1.41)	4.77 (1.25)	5.18 (1.21)
CRQ-F	4.27 (1.31)	4.76 (1.31)	4.23 (1.23)	4.69 (1.09)
CRQ-E	4.65 (1.29)	5.21 (1.28)	4.85 (1.24)	5.13 (1.16)
CRQ-M	4.67 (1.42)	5.29 (1.50)	4.97 (1.44)	5.22 (1.46)
BORG1-Dyspnoea	0.44 (0.94)	0.31 (0.75)	0.35 (0.77)	0.61 (1.02)
BORG1-Leg	0.96 (1.89)	0.40 (1.06)	0.43 (1.11)	0.70 (1.53)
BORG2-Dyspnoea	3.81 (2.77)	3.92 (2.65)	4.78 (2.38)	4.78 (2.65)
BORG2-Leg	2.65 (2.45)	2.43 (2.53)	2.65 (2.56)	2.85 (2.63)

Data are presented as mean (SD), unless otherwise stated. IG: intervention group; CG: control group; Visit –1 (enrolment visit) (treatment groups not yet established); Visit 0: random allocation visit; BMI: body mass index; FEV1: forced expiratory volume in 1 s; FVC: forced vital capacity; % pred: % predicted; 6MWT: 6-minute walk test; TLC: total lung capacity; FRC: functional residual capacity; TLCO%: diffusion capacity of the lung for carbon monoxide %; TLCO% (TLCO/VA)%; VO₂: Oxygen uptake; PaO₂: Arterial O₂ pressure; PaCO₂: Arterial CO₂ pressure; Sat: oxygen saturation; CAT: COPD assessment Test; GOLD: Global Initiative for Chronic Obstructive Lung Disease; Gesepoc: Guía Española de la Epoc; BODE: Body mass index, Airflow obstruction, Dyspnoea and Exercise capacity; mMRC: modified Medical Research Council Dyspnoea score; SF-36: 36-Item Short Form Health Survey; PCS: physical component score; MCS: mental component score; CRQ: Chronic Respiratory Disease Questionnaire; D: dyspnoea dimension F: fatigue dimension E: emotional function dimension M: mastery dimension; BORG1-Dyspnoea: dyspnoea perceived by the patient before bicycle exercises; BORG1-Leg: leg discomfort perceived by the patient before bicycle exercises; BORG2-Dyspnoea: dyspnoea perceived by the patient immediately after bicycle exercises; BORG2-Leg: leg discomfort perceived by the patient immediately after bicycle exercises.

significant deterioration was seen over the 12-month follow-up period in the SF-36 MCS (–0.9 points per month [$P = .003$]) but not in SF-36 PCS (–0.4 per month [$P = .039$]). Further, an adjusted significant difference of 9.7 points was found in the SF-36 MCS in favour of the IG (95% CI 4.0–15.4, $P = .001$) (Table 3).

Scores for CRQ dimensions did not change significantly over the follow-up period. Nonetheless, significantly different time trajectories (time-group interactions) were detected for the CRQ-D and CRQ-M components, with a difference of 0.5 points in the CRQ-E score in favour of the experimental arm (95% CI 0.2–0.9; $P = .002$) (Table 3) (see online supplementary material).

Adherence and Compliance

Rates of adherence to the scheduled appointments were 92.4% in the IG and 84.4% in the CG (Table 4). Four patients in each group were non-attenders according to our prespecified definition. Overall compliance in the IG was 60% of the maximum scheduled days (weekly compliance is reported in the online supplementary material). Twelve patients in the IG were classified as non-compliers.

Exacerbations

There were a total of 56 registered episodes of acute exacerbations in the IG, affecting 26 patients versus 47 in the CG affecting 21 patients, with no statistically significant differences between groups (Table 5). Including the fact that the patient had had at least one exacerbation episode as a covariate, ANCOVA indicated a relative increase in 6MWT distance of 23.2 m (–1.4/47.7) ($P = .064$) in the IG. The occurrence of exacerbation was associated with an overall decrease of 14.9 m (–39.6/9.7) ($P = .231$). Mixed models showed that IG patients were able to walk 14.9 m more (–4.2/33.9) ($P = .125$) and the occurrence of exacerbation was associated with an overall decrease of 15.8 m (–32.3/0.8) ($P = .062$).

As illustrated in Table 6, only the subgroup of patients allocated to the IG who did not experience any exacerbation episode throughout the study period improved their exercise tolerance, although the difference did not reach significance.

Exacerbations and Compliance

Table 7 shows, for the IG, the combined effect of exacerbation events and the degree of compliance on 6MWT distance, expressed in 10% increments of days with accomplished sessions over the

Table 2
Descriptive Data for Outcome Variables at Randomization (Visit 0) and Follow-up Visits.

Outcome	Descriptive Analysis								ANCOVA		
	Baseline		3 Months		9 Months		12 Months		Difference (IG-CG) (n = 77)	95% CI	P Value
	IG (n = 46)	CG (n = 48)	IG (n = 41)	CG (n = 40)	IG (n = 38)	CG (n = 32)	IG (n = 38)	CG (n = 39)			
6MWT m	445.1 (102.0)	449.2 (92.2)	436.2 (113.3)	447.7 (95.2)	432.9 (117.1)	423.9 (106.3)	441.8 (106.3)	423.7 (101.6)	19.9 mts.	(-4.1/43.8)	.104
	Baseline		3 Months		9 Months		12 Months		(n = 81)		
	IG (n = 46)	CG (n = 48)	IG (n = 42)	CG (n = 37)	IG (n = 38)	CG (n = 35)	IG (n = 41)	CG (n = 40)			
SF36 PCS	52.0 (20.2)	54.0 (22.7)	50.1 (23.8)	49.4 (24.2)	45.8 (23.8)	41.5 (22.7)	46.1 (24.0)	51.1 (24.6)	-2.2	(-9.3/4.8)	.529
SF36 MCS	71.0 (18.8)	75.4 (18.4)	73.8 (16.0)	63.8 (23.6)	70.5 (18.4)	59.4 (22.3)	68.7 (19.6)	67.0 (22.4)	4.4	(-3.4/12.2)	.262
	Baseline		3 Months		9 Months		12 Months		(n = 81)		
	IG (n = 46)	CG (n = 48)	IG (n = 43)	CG (n = 38)	IG (n = 40)	CG (n = 36)	IG (n = 41)	CG (n = 40)			
CRQ-D	5.2 (1.2)	5.2 (1.5)	5.2 (1.1)	4.7 (1.5)	4.9 (1.2)	4.8 (1.3)	4.8 (1.5)	5.0 (1.3)	**		
CRQ-F	4.7 (1.1)	4.8 (1.3)	4.7 (1.0)	4.2 (1.4)	4.5 (1.2)	4.1 (1.2)	4.5 (1.3)	4.3 (1.5)	0.3	(-0.2/0.8)	.197
CRQ-E	5.1 (1.2)	5.2 (1.3)	5.3 (1.0)	4.6 (1.4)	5.1 (1.2)	4.7 (1.3)	5.1 (1.2)	4.8 (1.3)	0.4	(0.0/0.8)	.067
CRQ-M	5.2 (1.5)	5.3 (1.5)	5.5 (1.2)	4.9 (1.5)	5.2 (1.5)	5.0 (1.5)	5.1 (1.4)	5.0 (1.5)	0.2	(-0.4/0.7)	.546
BODE	3.6 (1.6)	3.2 (1.5)	3.5 (1.7)	-	3.5 (1.7)	-	3.7 (1.8)	3.5 (1.8)	0.0	(-0.6/0.6)	.885

ANCOVA of between-group differences at 12-month visit. Data are presented as mean (SD) or mean (95% CI). ANCOVA: analysis of covariance; IG: intervention group; CG: control group; 6MWT: 6-min walk test; m.: metres; SF-36: 36-Item Short Form Health Survey; PCS: physical component score; MCS: mental component score; CRQ: Chronic Respiratory Disease Questionnaire; D: dyspnoea dimension F: fatigue dimension E: emotional function dimension M: mastery dimension; BODE: Body mass index, Airflow obstruction, dyspnoea and Exercise capacity.

** Statistically significant group-time interaction (see text).

Table 3
Longitudinal Linear Analysis of Measures at 3, 9 and 12 Months, Adjusting for Values at Randomization Visit.

Outcome	Mixed Model					
	Difference (IG-CG)	95% CI	P Value	Interaction (Group-time) P Value	Time Effect (per Month)	P Value
6MWT (m.)	13.0	(-6.4/32.3)	.188	0.276	-0.8	.211
SF36 PCS	1.6	(-4.3/7.6)	.590	0.860	-0.4	.039
SF36 MCS	9.7	(4.0-15.4)	.001	0.095	-0.9	.003
CRQ-D	**			0.023		
CRQ-F	0.3	(-0.1/0.8)	.102	0.587	0.0	.169
CRQ-E	0.5	(0.2/0.9)	.002	0.074	0.0	.478
CRQ-M	**			0.031		

IG: intervention group; CG: control group; 6MWT: 6-min walk test; m.: metres; SF-36: 36-Item Short Form Survey; MCS: mental component summary; PCS: physical component summary; CRQ: Chronic Respiratory Disease Questionnaire; D: dyspnoea dimension; F: fatigue dimension; E: emotional function dimension; M: mastery dimension.

** No point estimate of main effects is provided given the statistically significant group-time interaction (see e-Table 1 in supplementary material).

Table 4
Number of Patients Who Attended Follow-up Appointments by Group.

	Randomization	3 Months	9 Months	12 Months	% Total Scheduled
IG	46	43	40	41	92.4
CG	48	38	36	40	84.4

IG: Intervention Group; CG: Control Group.

Table 5
Number of Exacerbations per Period Between Visits.

No. Patients With ≥ 1 Exacerbation of Any Type per Period				
	0-3 Months	3-9 Months	9-12 Months	0-12 Months
IG	10	14	17	26
CG	8	13	8	21
No. Exacerbations (Any Type) per Period				
	0-3 Months	3-9 Months	9-12 Months	0-12 Months
IG	11	22	23	56
CG	12	24	11	47

Top: Number of patients that showed exacerbation (the same patient may have an exacerbation in different periods). Bottom: Total number of exacerbations per period (the same patient may have more than one exacerbation in the same period). IG: Intervention Group; CG: Control Group.

Table 6
Change Over Time in the 6-Minute Walk Test Distance in Each Group Stratified by the Presence of at Least One Exacerbation Episode.

Subgroup	Randomization		12 Months	
	n	6-MWT Distance (m.)	n	6-MWT Distance (m.)
IG (+)	26	453.4 (102.5)	24	439.9 (111.5)
IG (-)	20	434.3 (103.0)	14	445.0 (100.6)
CG (+)	21	450.5 (82.9)	16	425.9 (98.1)
CG (-)	27	448.1 (100.3)	23	422.1 (106.2)

IG (+): IG and exacerbation; IG (-): IG no exacerbation; CG (+): CG and exacerbation; CG (-): CG no exacerbation. (m.): metres; data are presented as mean (SD).

Table 7
Joint Effect of Several Variables on 6MWT Distance Walked at 12 Month Visit.

ANCOVA			
	Effect Estimate	95% CI	P Value
6MWT at randomization (m.)	1.0	(0.7-1.1)	< .001
Any exacerbation	-18.6	(-50.4/13.2)	.241
Compliance (increase in 10%)	0.1	(-0.6/0.8)	.825
Mixed Model			
	Effect Estimate	95% CI	P Value
6MWT at randomization (m.)	0.9	(0.8-1.0)	< .001
Any exacerbation	-14.6	(-35.8/6.6)	.177
Compliance (increase in 10%)	-0.1	(-0.5/0.3)	.689
Time (month of visit)	0.7	(-0.9/2.3)	.403

Top: Analysis of covariance including 6MWT distance walked at randomization (visit 0), occurrence of at least one exacerbation event and increase in compliance by 10% of scheduled training days. Bottom: Linear mixed model with the same explanatory variables and time.

total number of scheduled days. Occurrence of any exacerbation was associated with a decrease in the 6MWT of 18.6 m (95% CI –50.4/13.2; $P = .241$) in the ANCOVA model. A 10% increase in compliance rate was associated with an increase in 6MWT distance by 0.1 m (95% CI –0.6/0.8; $P = .825$). The mixed model showed similar results (Table 7).

Discussion

Our randomized study has not demonstrated the hypothesized superiority of a telerehabilitation maintenance programme over usual maintenance care in patients with moderate-to-severe COPD after an 8-week intensive hospital-based rehabilitation programme. Neither clinically meaningful nor statistically significant differences were found in the main ANCOVA-based analyses after 12 months comparing maintenance exercises following advice from a physician, in line with common local practice, with those directly monitored through the use of a web-based platform with input data provided by the patient via a mobile phone. Overall compliance with the TelePR programme was good, allowing close monitoring of the frequency and quality of maintenance exercises completed. The intervention programme was also safe, with no significant major adverse effects detected during follow-up.

Despite overall negative findings, some results are worth looking at in detail. Firstly, patients in the IG showed, on average, minimal changes over the 12-month follow-up period, with a globally more stable pattern in exercise tolerance and several HRQoL dimensions (Fig. 2 and online supplementary material). This is compatible with the view that the TelePR programme would be beneficial as a maintenance strategy at least in some patients with COPD. Specifically, we observed an average relative improvement of nearly 20 m in the 6MWT and nearly 0.5 points in several CRQ scores.

Secondly, our data, gathered in the context of a pragmatic trial, show that the selection criteria applied allowed enrolment of patients with a highly variable clinical and functional baseline status. This is reflected, for instance, in the huge variation observed in baseline 6MWT distance (range 150–650 m). This high dispersion in initial data might have hampered the ability of the trial to show potential overall benefits of the intervention.

Thirdly, our control group also had only minor deterioration in most endpoints over the course of the study. That might be due to the fact that regular visits to a specialized clinic along with reminders to keep active could also exert some positive effect. Interestingly, similar patterns were detected in several outcome variables, with early differences in favour of the IG, reaching a peak at the 9-month visit and subsequent attenuation of differences by the last (12-month) visit. Whether these time profiles are related to a short-time effect of the telerehabilitation intervention or to other factors remains unclear.

Lastly, our secondary analysis, with a linear mixed model, that makes use of all available longitudinal data, showed both clinically and statistically significant improvements in two dimensions related to quality of life (SF-36 MCS and CRQ-E) (Table 2). In addition, significantly different time profiles were detected in CRQ-D and CRQ-M, showing a relevant difference achieved at month 3 visit with progressive loss of differences at later visits (see online supplementary material).

Maintenance Strategies

Several studies have described difficulties in maintaining the benefits obtained after an intensive PR programme. Unfortunately, improvements achieved during intensive rehabilitation schedules tend to diminish over time.^{17–20} Possible contributing factors

include programme duration, intensity, location, and psychosocial factors.^{21–23} Some research has suggested that supervised post-rehabilitation exercise programmes could be effective in preserving exercise capacity.^{24,25} In a 12-month study, Spencer²⁶ did not find any difference between two groups doing once-a-week supervised outpatient-based exercise and unsupervised exercise, both maintaining the improvements obtained in the initial phase over the study duration.

Telerehabilitation

Telemedicine-based interventions promoted through phone calls, websites, or mobile phones have shown promising results in COPD patients and several studies have demonstrated the feasibility of these programmes.^{26–28,4,29} In our study, all patients were able to use the technology and it was not necessary to withdraw any patients for difficulties managing the devices provided.

Most telehealth studies reported have major methodological limitations such as a short duration, small sample sizes and high dropout rates.^{30–34} There is also a paucity of evidence on the long-term benefits of telerehabilitation interventions conducted to help maintain benefits gained during initial rehabilitation. One of the two studies found is a small non-controlled study of 10 COPD patients attending PR and followed up with a telerehabilitation programme over 2 years by Zanaboni et al.,⁷ and they concluded that exercise maintenance via telerehabilitation was feasible and effective, achieving improvements in physical performance, health status and quality of life. The other is a randomized study of the same length as ours conducted by Vasilopoulou et al.,⁸ in which 6MWT distance (a secondary endpoint) was stable in both active interventions: multimodal home-based maintenance and hospital-based maintenance rehabilitation groups, with a similar pattern to that in our TelePR group. They only found significant deterioration in exercise tolerance in their control group, which did not receive any initial intensive PR intervention.

Exacerbations and Compliance

In our study, we have also observed that the occurrence of exacerbation episodes during the maintenance period can have a major influence on exercise tolerance, to such an extent that it may even counterbalance any potential benefit of a planned regular maintenance strategy (Tables 6 and 7).

Level of compliance with the planned maintenance exercises was not a significant predictor of final physical performance in our study, either alone or after accounting for the patient having experienced at least one acute exacerbation episode (Table 7). The deleterious influence of exacerbations on functional capacity is widely acknowledged. Symptoms and physiological performance usually return to baseline pre-exacerbation levels after 7 (range 4–14) days for dyspnoea, but full recovery is not achieved in all patients even more than 1 month after the start of the acute event.²² In relation to this, our estimates of around 16 m of deterioration in 6MWT distance associated with at least one acute exacerbation episode are, to the best of our knowledge, the first data provided on the potential magnitude of this detrimental effect during a PR maintenance programme. Alahmari et al. state that having attended a PR programme in the past is associated with an attenuated short-term impact of exacerbation on exercise tolerance, but their patients were not undergoing an active maintenance intervention.³⁵

Furthermore, the only subgroup in our trial that showed some improvement in exercise tolerance at the end of the maintenance period, although not statistically significant, was that composed of IG patients without any exacerbation event during the study (Table 5). We suggest that any clinical study aimed at assessing the effects of PR maintenance programmes on physical, emotional

and HRQoL endpoints should also carefully register the occurrence, main features and clinical consequences of acute exacerbations as a way to gain deeper insight into the potential effect-modifying role played by these common intercurrent events. Frequency and/or intensity of exacerbations could also be used as an additional selection criterion for inclusion of a COPD patient on a maintenance programme or adaptation of such a programme to specific clinical characteristics.

There is little experience on the issue of whether interventions using telerehabilitation programmes have a protective effect and reduce the rate of exacerbations. A recent study⁸ reports a protective effect of a telerehabilitation programme on the number of hospital admissions due to COPD acute exacerbations. In our study, as in others,²⁶ the number of episodes of acute exacerbation was indeed higher in the IG (56 episodes versus 47 in the CG), but without statistical significance (Table 5). Although all patients were instructed to report any adverse events and medical records were systematically assessed to identify exacerbation events, it cannot be ruled out the possibility that the TelePR programme, with an accurate tally of any period of physical inactivity, could strengthen the detection and reporting of intercurrent episodes.

There is general agreement that compliance with long-term maintenance programmes is often low and decreases over time. In our study, the rate of compliance with the TelePR was 60% of the overall planned exercise days. We do not know of any other study that has given such a detailed account of the extent of accomplishment of planned exercises (see online supplementary material). If we focus on attendance to scheduled appointments, our rates are higher than those reported by most studies regardless of their design. Brooks¹⁹ in a study involving 109 patients followed over 1 year observed that 24 (22%) did not return for follow-up appointments after the baseline visit and less than half attended the last visit. Further, Spencer²⁶ reported an adherence rate of 30% at 12 months. Zanaboni⁷ observed that rates of daily card registration decreased from 42.9% to 13.9% over the 2-year study, and Guell³⁶ in a 3-year randomized trial reported adherence rates of 66% and 17% for the IG and CG respectively. In contrast, the multimodal home-based maintenance TelePR intervention by Vasilopoulou et al.⁸ showed notably high adherence rates (of over 90%) to each component of their telehealth strategy.

Limitations

The design of the study as a pragmatic trial and the correspondingly broad inclusion criteria led to recruitment of a study population with substantial clinical and functional heterogeneity which, in turn, may have diminished the likelihood of observing either clinically meaningful or statistically significant differences. Another limitation is the lack of assessment of compliance with exercise recommendations in the control group. The design of the study meant that this group were supposed to continue maintenance training according to current usual care in the recruiting hospitals. Their degree of adherence was defined according to the number of follow-up appointments attended, which is a non-specific indicator of the amount and type of maintenance exercise actually performed. It is likely that other types of compliance monitoring techniques, such as daily cards, could have given more accurate information on exercise activity in this group.

Lastly, although our rate of withdrawals and losses to follow-up is lower than that reported in most other published studies, our analysis has also had to deal with some missing data. In this regard, there was an unexpected slight increase in the number of patients attending the last appointment compared to previous ones. This phenomenon cannot be explained by the pattern of occurrence of

exacerbation events but perhaps might be the result of clinicians making intensive efforts to record functional and health status of their patients at the last study appointment.²⁶

Conclusion

We have not shown overall superiority of our TelePR maintenance strategy over our own current clinical practice. Longitudinal analyses have shown improvements in some HRQoL domains and a more stable time pattern in the IG.

Our approach to a TelePR maintenance programme is both feasible and safe and allows close monitoring of maintenance exercise. Nonetheless, we found no association between level of compliance and extent of functional maintenance in our IG.

We have identified a potentially important negative influence of exacerbations on final physical function and only patients in the intervention subgroup with no exacerbations in the study period seemed to increase their average 6MWT distance from baseline by 12 months.

Further research is warranted using more homogeneous COPD populations, considering in the design initial exercise capacity, the observed effect of the intensive PR phase and the clinical profile of the patient, especially regarding the frequency and severity of acute exacerbation episodes.

Prior Abstract Publication

Partial data have been presented as a poster (“Challenges and opportunities for independent clinical research”) at the Scientific Meeting of the Spanish Clinical Research Network (SCREn), Madrid, 9 June 2016 and as a poster discussion (“A Respiratory Telerehabilitation programme as maintenance in patients with chronic obstructive pulmonary disease”) at the European Respiratory Congress, Paris, 15–19 September 2018. We have no conflicts of interest to disclose.

Contributors

JBG and JJP conceived the study and devised the design. JJP planned and carried out the statistical analysis plan and interpreted the results. JBG and JJP drafted the manuscript. All authors critically reviewed the manuscript draft, made suggestions and approved the final version prior to submission.

Collaborators

Luis Paz del Rio, Macarena Segura, Fátima Morante, Jaime Navarro, Leire Argoitia, Juan Agüero, Elena López de Santa María, Liliana Pérez.

Disclaimer

The funders of the trial had no role in trial design, data collection, data analysis, data interpretation or writing of the report.

Patient Consent for Publication

Obtained.

Ethics Approval

Basque Country Ethics Committee (code 2014011).

Data Availability Statement

Data are available on reasonable request.

Conflict of Interest

The authors have not conflict of interest to disclose.

Acknowledgments

The authors would like to thank the participants involved in the trial, the nurses and rehabilitation personnel at each study site, and the editors of Ideas Need Communicating Language Services for their help with improving the use of English in the manuscript (supported by the Basque Foundation for Research and Innovation in Health [BIOEF]). They are also very grateful to the Spanish Clinical Research Network (SCReN) for its support, and especially to Ana Irasarri (SCReN project manager) for her gracious and tenacious backing in many aspects of the trial management.

Appendix A. Supplementary Data

Supplementary data associated with this article can be found, in the online version, at [doi:10.1016/j.arbres.2020.03.034](https://doi.org/10.1016/j.arbres.2020.03.034).

References

- Lozano R, Naghavi M, Foreman K, Lim S, Shibuya K, Aboyans V, et al. Global and regional mortality from 235 causes of death for 20 age groups in 1990 and 2010: a systematic analysis for the Global Burden of Disease Study 2010. *Lancet*. 2012;380:2095–128.
- Ries AL, Bauldoff GS, Carlin BW, Casaburi R, Emery CF, Mahler DA, et al. Pulmonary rehabilitation: joint ACCP/AACVPR evidence-based clinical practice guidelines. *Chest*. 2007;131 Suppl.:4S–25.
- Bolton CE, Bevan-Smith EF, Blakey JD, Crowe P, Elkin SL, Garrod R, et al. British Thoracic Society guideline on pulmonary rehabilitation in adults: accredited by NICE. *Thorax*. 2013;68:iii1–30.
- Brennan D, Tindall L, Theodoros D, Brown J, Campbell M, Christiana D, et al. A blueprint for telerehabilitation guidelines. *Int J Telerehabil*. 2010;2:31–4.
- Selzler AM, Wald J, Sedeno M, Jourdain T, Janaudis-Ferreira T, Goldstein R, et al. Telehealth pulmonary rehabilitation: a review of the literature and an example of a nationwide initiative to improve the accessibility of pulmonary rehabilitation. *Chronic Respir Dis*. 2018;15:41–7.
- Goldstein RS, O'Hoski S. Telemedicine in COPD time to pause. *Chest*. 2014;145:945–9.
- Zanaboni P, Hoas A, Aarøen L, Hoas H, Holland AE, Oliveira CC, et al. Long-term exercise maintenance in COPD via telerehabilitation: a 2-year pilot study. *J Telemed Telecare*. 2016;22.
- Vasilopoulou M, Papaioannou AI, Kaltsakas G, Louvaris Z, Chynkiamis N, Spetsioti S, et al. Home-based maintenance tele-rehabilitation reduces the risk for acute exacerbations of COPD, hospitalisations and emergency department visits. *Eur Respir J*. 2017;49:1–13.
- Vestbo J, Hurd S, Agustí A, Vogelmeier C, Anzueto A, Barnes PJ, et al. Global strategy for the diagnosis management, and prevention of chronic obstructive pulmonary disease. *Am J Respir Crit Care Med*. 2013;187:347–65.
- ATS statement: guidelines for the six-minute walk test. *Am J Respir Crit Care Med*. 2016;193:1185. <http://dx.doi.org/10.1164/rccm.19310>.
- Puhan MA, Chandra D, Mosenifar Z, Ries A, Make B, Hansel NN, et al. The minimal important difference of exercise tests in severe COPD. *Eur Respir J*. 2011;37:784–90.
- Alonso J, Prieto L, Anto JM. The Spanish version of the SF-36 Health Survey (the SF-36 health questionnaire): an instrument for measuring clinical results. *Med Clin (Barc)*. 1995;104:771–6.
- Güell R, Casan P, Sengenís M, Morante F, Belda J, Guyatt GH. Quality of life in patients with chronic respiratory disease: the Spanish version of the Chronic Respiratory Questionnaire (CRQ). *Eur Respir J*. 1998;11:55–60.
- Redelmeier DA, Bayoumi AM, Goldstein RS. Assessing of the minimal important differences in symptom: a comparison of two techniques. *J Clin Epidemiol*. 1996;49:1215–9.
- Celli BR, Cote Claudia G, Marin JM, Casanova C, Montes de Oca M, Mendez RA, et al. The body-mass index airflow obstruction dyspnea, and exercise capacity index in chronic obstructive pulmonary disease. *N Engl J Med*. 2004;350:1005–12.
- Martinez FJ, Han MK, Andrei AC, Wise R, Murray S, Curtis JL, et al. Longitudinal change in the BODE index predicts mortality in severe emphysema. *Am J Respir Crit Care Med*. 2008;178:491–9.
- Ries AL, Kaplan RM, Myers R, Prewitt LM. Maintenance after pulmonary rehabilitation in chronic lung disease: a randomized trial. *Am J Respir Crit Care Med*. 2003;167:880–8.
- Berry MJ, Rejeski WJ, Adair NE, Ettinger WH Jr, Zaccaro DJ, Sevick MA. A randomized, controlled trial comparing long-term and short-term exercise in patients with chronic obstructive pulmonary disease. *J Cardiopulm Rehabil*. 2003;23:60–8.
- Brooks D, Krip B, Mangovski-Alzamora S, Goldstein RS. The effect of postrehabilitation programmes among individuals with chronic obstructive pulmonary disease. *Eur Respir J*. 2002;20:20–9.
- Griffiths TL, Burr ML, Campbell IA, Lewis-Jenkins V, Mullins J, Shiels K, et al. Results at 1 year of outpatient multidisciplinary pulmonary rehabilitation: a randomised controlled trial. *Lancet*. 2000;355:362–8.
- Arnold E, Bruton A, Ellis-Hill C. Adherence to pulmonary rehabilitation: a qualitative study. *Respir Med*. 2006;100:1716–23.
- Spruit MA, Singh SJ. Maintenance programs after pulmonary rehabilitation: how may we advance this field? *Chest*. 2013;144:1091–3.
- O'Shea SD, Taylor N, Paratz J. But watch out for the weather: factors affecting adherence to progressive resistance exercise for persons with COPD. *J Cardiopulm Rehabil Prev*. 2007;27:166–74.
- Beauchamp MK, Evans R, Janaudis-Ferreira T, Goldstein RS, Brooks D. Systematic review of supervised exercise programs after pulmonary rehabilitation in individuals with COPD. *Chest*. 2013;144:1124–33.
- Guell R, Casan P, Belda J, Sengenís M, Morante F, Guyatt GH, et al. Long-term effects of outpatient rehabilitation on COPD. *Chest*. 2000;117:976–83.
- Spencer LM, Alison JA, McKeough ZJ. Maintaining benefits following pulmonary rehabilitation: a randomised controlled trial. *Eur Respir J*. 2010;35:571–7.
- Holland AE, Hill CJ, Rochford P, Fiore J, Berlowitz DJ, McDonald CF. Telerehabilitation for people with chronic obstructive pulmonary disease: feasibility of a simple, real time model of supervised exercise training. *J Telemed Telecare*. 2013;19:222–6.
- Paneroni M, Colombo F, Papalia A, Colitta A, Borghi G, Saleri M, et al. Is telerehabilitation a safe and viable option for patients with COPD? A feasibility study. *COPD*. 2015;12:217–25.
- Lundell S, Holmner Å, Rehn B, Nyberg A, Wadell K. Telehealthcare in COPD: a systematic review and meta-analysis on physical outcomes and dyspnea. *Respir Med*. 2015;109:11–26.
- Marquis N, Larivée P, Saey D, Dubois MF, Tousignant M. In-home pulmonary telerehabilitation for patients with chronic obstructive pulmonary disease: a pre-experimental study on effectiveness, satisfaction, and adherence. *Telemed J E Health*. 2015;21:870–9.
- Hoas H, Andreassen HK, Lien LA, Hjalmsen A, Zanaboni P. Adherence and factors affecting satisfaction in long-term telerehabilitation for patients with chronic obstructive pulmonary disease: a mixed methods study. *BMC Med Inform and Decis Mak*. 2016;16:26.
- Marquis N, Larivée P, Dubois MF, Tousignant M. Are improvements maintained after in-home pulmonary telerehabilitation for patients with chronic obstructive pulmonary disease? *Int J Telerehabil*. 2015;6:21–30.
- Tsai LL, McNamara RJ, Moddel C, Alison JA, McKenzie DK, McKeough ZJ. Home-based telerehabilitation via real-time videoconferencing improves endurance exercise capacity in patients with COPD: the randomized controlled TeleR Study. *Respirology*. 2017;22:699–707.
- Tabak M, Vollenbroek-Hutten MM, van der Valk PD, van der Palen J, Hermens HJ. A telerehabilitation intervention for patients with chronic obstructive pulmonary disease: a randomized controlled pilot trial. *Clin Rehabil*. 2013;28:582–91.
- Alahmari A, Patel A, Kowlessar B, Mackay AJ, Singh R, Wedzicha JA, et al. Daily activity during stability and exacerbation of chronic obstructive pulmonary disease. *BMC Pulmon Med*. 2014;14:98 <http://www.biomedcentral.com/1471-2466/14/98>
- Guell MR, Cejudo P, Ortega P, Puy MC, Rodríguez-Trigo G, Pijoan JI, et al. Benefits of long-term pulmonary rehabilitation maintenance program in patients with severe chronic obstructive pulmonary disease three-year follow-up. *Am J Respir Crit Care Med*. 2017;195:622–9.