

Clinical Image

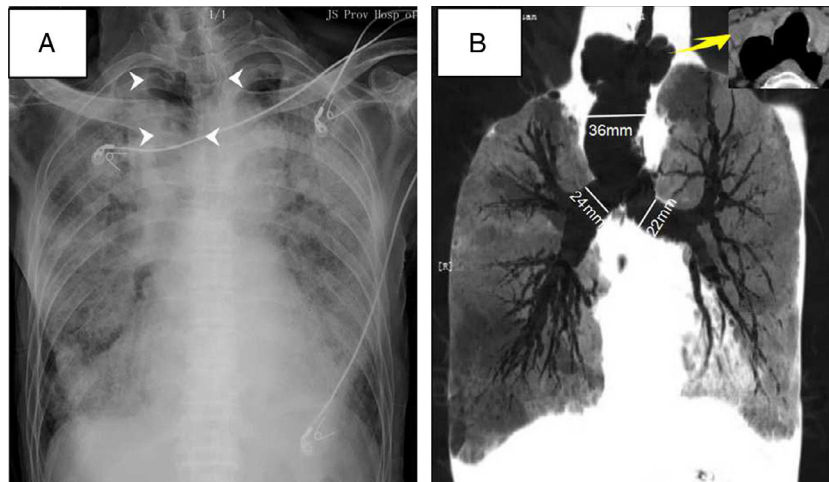
Tracheobronchomegaly in Intubated Ventilation of ARDS



Traqueobroncomegalia en intubación y ventilación mecánica en un caso de síndrome de dificultad respiratoria aguda (SDRA)

Yanxia Geng, Jiang Zhou\*, Zhimin Liu

Intensive Care Unit, Affiliated Hospital of Nanjing University of Traditional Chinese Medicine, Nanjing, China



**Fig. 1.** A) Chest X-ray at admission shows bilateral opacities and easily overlooked enlarged trachea (white arrow). B) Coronal computed tomography (CT) image showing diverticulum at proximal trachea. Diameters of distal trachea, right and left main bronchus were 36 mm, 24 mm, and 22 mm respectively.

A 79-year-old man with a history of pulmonary fibrosis and Sjogren's syndrome was admitted to ICU for management of severe ARDS (Acute Respiratory Distress Syndrome) after radical prostatectomy. He presented with respiratory distress with bilateral opacities in chest radiograph (Fig. 1A). Tracheal intubation was performed the next day. However, the tidal volume continued to be instable at about 50–200 ml even under fully sedation. A serious gas leakage was found as breath flow could be heard, which became better when head position fixed to the left. Taking back his history, he had had untreated tracheal abnormalities for decades. Chest computed tomography later showed diverticulum on both

sides at the upper part of the trachea, and marked dilated trachea at the lower portion (Fig. 1B). Dueing to the poor attachment between the cuff of the endotracheal tube and the trachea wall, recruitment maneuvers for ARDS did not go well. The patient's condition continued to deteriorate and eventually died on the 11<sup>th</sup> day at ICU. Tracheobronchomegaly is a rare disease characterized by abnormally enlarged tracheo-bronchial tree. Chest X-ray may be misleading as it is easily overlooked on radiograph (Fig. 1A). Inexplicable poor ventilation in intubated patients should take into account the possibility of anatomic abnormalities, such as tracheobronchomegaly.

\* Corresponding author.  
E-mail address: 1967chch@163.com (J. Zhou).